

NetBackup™ SAN Client and Fibre Transport Guide

UNIX, Windows, Linux

Release 10.0

VERITAS™

NetBackup™ SAN Client and Fibre Transport Guide

Last updated: 2022-02-24

Legal Notice

Copyright © 2022 Veritas Technologies LLC. All rights reserved.

Veritas, the Veritas Logo, and NetBackup are trademarks or registered trademarks of Veritas Technologies LLC or its affiliates in the U.S. and other countries. Other names may be trademarks of their respective owners.

This product may contain third-party software for which Veritas is required to provide attribution to the third party ("Third-party Programs"). Some of the Third-party Programs are available under open source or free software licenses. The License Agreement accompanying the Software does not alter any rights or obligations you may have under those open source or free software licenses. Refer to the Third-party Legal Notices document accompanying this Veritas product or available at:

<https://www.veritas.com/about/legal/license-agreements>

The product described in this document is distributed under licenses restricting its use, copying, distribution, and decompilation/reverse engineering. No part of this document may be reproduced in any form by any means without prior written authorization of Veritas Technologies LLC and its licensors, if any.

THE DOCUMENTATION IS PROVIDED "AS IS" AND ALL EXPRESS OR IMPLIED CONDITIONS, REPRESENTATIONS AND WARRANTIES, INCLUDING ANY IMPLIED WARRANTY OF MERCHANTABILITY, FITNESS FOR A PARTICULAR PURPOSE OR NON-INFRINGEMENT, ARE DISCLAIMED, EXCEPT TO THE EXTENT THAT SUCH DISCLAIMERS ARE HELD TO BE LEGALLY INVALID. Veritas Technologies LLC SHALL NOT BE LIABLE FOR INCIDENTAL OR CONSEQUENTIAL DAMAGES IN CONNECTION WITH THE FURNISHING, PERFORMANCE, OR USE OF THIS DOCUMENTATION. THE INFORMATION CONTAINED IN THIS DOCUMENTATION IS SUBJECT TO CHANGE WITHOUT NOTICE.

The Licensed Software and Documentation are deemed to be commercial computer software as defined in FAR 12.212 and subject to restricted rights as defined in FAR Section 52.227-19 "Commercial Computer Software - Restricted Rights" and DFARS 227.7202, et seq. "Commercial Computer Software and Commercial Computer Software Documentation," as applicable, and any successor regulations, whether delivered by Veritas as on premises or hosted services. Any use, modification, reproduction release, performance, display or disclosure of the Licensed Software and Documentation by the U.S. Government shall be solely in accordance with the terms of this Agreement.

Veritas Technologies LLC
2625 Augustine Drive
Santa Clara, CA 95054

<http://www.veritas.com>

Technical Support

Technical Support maintains support centers globally. All support services will be delivered in accordance with your support agreement and the then-current enterprise technical support policies. For information about our support offerings and how to contact Technical Support, visit our website:

<https://www.veritas.com/support>

You can manage your Veritas account information at the following URL:

<https://my.veritas.com>

If you have questions regarding an existing support agreement, please email the support agreement administration team for your region as follows:

Worldwide (except Japan)

CustomerCare@veritas.com

Japan

CustomerCare_Japan@veritas.com

Documentation

Make sure that you have the current version of the documentation. Each document displays the date of the last update on page 2. The latest documentation is available on the Veritas website:

<https://sort.veritas.com/documents>

Documentation feedback

Your feedback is important to us. Suggest improvements or report errors or omissions to the documentation. Include the document title, document version, chapter title, and section title of the text on which you are reporting. Send feedback to:

NB.docs@veritas.com

You can also see documentation information or ask a question on the Veritas community site:

<http://www.veritas.com/community/>

Veritas Services and Operations Readiness Tools (SORT)

Veritas Services and Operations Readiness Tools (SORT) is a website that provides information and tools to automate and simplify certain time-consuming administrative tasks. Depending on the product, SORT helps you prepare for installations and upgrades, identify risks in your datacenters, and improve operational efficiency. To see what services and tools SORT provides for your product, see the data sheet:

https://sort.veritas.com/data/support/SORT_Data_Sheet.pdf

Contents

Chapter 1	Introducing SAN Client and Fibre Transport	8
	About NetBackup SAN Client and Fibre Transport	8
	About Fibre Transport	9
	About Fibre Transport media servers	10
	About SAN clients	10
	About the Fibre Transport Service Manager	11
	About NetBackup Release Notes	11
Chapter 2	Planning your deployment	12
	Planning your SAN Client deployment	12
	SAN Client operational notes	13
	About SAN Client storage destinations	13
	About SAN Client disk storage destinations	14
	About SAN Client tape storage destinations	14
	How to choose SAN Client and Fibre Transport hosts	15
	About NetBackup SAN Client support for agents	15
	About NetBackup SAN Client support for clustering	16
	About NetBackup SAN Client support for Windows Hyper-V Server	16
	About NetBackup SAN Client unsupported restores	17
	About Fibre Transport throughput	17
	Converting a SAN media server to a SAN client	18
Chapter 3	Preparing the SAN	20
	Preparing the SAN	20
	About zoning the SAN for Fibre Transport	21
	About zoning the SAN for Fibre Transport for a 16-gigabit target mode HBA support	23
	About HBAs for SAN clients and Fibre Transport media servers	25
	About the 16-gigabit target mode HBAs for SAN clients and Fibre Transport media servers	26
	When selecting the HBA ports for SAN Client	27
	About supported SAN configurations for SAN Client	27

Chapter 4	Licensing SAN Client and Fibre Transport	29
	About SAN Client installation	29
	About the SAN Client license key	29
	When upgrading SAN Client and Fibre Transport	29
Chapter 5	Configuring SAN Client and Fibre Transport	31
	Configuring SAN Client and Fibre Transport	31
	Configuring a Fibre Transport media server	32
	About the target mode driver	33
	About nbhba mode and the ql2300_stub driver	34
	About FC attached devices	34
	How to identify the HBA ports	35
	About HBA port detection on Solaris	36
	About Fibre Transport media servers and VLANs	36
	Starting nbhba mode	37
	Marking the Fibre Transport media server HBA ports	38
	Configuring the media server Fibre Transport services	41
	Configuring the media server Fibre Transport services for a 16-gigabit target mode HBA support	44
	Displaying the FTMS state for a 16-gigabit target mode HBA support	50
	Identifying the HBA ports for a 16-gigabit target mode HBA support	51
	Configuring SAN clients	51
	About configuring firewalls for SAN clients	52
	SAN client driver requirements	52
	Configuring the SAN client Fibre Transport service	53
	Configuring SAN clients in a cluster	55
	Registering a SAN client cluster virtual name	56
	Setting NetBackup configuration options by using the command line	56
	About configuring Fibre Transport properties	58
	Configuring Fibre Transport properties	59
	Fibre Transport properties	60
	About Linux concurrent FT connections	63
	About SAN client usage preferences	64
	Configuring SAN client usage preferences	64
	SAN client usage preferences	65

Chapter 6	Managing SAN clients and Fibre Transport	67
	Enabling or disabling the Fibre Transport services	67
	Enabling or disabling the Fibre Transport services for a 16-gigabit target mode HBA support	68
	Rescanning for Fibre Transport devices from a SAN client	68
	Viewing SAN Client Fibre Transport job details	69
	Viewing Fibre Transport traffic	70
	Adding a SAN client	71
	Deleting a SAN client	71
Chapter 7	Disabling SAN Client and Fibre Transport	72
	About disabling SAN Client and Fibre Transport	72
	Disabling a SAN client	72
	Disabling a Fibre Transport media server	73
	Disabling a Fibre Transport media server for a 16-gigabit target mode HBA support	74
Chapter 8	Troubleshooting SAN Client and Fibre Transport	76
	About troubleshooting SAN Client and Fibre Transport	77
	SAN Client troubleshooting tech note	77
	Viewing Fibre Transport logs	77
	About unified logging	78
	About using the <code>vxlogview</code> command to view unified logs	79
	Examples of using <code>vxlogview</code> to view unified logs	81
	Stopping and starting Fibre Transport services	82
	Stopping and starting Fibre Transport services for a 16-gigabit target mode HBA support	83
	Backups failover to LAN even though Fibre Transport devices available	84
	Kernel warning messages when Veritas modules load	85
	SAN client service does not start	85
	SAN client Fibre Transport service validation	85
	SAN client does not select Fibre Transport	86
	Media server Fibre Transport device is offline	87
	No Fibre Transport devices discovered	88
Appendix A	AIX Specific Configuration Details	89
	AIX Reference Information	89
	Before you begin configuring NetBackup on AIX	89

About AIX persistent naming support	90
About configuring robotic control device files in AIX	90
About device files for SAN Clients on AIX	90
About configuring tape drive device files in AIX	91
About non-QIC tape drives on AIX	91
About no rewind device files on AIX	91
Creating AIX no rewind device files for tape drives	92
Appendix B HP-UX Specific Configuration Details	95
HP-UX Reference Information	95
Before you begin configuring NetBackup on HP-UX	95
About HP-UX device drivers for legacy device files	96
About legacy robotic control device files	96
About legacy tape drive device files	96
About legacy pass-through paths for tape drives	97
Creating device files for SAN Clients on HP-UX	98
About configuring legacy device files	98
Creating legacy SCSI and FCP robotic controls on HP-UX	99
About creating legacy tape drive device files	106
Creating tape drive pass-through device files	106
Index	112

Introducing SAN Client and Fibre Transport

This chapter includes the following topics:

- [About NetBackup SAN Client and Fibre Transport](#)
- [About Fibre Transport](#)
- [About Fibre Transport media servers](#)
- [About SAN clients](#)
- [About the Fibre Transport Service Manager](#)
- [About NetBackup Release Notes](#)

About NetBackup SAN Client and Fibre Transport

SAN Client is a NetBackup optional feature that provides high-speed backups and restores of NetBackup clients.

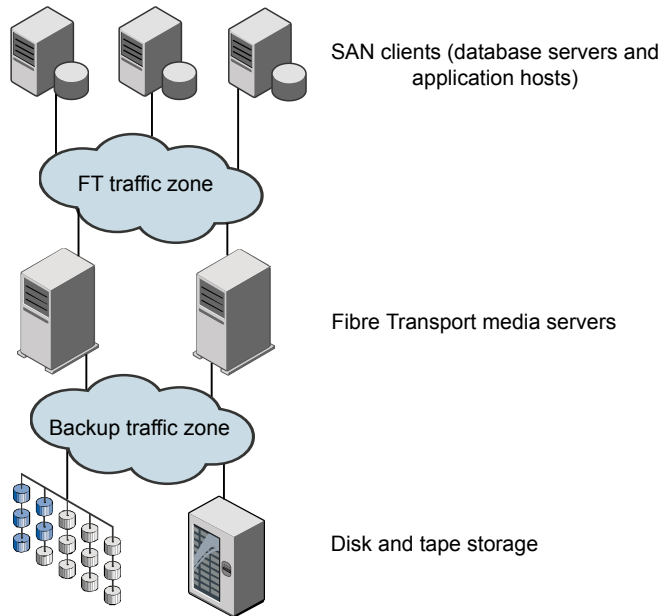
A SAN client is a special NetBackup client that can back up large amounts of data rapidly over a SAN connection rather than a LAN. For example, a database host can benefit from high-speed backups and restores. Fibre Transport is the name of the NetBackup high-speed data transport method that is part of the SAN Client feature.

The backup and restore traffic occurs over Fibre Channel (FC), and the NetBackup server and client administration traffic occurs over the LAN.

For a NetBackup 52xx or 53xx appliance, Fibre Transport also provides high-speed traffic to a NetBackup 5000 series appliance that supports Fibre Transport. The 5000 series appliance functions as the storage host for SAN client backups.

Figure 1-1 shows a SAN Client configuration.

Figure 1-1 A SAN Client configuration



About Fibre Transport

NetBackup Fibre Transport is a method of data transfer. It uses Fibre Channel and a subset of the SCSI command protocol for data movement over a SAN rather than TCP/IP over a LAN. It provides a high-performance transport mechanism between NetBackup clients and NetBackup media servers.

Fibre Transport supports multiple, concurrent logical connections. The NetBackup systems that support Fibre Transport contain Fibre Channel HBAs that are dedicated to FT communication.

The NetBackup Fibre Transport service is active on both the SAN clients and the NetBackup media servers that connect to the storage.

Throughout this documentation, Fibre Transport connections between NetBackup clients and NetBackup servers are referred to as FT pipes.

About Fibre Transport media servers

A NetBackup FT media server is a NetBackup media server on which the Fibre Transport services are activated. NetBackup FT media servers accept connections from SAN clients and send data to the disk storage.

The host bus adapters (HBAs) that accept connections from the SAN clients use a special NetBackup target mode driver to process FT traffic.

The media server FT service controls data flow, processes SCSI commands, and manages data buffers for the server side of the FT connection. It also manages the target mode driver for the host bus adaptors.

Requires a license that activates the SAN Client feature

See [“Configuring a Fibre Transport media server”](#) on page 32.

See [“Fibre Transport properties”](#) on page 60.

See [“About NetBackup SAN Client and Fibre Transport”](#) on page 8.

About SAN clients

A NetBackup SAN client is a NetBackup client on which the Fibre Transport service is activated. The SAN client is similar to the NetBackup SAN media server that is used for the Shared Storage Option; it backs up its own data. However, the SAN client is based on the smaller NetBackup client installation package, so it has fewer administration requirements and uses fewer system resources.

Usually, a SAN client contains critical data that requires high bandwidth for backups. It connects to a NetBackup media server over Fibre Channel.

The NetBackup SAN Client Fibre Transport Service manages the connectivity and the data transfers for the FT pipe on the SAN clients. The SAN client FT service also discovers FT target mode devices on the NetBackup media servers and notifies the FT Service Manager about them.

<http://www.veritas.com/docs/DOC5332>

See [“Configuring SAN clients”](#) on page 51.

See [“About configuring firewalls for SAN clients”](#) on page 52.

See [“SAN client driver requirements”](#) on page 52.

See [“Configuring the SAN client Fibre Transport service”](#) on page 53.

About the Fibre Transport Service Manager

The FT Service Manager (FSM) resides on the NetBackup server that hosts the NetBackup Enterprise Media Manager service. FSM interacts with the FT services that run on SAN clients and on FT media servers. FSM discovers, configures, and monitors FT resources and events. FSM runs in the same process as EMM.

About NetBackup Release Notes

For information about supported systems and peripherals, limitations, and operational notes, see the *NetBackup Release Notes*:

<http://www.veritas.com/docs/DOC5332>

Planning your deployment

This chapter includes the following topics:

- [Planning your SAN Client deployment](#)
- [SAN Client operational notes](#)
- [About SAN Client storage destinations](#)
- [How to choose SAN Client and Fibre Transport hosts](#)
- [About NetBackup SAN Client support for agents](#)
- [About NetBackup SAN Client support for clustering](#)
- [About NetBackup SAN Client support for Windows Hyper-V Server](#)
- [About NetBackup SAN Client unsupported restores](#)
- [About Fibre Transport throughput](#)
- [Converting a SAN media server to a SAN client](#)

Planning your SAN Client deployment

[Table 2-1](#) provides an overview of planning your deployment of SAN Client and Fibre Transport.

Table 2-1 SAN Client deployment overview

Step	Deployment task	Section
Step 1	Read about best practices and operational notes	See “SAN Client operational notes” on page 13.

Table 2-1 SAN Client deployment overview (*continued*)

Step	Deployment task	Section
Step 2	Determine the storage destination	See “About SAN Client storage destinations” on page 13.
Step 3	Determine the hosts to use	See “How to choose SAN Client and Fibre Transport hosts” on page 15.
Step 4	Prepare the SAN	See “Preparing the SAN” on page 20.
Step 5	License SAN Client	See “About the SAN Client license key” on page 29.
Step 6	Read about NetBackup agents	See “About NetBackup SAN Client support for agents” on page 15.
Step 7	Read about SAN Client and Hyper-V	See “About NetBackup SAN Client support for Windows Hyper-V Server” on page 16.
Step 8	Configure SAN Client and Fibre Transport	See “Configuring SAN Client and Fibre Transport” on page 31.
Step 9	Convert a SAN media server to a SAN Client	See “Converting a SAN media server to a SAN client” on page 18.

SAN Client operational notes

The following items describe some operational items about which you should be aware:

- The NetBackup Client Encryption Option is not supported on UNIX and Linux SAN clients.
- Data compression or encryption can degrade Fibre Transport performance for backups and restores.

If you use data compression or encryption for backups, Fibre Transport pipe performance may degrade significantly for both backups and restores. In some configurations, compression may reduce performance by up to 95% of uncompressed performance.

About SAN Client storage destinations

You can use either disk or tape as a storage destination for the SAN Client and Fibre Transport feature.

NetBackup allows the storage devices to be connected to the FT media servers by any means.

About SAN Client disk storage destinations

For disk storage, a NetBackup OpenStorage implementation provides the greatest opportunity for high performance backups and restores. Those solutions can provide enough bandwidth and read and write speed to accept the large volume of data that the NetBackup Fibre Transport mechanism provides.

NetBackup media server deduplication is an OpenStorage implementation. NetBackup client-side deduplication is not supported.

About SAN Client tape storage destinations

SAN Client can use tape as a destination storage unit. Some tape drives are fast enough to read and write the large volume of data that the NetBackup Fibre Transport mechanism provides.

With tape as a destination you can use multistreaming, which divides automatic backups for a client into multiple jobs. Because the jobs are in separate data streams, they can occur concurrently. The data streams can be sent over one or more FT pipes to the FT media server. The media server multiplexes them together onto one or more tape media volumes. For example, if you have a database server that provides multiple streams of data, you can multistream those database backups to an FT media server. The FT media server multiplexes the data streams onto the media, increasing overall performance.

You can replace NetBackup SAN Media servers with SAN clients and continue to back up to tape. A SAN Client uses fewer system resources, both disk space and processor, than a SAN Media server.

To configure multistreaming, see the *NetBackup Administrator's Guide, Volume I*: <http://www.veritas.com/docs/DOC5332>

SAN Client tape storage limitations

The following limitations exist for tape as a SAN Client storage destination:

- Only FT backups from the same client are multiplexed in a particular MPX group.
- FT backups from different clients are not multiplexed together in the same MPX group.
- You cannot multiplex different SAN clients to the same tape. Different clients can still be backed up to the same FT media server, but they are written to different tape drives in different MPX groups.

- FT and LAN backups (from the same client or different clients) are not multiplexed together in the same MPX group.
- SAN Client does not support Inline Tape Copy over Fibre Transport; Inline Tape Copy jobs occur over the LAN. The SAN Client feature is designed for very high speed backup and restore operations. Therefore, SAN Client excludes backup options (such as Inline Tape Copy) that require more resources to process and manage.

How to choose SAN Client and Fibre Transport hosts

When you choose the systems to use for NetBackup Fibre Transport, be aware of the following:

- NetBackup SAN clients cannot also be NetBackup servers. Therefore, only configure a NetBackup client to be a SAN client on systems on which only the NetBackup client software is installed.
- Do not use the NetBackup primary server as an FT media server. Data transfer consumes system resources and severely degrades NetBackup management performance.

About NetBackup SAN Client support for agents

The SAN Client feature uses shared memory for data transfer. If you use a NetBackup agent on a SAN client, the agent must have privileges to read and write from that shared memory.

Ensure that the agent has the appropriate privileges, as follows:

- On UNIX systems, install the NetBackup agent using the same user account under which NetBackup is installed.
- On Windows SAN clients, ensure that the NetBackup agent and the SAN Client Fibre Transport Service use the same account (that is, **Log On As**). The account must have **Act as a part of the operating system** privilege enabled. By default, only the **Local System** account has the **Act as a part of the operating system** privilege enabled.

SAN Client does not support the following type of agent backups:

- Microsoft SharePoint
- Enterprise Vault

- Microsoft Exchange Database Availability Group (DAG) or Cluster Continuous Replication (CCR) backups through a passive node of an Exchange cluster.

About NetBackup SAN Client support for clustering

NetBackup supports SAN Clients in an application cluster. The following are the requirements for the SAN Clients that are in an application cluster:

- SAN Client must be installed on all failover nodes in the cluster.
- The FT client service and the Veritas PBX service must run on all failover nodes.
- The host computer operating system for each SAN client on each node must detect the FT media server target mode drivers.
- The NetBackup `LOCAL_CACHE` value must be `NO` on each SAN Client. By default, the value is not specified, so you must configure the value.

Warning: Do not change the `LOCAL_CACHE` value on the FT media servers or the primary server.

See “[Configuring SAN clients in a cluster](#)” on page 55.

In the backup policy, you can use aliases or dynamic application cluster names for the references to the SAN client computers. NetBackup updates SAN client application cluster information every 5 minutes.

About NetBackup SAN Client support for Windows Hyper-V Server

NetBackup SAN Client supports backups over Fibre Transport for the Windows Hyper-V Server. Install the NetBackup client software on the Windows Hyper-V Server and then configure the SAN Client on the Hyper-V Server. Do not install the NetBackup client software or configure the SAN Client on the operating systems within the Hyper-V virtual machines.

See “[Configuring SAN clients](#)” on page 51.

For backups, follow the procedures in the *NetBackup™ for Hyper-V Administrator's Guide* to create a Hyper-V policy to back up the Hyper-V Server and its virtual machines:

<http://www.veritas.com/docs/DOC5332>

If SAN client and Fibre Transport are configured correctly, backups occur over Fibre Transport.

NetBackup does not support Fibre Transport restores to the Windows Hyper-V Server. Restores occur over the LAN.

See [“About NetBackup SAN Client unsupported restores”](#) on page 17.

About NetBackup SAN Client unsupported restores

In most cases, if a backup uses the NetBackup Fibre Transport data transfer method, a restore also occurs by the Fibre Transport method.

However, NetBackup may not support Fibre Transport restores for some NetBackup options or for other products.

NetBackup does not support Fibre Transport restores for the following options:

FlashBackup restores	SAN Client supports FlashBackup backups but restores occur over the LAN.
----------------------	--

Windows Hyper-V restores	SAN Client supports backups over Fibre Transport but restores occur over the LAN.
--------------------------	---

Depending on the options that you select when you configure the backup policy, you can restore the virtual machines and also individual files within the virtual machines.

See [“About NetBackup SAN Client support for Windows Hyper-V Server”](#) on page 16.

About Fibre Transport throughput

The slowest speed of the following components may limit the Fibre Transport throughput rate:

- The speed capability of the SAN client.
 (The speed with which the client reads and writes to the file system or database affects performance).
- The read and write speed of the storage unit.
- The bandwidth of the computer PCI I/O memory.
 On the SAN clients, a non-PCI-X card on the PCI-X bus of the HBA reduces the speed of the controlling bus. NetBackup FT performance may not be affected

as much as on a media server, but performance may degrade to unacceptable levels.

- The speed of the Fibre Channel pipe that transports the data.
- The topology of the Fibre Channel.
 Bottlenecks may occur when multiple data streams are sent through a shared element such as a trunk or an inter-switch link.

Converting a SAN media server to a SAN client

Table 2-2 provides an overview of how to convert a SAN media server to a SAN client. The computer host name remains the same. This procedure assumes that all NetBackup server run a release that supports the SAN Client feature.

Table 2-2 How to convert from a SAN media server to a SAN client

Step	Task	Instructions
Step 1	Delete the SAN media server	Do the following: <ul style="list-style-type: none"> ■ In the NetBackup Administration Console, in the left pane, select Media and Device Management > Devices > Media Servers. ■ Select the host. ■ Select Actions > Enterprise Media Manager Database > Remove Device Host.
Step 2	Uninstall the SAN media server software	See the <i>NetBackup Installation Guide for UNIX and Windows</i> : http://www.veritas.com/docs/DOC5332
Step 3	Prepare for Fibre Transport	Prepare the SAN for Fibre Transport and install the HBAs on the Fibre Transport hosts and SAN client hosts. See “ Preparing the SAN ” on page 20.
Step 4	Connect the storage to the FT media server host	Connect the SAN media server storage device to the FT media server for the new SAN client. For disk storage, mount the storage if necessary. See “ Preparing the SAN ” on page 20.

Table 2-2 How to convert from a SAN media server to a SAN client
(continued)

Step	Task	Instructions
Step 5	Install the NetBackup media server software	<p>Install the media server software on the hosts to function as Fibre Transport media servers.</p> <p>See the <i>NetBackup Installation Guide for UNIX and Windows</i>:</p> <p>http://www.veritas.com/docs/DOC5332</p>
Step 6	Configure the FT media servers	<p>See “Configuring SAN Client and Fibre Transport” on page 31.</p>
Step 7	Install the NetBackup client software	<p>Install the client software on the host that was the SAN media server.</p> <p>See the <i>NetBackup Installation Guide for UNIX and Windows</i>:</p> <p>http://www.veritas.com/docs/DOC5332</p>
Step 8	Configure the SAN client	<p>See “Configuring SAN Client and Fibre Transport” on page 31.</p>
Step 9	Configure alternate server restore	<p>Because the current host is no longer a media server, configure an alternate server restore and specify the FT media server as the Restore server. NetBackup then uses the FT media server to restore the images that were associated with the SAN media server.</p> <p>See Media host override in the General Server properties of the Primary Server Host Properties.</p> <p>After all of the images that were associated with the SAN media server expire, you can unconfigure the alternate server restore.</p>

Preparing the SAN

This chapter includes the following topics:

- [Preparing the SAN](#)
- [About zoning the SAN for Fibre Transport](#)
- [About zoning the SAN for Fibre Transport for a 16-gigabit target mode HBA support](#)
- [About HBAs for SAN clients and Fibre Transport media servers](#)
- [About the 16-gigabit target mode HBAs for SAN clients and Fibre Transport media servers](#)
- [When selecting the HBA ports for SAN Client](#)
- [About supported SAN configurations for SAN Client](#)

Preparing the SAN

[Table 3-1](#) shows the preparation steps and the order to perform them.

Table 3-1 SAN preparation overview

Step	Procedure	Section
Step 1	Zone the SAN	See “About zoning the SAN for Fibre Transport” on page 21.
Step 2	Install HBAs	See “About HBAs for SAN clients and Fibre Transport media servers” on page 25.
Step 3	Select HBA ports	See “When selecting the HBA ports for SAN Client” on page 27.

Table 3-1 SAN preparation overview (*continued*)

Step	Procedure	Section
Step 4	Connect the fiber	See “About supported SAN configurations for SAN Client” on page 27.

About zoning the SAN for Fibre Transport

Before you can configure and use the NetBackup Fibre Transport (FT) mechanism, the SAN must be configured and operational.

See [“About supported SAN configurations for SAN Client”](#) on page 27.

For SAN switched configurations, proper zoning prevents Fibre Transport traffic from using the bandwidth that may be required for other SAN activity. Proper zoning also limits the devices that the host bus adapter (HBA) ports discover; the ports should detect the other ports in their zone only. Without zoning, each HBA port detects all HBA ports from all hosts on the SAN. The potentially large number of devices may exceed the number that the operating system supports.

Instructions for how to configure and manage a SAN are beyond the scope of the NetBackup documentation. However, the following recommendations may help you optimize your SAN traffic.

[Table 3-2](#) describes the best practices for zoning the SAN on NetBackup appliances.

Table 3-2 Best practices for zoning the SAN on NetBackup appliances

Guideline	Description
One initiator per zone, multiple targets acceptable.	Veritas recommends that you create zones with only a single initiator per zone. Multiple targets in a single zone are acceptable, only if all of the targets are similar. Tape target resources should be in separate zones from disk target resources, regardless of initiator. However, both sets of resources may share the same initiator.
Be aware of performance degradation when a port is configured for multiple zones.	If you use a single port as an initiator or a target for multiple zones, this port can become a bottleneck for the overall performance of the system. You must analyze the aggregate required throughput of any part of the system and optimize the traffic flow as necessary.

Table 3-2 Best practices for zoning the SAN on NetBackup appliances
(continued)

Guideline	Description
For fault tolerance, spread connectivity across HBA cards and not ports.	To ensure the availability of system connections, if you incorporate a multi-path approach to common resources, pair ports on separate cards for like zoning. This configuration helps you avoid the loss of all paths to a resource in the event of a card failure.
Zone the SAN based on WWN to facilitate zone migrations, if devices change ports.	It is recommended that you perform SAN zoning based on WWN. If switch port configurations or cabling architectures need to change, the zoning does not have to be recreated.

[Table 3-3](#) describes the zones you should use for your SAN traffic.

Note: You must use physical port ID or World Wide Port Name (WWPN) when you specify the HBA ports on NetBackup Fibre Transport media servers.

See [“How to identify the HBA ports”](#) on page 35.

Table 3-3 Fibre Channel zones

Zone	Description
A Fibre Transport zone	<p>A Fibre Transport zone (or backup zone) should include only specific HBA ports of the hosts that use Fibre Transport, as follows:</p> <ul style="list-style-type: none"> ■ Ports on the FT media server HBAs that connect to the SAN clients. These ports use the Veritas target mode driver. See “About the target mode driver” on page 33. ■ Ports on the SAN client HBAs that connect to the media server ports that are in target mode. The ports on the SAN clients use the standard initiator mode driver. <p>You must define the FT media server target ports by physical port ID or World Wide Port Name (WWPN). The target mode driver WWPNs are not unique because they are derived from the Fibre Channel HBA WWPN.</p> <p>The NetBackup SAN clients should detect only the HBA ports that are in target mode on the NetBackup media servers. They should not detect HBA ports in initiator mode on the NetBackup media servers. They should not detect the FC HBAs on other hosts.</p> <p>To promote multistream throughput, each SAN client should detect all target mode devices of the media server HBA ports in the zone.</p>

About zoning the SAN for Fibre Transport for a 16-gigabit target mode HBA support**Table 3-3** Fibre Channel zones (*continued*)

Zone	Description
External storage zone	If the storage is on a SAN, create an external storage zone. The zone should include the HBA ports for the storage and the FT media server HBA ports that connect to the storage. All of the ports in the storage zone use the standard initiator mode HBA driver.

About zoning the SAN for Fibre Transport for a 16-gigabit target mode HBA support

Before you can configure and use the NetBackup Fibre Transport (FT) mechanism, the SAN must be configured and operational.

See [“About supported SAN configurations for SAN Client”](#) on page 27.

For SAN switched configurations, proper zoning prevents Fibre Transport traffic from using the bandwidth that may be required for other SAN activity. Proper zoning also limits the devices that the host bus adapter (HBA) ports discover; the ports should detect the other ports in their zone only. Without zoning, each HBA port detects all HBA ports from all hosts on the SAN. The potentially large number of devices may exceed the number that the operating system supports.

Instructions for how to configure and manage a SAN are beyond the scope of the NetBackup documentation. However, the following recommendations may help you optimize your SAN traffic.

[Table 3-4](#) describes the best practices for zoning the SAN on NetBackup appliances and NBU FTMS with 16Gb HBA.

Table 3-4 Best practices for zoning the SAN on NetBackup appliances

Guideline	Description
One initiator per zone, multiple targets acceptable.	Veritas recommends that you create zones with only a single initiator per zone. Multiple targets in a single zone are acceptable, only if all of the targets are similar. Tape target resources should be in separate zones from disk target resources, regardless of initiator. However, both sets of resources may share the same initiator.

Table 3-4 Best practices for zoning the SAN on NetBackup appliances
(continued)

Guideline	Description
Be aware of performance degradation when a port is configured for multiple zones.	If you use a single port as an initiator or a target for multiple zones, this port can become a bottleneck for the overall performance of the system. You must analyze the aggregate required throughput of any part of the system and optimize the traffic flow as necessary.
For fault tolerance, spread connectivity across HBA cards and not ports.	To ensure the availability of system connections, if you incorporate a multi-path approach to common resources, pair ports on separate cards for like zoning. This configuration helps you avoid the loss of all paths to a resource in the event of a card failure.
Zone the SAN based on WWN to facilitate zone migrations, if devices change ports.	It is recommended that you perform SAN zoning based on WWN. If switch port configurations or cabling architectures need to change, the zoning does not have to be recreated.

Table 3-5 describes the zones you should use for your SAN traffic.

Note: You must use physical port ID or World Wide Port Name (WWPN) when you specify the HBA ports on NetBackup Fibre Transport media servers.

See [“How to identify the HBA ports”](#) on page 35.

Table 3-5 Fibre Channel zones

Zone	Description
A Fibre Transport zone	<p>A Fibre Transport zone (or backup zone) should include only specific HBA ports of the hosts that use Fibre Transport, as follows:</p> <ul style="list-style-type: none"> ■ Ports on the FT media server HBAs that connect to the SAN clients. These ports use the Veritas target mode driver. See “About the target mode driver” on page 33. ■ Ports on the SAN client HBAs that connect to the media server ports that are in target mode. The ports on the SAN clients use the standard initiator mode driver. You must define the FT media server target ports by physical port ID or World Wide Port Name (WWPN). The target mode driver WWPNs are not unique because they are derived from the Fibre Channel HBA WWPN. The NetBackup SAN clients should detect only the HBA ports that are in target mode on the NetBackup media servers. They should not detect HBA ports in initiator mode on the NetBackup media servers. They should not detect the FC HBAs on other hosts. To promote multistream throughput, each SAN client should detect all target mode devices of the media server HBA ports in the zone.
External storage zone	<p>If the storage is on a SAN, create an external storage zone. The zone should include the HBA ports for the storage and the FT media server HBA ports that connect to the storage. All of the ports in the storage zone use the standard initiator mode HBA driver.</p>

About HBAs for SAN clients and Fibre Transport media servers

The Fibre Channel host bus adapter (HBA) and driver requirements differ on the SAN clients and on the NetBackup FT media servers, as follows:

HBAs on SAN clients

The HBAs on the SAN clients can be any supported Fibre Channel HBA. The HBA ports must operate in the default initiator mode.

For the HBAs on the SAN client systems, do the following:

- Install the drivers for the HBA.
- Install the utilities for the HBA. Although not required for NetBackup operation, the utilities may help to troubleshoot connectivity problems.

HBAs on NetBackup FT media servers

The NetBackup media servers that host Fibre Transport require the following:

- For the connections to the SAN clients, use a QLogic or Emulex HBA that NetBackup supports for Fibre Transport. For these HBAs, you must configure them to use the NetBackup target mode driver. See [“About nbhba mode and the ql2300_stub driver”](#) on page 34.
- If you use SAN attached storage, you can use any supported Fibre Channel HBA to connect to the storage. For these HBAs, you should install the QLogic driver and utilities. The HBA ports that connect to the storage must remain in the default initiator mode.
- The HBAs and their drivers must support 256K size buffers for data transfer.

For information about supported HBAs, see the Hardware Compatibility List at the following URL:

<http://www.netbackup.com/compatibility>

See [“Preparing the SAN”](#) on page 20.

About the 16-gigabit target mode HBAs for SAN clients and Fibre Transport media servers

The Fibre Channel host bus adapter (HBA) and driver requirements differ on the SAN clients and on the NetBackup FT media servers, as follows:

HBAs on SAN clients

The HBAs on the SAN clients can be any supported Fibre Channel HBA. The HBA ports must operate in the default initiator mode.

For the HBAs on the SAN client systems, do the following:

- Install the drivers for the HBA.
- Install the utilities for the HBA. Although not required for NetBackup operation, the utilities may help to troubleshoot connectivity problems.

HBA on NetBackup FT media servers

The NetBackup media servers that host Fibre Transport require the following:

- For the connections to the SAN clients, use a QLogic HBA that NetBackup supports for Fibre Transport. For these HBAs, you must configure them to use the NetBackup target mode driver.
- QLogic HBA can only be used as target. You can use Emulex HBA to work as initiators, if initiator HBA is needed.

For information about supported HBAs, see the Hardware Compatibility List at the following URL:

<http://www.netbackup.com/compatibility>

See “Preparing the SAN” on page 20.

When selecting the HBA ports for SAN Client

You must have adequate HBA ports in the FT media servers to support the FT pipes from the SAN clients. If you also use SAN attached storage, the media servers must have enough HBA ports to connect to the shared storage.

You must determine which ports to use for FT connections between the NetBackup media servers and the SAN clients, as follows:

- Determine which Fibre Channel HBAs you want to use for FT connections on the systems on which the NetBackup media servers are installed.
- Determine which Fibre Channel ports you want to use for FT connections on each SAN client.

All ports on QLogic HBAs must be either in target mode or initiator mode. You cannot connect one port on an HBA to a SAN client and another port to the storage.

About supported SAN configurations for SAN Client

NetBackup supports the following SAN configurations for Fibre Transport:

- Node port (N_Port) switched configuration Connect the NetBackup media servers and SAN clients to a SAN switch as follows:
- Connect the HBA port on the NetBackup FT media server to a Fibre Channel switch port.
 - Connect each SAN client HBA port to ports on the same Fibre Channel switch.
 - Define the zones on the switch so that the client(s) and server(s) are in the same zone. Be aware of the following:
 - You must define the NetBackup FT media server target ports by physical port ID or World Wide Port Name (WWPN). The target mode driver WWPNs are not unique because they are derived from the Fibre Channel HBA WWPN.
 - You can define SAN client ports by either port ID or WWPN. However, if you use one method only, zone definition and management is easier.

Fibre Channel arbitrated loop (FC-AL) configuration Use Fibre Channel arbitrated loop (FC-AL) to connect a NetBackup FT media server HBA port directly to a NetBackup SAN client HBA port.

Note: FC-AL hubs are not supported.

Licensing SAN Client and Fibre Transport

This chapter includes the following topics:

- [About SAN Client installation](#)
- [About the SAN Client license key](#)
- [When upgrading SAN Client and Fibre Transport](#)

About SAN Client installation

No special installation is required for the core NetBackup Fibre Transport components. However, you must activate the feature by entering a license for the feature.

See [“About the SAN Client license key”](#) on page 29.

About the SAN Client license key

On the NetBackup primary server, enter the license that activates the SAN Client feature.

If the license expires or is unavailable (such as in a disaster recovery situation), backups and restores occur over the LAN.

When upgrading SAN Client and Fibre Transport

When you upgrade NetBackup, all components are upgraded including the SAN client and Fibre Transport components.

For NetBackup upgrade installation instructions, see the *NetBackup Installation Guide for UNIX and Windows*:

<http://www.veritas.com/docs/DOC5332>

Configuring SAN Client and Fibre Transport

This chapter includes the following topics:

- [Configuring SAN Client and Fibre Transport](#)
- [Configuring a Fibre Transport media server](#)
- [Configuring SAN clients](#)
- [Configuring SAN clients in a cluster](#)
- [About configuring Fibre Transport properties](#)
- [Configuring Fibre Transport properties](#)
- [Fibre Transport properties](#)
- [About SAN client usage preferences](#)
- [Configuring SAN client usage preferences](#)

Configuring SAN Client and Fibre Transport

To configure SAN Client and Fibre Transport, you must complete multiple procedures on multiple computers.

All of the NetBackup hosts that you use for SAN Client and Fibre Transport must be provisioned with host ID-based security certificates. The hosts must be able to communicate with each other.

[Table 5-1](#) shows the configuration steps and the order to perform them.

Table 5-1 SAN Client and Fibre Transport configuration process

Step	Task	Section
Step 1	Configure the FT media servers	See “Configuring a Fibre Transport media server” on page 32.
Step 2	Configure the SAN clients	See “Configuring SAN clients” on page 51. See “Configuring SAN clients in a cluster” on page 55.
Step 3	Configure FT properties	See “About configuring Fibre Transport properties” on page 58.
Step 4	Configure SAN client usage preferences	See “SAN client usage preferences” on page 65.

Configuring a Fibre Transport media server

[Table 5-2](#) describes the process for configuring an FT media server.

Table 5-2 Process to configure an FT media server

Step	Task	Section
Step 1	Read the conceptual information about configuring an FT media server	This information that may help you avoid serious problems. See “About Linux concurrent FT connections” on page 63. See “About HBAs for SAN clients and Fibre Transport media servers” on page 25. See “About the target mode driver” on page 33. See “About nbhba mode and the ql2300_stub driver” on page 34. See “About FC attached devices” on page 34. See “How to identify the HBA ports” on page 35. See “About HBA port detection on Solaris” on page 36. See “About Fibre Transport media servers and VLANs” on page 36.
Step 2	Start nbhba mode on the media server	See “Starting nbhba mode” on page 37.
Step 3	Mark the HBA ports	See “Marking the Fibre Transport media server HBA ports” on page 38.
Step 4	Configure the FT services	See “Configuring the media server Fibre Transport services” on page 41.

Configuring a Fibre Transport media server with a 16-gigabit target mode HBA support

Table 5-3 Process to configure an FT media server with a 16-gigabit target mode HBA support

Step	Task	Section
Step 1	Read the conceptual information about configuring an FT media server	This information that may help you avoid serious problems. See “About Linux concurrent FT connections” on page 63. See “About the target mode driver” on page 33. See “About Fibre Transport media servers and VLANs” on page 36.
Step 2	Configure the FT services	See “Configuring the media server Fibre Transport services for a 16-gigabit target mode HBA support” on page 44.
Step 3	Displaying the FTMS state for a 16-gigabit target mode HBA support (Optional)	See “Displaying the FTMS state for a 16-gigabit target mode HBA support” on page 50.
Step 4	Identifying the HBA ports for a 16-gigabit target mode HBA support (Optional)	See “Identifying the HBA ports for a 16-gigabit target mode HBA support” on page 51.

About the target mode driver

On NetBackup FT media servers, QLogic or Emulex Fibre Channel host bus adapter (HBA) ports connect to the NetBackup SAN clients. Veritas provides a special *target mode driver* for the ports on those HBAs. Those ports must operate in target mode; the target mode driver replaces the default, initiator mode driver. Target mode applies only to QLogic or Emulex HBAs; the target mode configuration process affects only QLogic or Emulex HBA ports.

After the target mode driver binds to the HBA ports, those ports appear as two **ARCHIVE Python** tape devices during SCSI inquiry. However, they are not tape devices and do not appear as tape devices in NetBackup device discovery. Each port appears as two tape devices because operating systems allow only one data stream per port. Two pseudo tape devices for each port increases throughput.

See [“About Linux concurrent FT connections”](#) on page 63.

About nbhba mode and the ql2300_stub driver

The first step of the process to configure the media server HBA drivers is to start `nbhba` mode. The `nbhba` mode binds the Veritas provided `ql2300_stub` driver to all QLogic ISP2312 and ISP24xx HBA ports on the host.

The `ql2300_stub` driver prevents the standard initiator mode driver from binding to the ports. If the QLogic driver binds to the HBA ports, the NetBackup `nbhba` command cannot mark the ports that you want to operate in target mode. The target mode driver also cannot bind to the HBA ports.

The `ql2300_stub` driver also lets NetBackup read and modify the device ID in NVRAM of the QLogic ports. After you start `nbhba` mode and mark the ports of the QLogic HBAs that connect to the SAN clients, those ports operate in target mode.

The computer exits `nbhba` mode when the FT server starts.

Note: For Linux operating systems, warning messages may be displayed in the console or the system log when the `ql2300_stub` driver is loaded into the kernel.

See [“Kernel warning messages when Veritas modules load”](#) on page 85.

About FC attached devices

In `nbhba` mode, all devices that are attached to QLogic ISP2312 and ISP24xx HBA ports are unavailable. If disk or tape devices are attached to QLogic HBAs, those devices become unavailable. They remain unavailable until you exit `nbhba` mode on that computer.

Warning: Do not configure HBAs on a computer that has a start device that is attached to a QLogic ISP2312 or ISP24xx port. If you do, the computer may become unbootable. If any critical file systems are mounted on any devices that are attached to a QLogic HBA, the computer also may become unbootable. Before you begin HBA configuration, dismount any file systems that are attached to a QLogic HBA.

To determine if devices are attached to QLogic HBAs, you should examine your devices and your mounted file systems.

You can configure the QLogic HBAs on a different NetBackup media server that does not contain a QLogic HBA connected start device. Then, you can install them in the NetBackup FT media servers and configure the FT services. Afterward, you should remove the `nbhba` driver from the media server on which you configured the HBAs.

See [“Disabling a Fibre Transport media server”](#) on page 73.

The process also ends `nbhba` mode on that computer.

How to identify the HBA ports

If the computer on which you mark ports contains multiple HBAs, it may be difficult to determine how the World Wide Names (WWNs) relate to the HBAs. The NetBackup `nbhba` command that marks the HBA ports requires the port WWN. The port WWN also may be known as the World Wide Port Name (WWPN).

To avoid problems, you can install all of the QLogic HBAs in a NetBackup media server that has no other Fibre Channel HBAs installed. You can mark all HBA ports and then install the HBAs in the appropriate NetBackup media servers.

Warning: A QLogic HBA may exist as a chipset on a motherboard. To avoid problems, you should determine if the computer contains built-in QLogic ports.

If you cannot mark ports in a computer that has only the QLogic HBAs that you want to mark, the following may help:

- The HBA may identify the port WWNs on the card. Examine the HBA for the WWNs.
- The Fibre Channel switch may display WWNs for attached and operational HBA ports.
- The SAN utility software may provide the capability to list the WWNs of the HBA ports.
- On Solaris 10, you can list WWNs for native drivers by using the `fcinfo hba-port` command.
- The NetBackup `nbhba` command `-l` option lets you compare the port WWN addresses easily. (The computer must be in `nbhba` mode.) For the QLA-234x series, the port WWNs on the same card differ in the second byte and the sixth byte. The following example shows two, two-port HBAs. Lines 1 and 2 are one HBA; lines 3 and 4 are the other HBA.

```
/usr/opensv/netbackup/bin/admincmd/nbhba -l
1 2312 21:00:00:E0:8B:83:9D:A1 "QLA2342 " 0 0 101
2 2312 21:01:00:E0:8B:A3:9D:A1 "QLA2342 " 1 0 101
3 2312 21:00:00:E0:8B:8F:28:7B "QLA2342 " 0 0 101
4 2312 21:01:00:E0:8B:AF:28:7B "QLA2342 " 1 0 101
```

This output also shows that the ports are in initiator mode. The second rightmost column shows 0, and the rightmost column does not begin with 8.

- If the HBA contains LEDs on the metal mounting bracket, the color changes to green after you mark a port (yellow is initiator mode). (The computer must be in `nbhba` mode.) You can see if you marked the ports in the correct card. If you did not, you can return those ports to initiator mode and then mark other ports until you mark the correct ones.

About HBA port detection on Solaris

On systems earlier than Solaris 10 Update 7, NetBackup detects the PCI bus and allows ports on one bus only to be used for target mode.

The following is the port detection behavior on systems earlier than Solaris 10 Update 7:

- The first choice is the bus with the most 2312 target mode ports.
- If there are no 2312 target mode ports, the bus with the most 24xx target mode ports is used.
- Target mode ports on other busses are not used.

Beginning with Solaris 10 Update 7, target ports on more than one bus are supported on Solaris 10.

About Fibre Transport media servers and VLANs

For an FT media server that has multiple network interfaces for VLANs, NetBackup must recognize the primary network interface of the host before any other network interfaces for the host. Each NetBackup host recognizes other NetBackup hosts by using its **Additional Servers** list. The **Additional Servers** list appears in the **NetBackup Administration Console** host properties **Servers** page for that host.

Ensure that the FT server's primary host name appears before any other interface names for that FT media server host. Do so in the **Additional Servers** lists of the following NetBackup hosts:

- The primary server.
- The FT media server.
- All of the SAN clients that the FT media server backs up.

You may be able to use operating system commands to determine the primary interface. UNIX-type operating systems have a `hostname` command, which displays the short name of the primary interface. They also have a `domainname` command, which shows the domain name of the primary interface. On Windows, you can use the `ipconfig -all` command to display host and domain information.

See [“Backups failover to LAN even though Fibre Transport devices available”](#) on page 84.

Starting nbhba mode

Before you mark HBA ports, you must start `nbhba` mode, which binds the `ql2300_stub` driver to the QLogic HBA ports.

To start `nbhba` mode, see the following:

- [To start `nbhba` mode on Linux](#)
- [To start `nbhba` mode on Solaris](#)

You must be the root user.

To start `nbhba` mode on Linux

- 1 Ensure that the HBAs are not connected to the SAN.
- 2 Invoke the `nbftsrv_config -nbhba` command and option. The computer enters `nbhba` mode. The following is an example; output on your system may differ:

```
/usr/opensv/netbackup/bin/admincmd/nbftsrv_config -nbhba
Installing nbhba driver.
Are you sure you want to unload QLogic driver: qla2300? [y,n]
(y)
```

- 3 Answer **y** to unload the QLogic driver. The process continues as follows:

```
Removing qla2300
```

Note: For Linux operating systems, warning messages may be displayed in the console or the system log when the `ql2300_stub` driver is loaded into the kernel.

See [“Kernel warning messages when Veritas modules load”](#) on page 85.

- 4 Continue by marking the HBA ports.

See [“Marking the Fibre Transport media server HBA ports”](#) on page 38.

To start `nbhba` mode on Solaris

- 1 Ensure that the HBAs are not connected to the SAN.
- 2 Invoke the `nbftsrv_config -nbhba` command and option. The computer enters `nbhba` mode. The following is an example; output on your system may differ:

```
/usr/opensv/netbackup/bin/admincmd/nbftsrv_config -nbhba
Installing nbhba driver.
Waiting for driver references to ql2300_stub to free up (this
may take some time).
The following driver aliases need to be removed:
qlc "pci1077,2312.1077.10a"
Would you like to run update_drv to remove these now? [y,n] (y)
```

- 3 Answer **y** to remove any driver aliases. The process continues as follows:

```
/usr/sbin/update_drv -v -d -i "pci1077,2312.1077.10a" qlc
Done copying driver into system directories.
Done adding driver.
MUST REBOOT TO COMPLETE INSTALLATION.
```

- 4 Reboot the host.
- 5 Continue by marking the HBA ports.

See [“Marking the Fibre Transport media server HBA ports”](#) on page 38.

Marking the Fibre Transport media server HBA ports

You must mark the ports on the QLogic HBAs that you want to operate in target mode. The process modifies the port device IDs in NVRAM. When the FT server starts, the NetBackup target mode driver binds automatically to the QLogic HBA ports that you marked.

Before you mark ports, you must start `nbhba` mode.

See [“Starting `nbhba` mode”](#) on page 37.

The following procedures describe how to mark the HBA ports and if necessary how to reverse this process and return the ports to the initiator mode driver:

- [To mark the HBA ports](#)
- [To revert to the initiator mode driver](#)

You must be the root user to make these changes.

To mark the HBA ports

- 1 Display the QLogic HBA ports on the media server by using the `nbhba` command with the `-l` option. The following is an example; output on your system may differ:

```
/usr/opensv/netbackup/bin/admincmd/nbhba -l
1 2312 21:00:00:E0:8B:83:9D:A1 "QLA2342 " 0 0 101
2 2312 21:01:00:E0:8B:A3:9D:A1 "QLA2342 " 1 0 101
3 2312 21:00:00:E0:8B:8F:28:7B "QLA2342 " 0 0 101
4 2312 21:01:00:E0:8B:AF:28:7B "QLA2342 " 1 0 101
```

For the QLA-234x series, the port WWNs on the same card differ in the second byte and the sixth byte. This output shows two, two-port HBAs. Lines 1 and 2 are one HBA; lines 3 and 4 are the other HBA. The HBAs are in initiator mode: the second rightmost column shows 0, and the rightmost column does not begin with 8.

Alternatively, use the `nbhba -L` option to produce verbose output, which lets you identify the mode more easily.

- 2 Mark the ports by using the `nbhba` command. The following is the syntax:

```
/usr/opensv/netbackup/bin/admincmd/nbhba -modify -wwn string
-mode target
```

For example, the following two commands change the two ports on one of the HBAs from the example output in step 1:

```
nbhba -modify -wwn 21:00:00:E0:8B:8F:28:7B -mode target
nbhba -modify -wwn 21:01:00:E0:8B:AF:28:7B -mode target
```

- 3 Verify the changes by using the `nbhba` command and `-L` option to display the HBA card ports on the server. The following is an example; output on your system may differ:

```
/usr/opensv/netbackup/bin/admincmd/nbhba -L
HBA Port #1
  Device ID = 2312
  World Wide Name = 21:00:00:E0:8B:83:9D:A1
  Model Name = "QLA2342 "
  Port = 0
  Mode = initiator (designated for other use) (101)
HBA Port #2
  Device ID = 2312
  World Wide Name = 21:01:00:E0:8B:A3:9D:A1 "QLA2342
  Model Name = "QLA2342 "
  Port = 1
  Mode = initiator (designated for other use) (101)
HBA Port #3
  World Wide Name = 21:00:00:E0:8B:8F:28:7B
  Slot = ""
  Port = 0
  Fibre Not Attached
  Mode = target (designated for FT Server) (8101)
HBA Port #4
  World Wide Name = 21:01:00:E0:8B:AF:28:7B
  Slot = ""
  Port = 1
  Fibre Not Attached
  Mode = target (designated for FT Server) (8101)
```

The `nbhba -l` option also produces the output that lets you identify the mode:

```
/usr/opensv/netbackup/bin/admincmd/nbhba -l
1 2312 21:00:00:E0:8B:83:9D:A1 "QLA2342 " 0 0 101
2 2312 21:01:00:E0:8B:A3:9D:A1 "QLA2342 " 1 0 101
3 2312 21:00:00:E0:8B:8F:28:7B "QLA2342 " 0 1 8101
4 2312 21:01:00:E0:8B:AF:28:7B "QLA2342 " 1 1 8101
```

The rightmost two columns show the ports that are marked for target mode: the second rightmost column shows 1, and the rightmost column begins with 8. The other digits in the rightmost column are not significant.

- 4 If necessary, transfer the HBAs to the appropriate media servers.

5 If necessary, connect the HBAs to the SAN.

6 Continue by configuring the FT services.

See “[Configuring the media server Fibre Transport services](#)” on page 41.

To revert to the initiator mode driver

- ◆ Invoke the `nbhba` command on the NetBackup FT server in which the HBA is installed. The following is the command syntax:

```
/usr/opensv/netbackup/bin/admincmd/nbhba -modify -wwn  
world_wide_port_name -mode initiator
```

Configuring the media server Fibre Transport services

You must configure the media server FT services before you configure the SAN clients. The FT server must run on the media servers so that the client operating system discovers the target mode driver (the FT device). Two services (`nbftsrv` and `nbfdrv64`) comprise the NetBackup FT server that runs on media servers.

The `nbftsrv_config` script configures the media server for Fibre Transport. In this process, the script does the following:

- Installs the required drivers
- Installs the FT server start-up scripts
- Starts the FT server
When the FT server starts, the NetBackup target mode driver binds automatically to the QLogic HBA ports that you marked. (The default QLogic driver is bound already to the ports that are not marked.) The HBA ports operate in target mode until you configure them to use the standard initiator mode again.
- Ends the `nbhba` mode on the computer (if it was in `nbhba` mode)

Configure the FT services on every NetBackup media server that connects to SAN clients.

For procedures, see the following:

- [To configure Fibre Transport services on Linux](#)
- [To configure Fibre Transport services on Solaris](#)

You must be the root user.

To configure Fibre Transport services on Linux

- 1 Run the `nbftsrv_config` script. The following is an example; output on your system may differ:

```
/usr/opensv/netbackup/bin/admincmd/nbftsrv_config
Installing the Jungo driver and Fibre Transport Server.
The following automatic startup and shutdown scripts
(respectively) have been installed. They will cause the
NetBackup Fibre Transport Server daemon to be automatically shut
down and restarted each time the system boots.
/etc/rc.d/rc2.d/S21nbftserver
/etc/rc.d/rc3.d/S21nbftserver
/etc/rc.d/rc5.d/S21nbftserver
/etc/rc.d/rc0.d/K03nbftserver
/etc/rc.d/rc1.d/K03nbftserver
/etc/rc.d/rc6.d/K03nbftserver
It may be necessary to temporarily unload your QLogic drivers
to free up the ports for the nbhba drivers.
This is an optional step. If you choose not to do this, you may
not have access to all of the HBA ports until a subsequent
reboot.
Would you like to uninstall and reinstall your native QLogic
drivers now? [y,n] (y) y
```

- 2 The QLogic drivers must be unloaded temporarily so that the stub driver (`ql2300_stub`) can bind to the marked HBA ports during this session.

If you answer `y`, you do not have to reboot the computer during this configuration process. However, any critical devices that are attached to QLogic HBAs in the computer may be unavailable during this session. To ensure that the critical devices remain available, answer `n`. Then, you must reboot when prompted. The stub driver binds to the marked ports during the boot process, and the default QLogic drivers bind to the unmarked ports.

If you answer `n`, go to step 5.

If you answer `y`, you are prompted again to unload each QLogic driver, as follows:

```
Are you sure you want to unload QLogic driver: qla2300? [y,n]
(y) y
```

- 3** To unload the QLogic driver, answer `y`. The process continues as follows:

```
Removing qla2300
Adding qla2300.
Adding qla2xxx.
Would you like to start the SANsurfer agent (qlremote)? [y,n]
(y) y
```

- 4** If the QLogic SANsurfer agent was loaded, the configuration process asks if you want to start the agent. To start the QLogic SANsurfer agent, answer `y`. The process continues as follows:

```
Starting qlremote agent service
Started SANsurfer agent.
/etc/udev/permissions.d/50-udev.permissions updated with Jungo
WinDriver permissions.
NetBackup Fibre Transport Server started.
Would you like to make these changes persist after a reboot?
[y,n] (y) y
```

- 5** To ensure that the FT server always starts after a computer reboot, answer `y`. The process continues as follows:

```
Running mkinitrd. Previous initrd image is saved at
/boot/initrd-2.6.9-11.ELsmp.img.05-21-07.11:24:03.
```

If you answered `y` in step 2, the FT services are started, and the target mode driver binds to the marked HBA ports.

- 6** If you answered `n` in step 2, reboot the computer when prompted.

The FT services are started, and the target mode driver binds to the marked HBA ports.

To configure Fibre Transport services on Solaris

- 1 Run the `nbftsrv_config` script. The following is an example; output on your system may differ:

```
/usr/opensv/netbackup/bin/admincmd/nbftsrv_config
Installing the Jungo driver and Fibre Transport Server.
Waiting for driver references to ql2300_stub to free up (this
may take some time).
The following automatic startup and shutdown scripts
(respectively) have been installed. They will cause the
NetBackup Fibre Transport Server daemon to be automatically shut
down and restarted each time the system boots.
/etc/rc2.d/S21nbftserver
/etc/rc0.d/K03nbftserver
Adding "pci1077,2312.1077.101" to qlc.
No third party drivers found with conflicting driver aliases.
Done copying driver into system directories.
Done adding driver.MUST REBOOT TO COMPLETE INSTALLATION.
```

- 2 Reboot the host.

The FT services are started, and the target mode driver binds to the marked HBA ports.

Configuring the media server Fibre Transport services for a 16-gigabit target mode HBA support

You must configure the media server FT services before you configure the SAN clients. The FT server must run on the media servers so that the client operating system discovers the target mode driver (the FT device). One service (`nbftsvr`) comprises of the NetBackup FT server that runs on media servers.

The `nbftsrv_config` script configures the media server for Fibre Transport. In this process, the script does the following:

- Installs the required drivers
- Installs the FT server start-up scripts
- Starts the FT server

When the FT server starts, the NetBackup target mode driver binds automatically to the QLogic or Emulex HBA ports. The HBA ports operate in target mode until you disable FTMS.

Configure the FT services on every NetBackup media server that connects to SAN clients.

For procedures, see the following:

- [To configure Fibre Transport services on Linux](#)

You must be the root user.

If you plan to use Emulex LPe31002 as the target mode HBAs, ensure that the firmware version is 12.8.340.8. If not, upgrade the version to 12.8.340.8 before configuring SAN Client and Fibre Transport. For information about upgrading the firmware version, see the following technote:

https://www.veritas.com/support/en_US/article.100050295

To configure Fibre Transport services on Linux

- 1 Run the `nbftsrv_config` script. The following is an example; output on your system may differ:

```
/usr/opensv/netbackup/bin/admincmd/nbftsrv_config -scst -install
Checking for SCST drivers and firmwares in the package. [yes]
Checking if the server is not NetBackup Appliance. [yes]
Checking for kernel version 3.10.0-1160. [yes]
Checking for QLE2692 QLogic 16/32Gb HBA cards on the server. [yes]
Checking for LPe31002 Emulex 16/32Gb HBA cards on the server.
[yes]
```

DISCLAIMER:

NOTE:

1. When you install the SAN client with 16Gb HBA, the script stops the original `qla2xxx` and `lpfc` driver and updates the firmware `ql2500_fw.bin`. Only QLE2562/QLE2692 and emulex 16Gb HBA models are supported by this NetBackup version.
2. Ensure that there is no other process that uses the HBAs. If there is an active process that uses `qla2xxx` or `lpfc`, manually restart the process after the installation completes.
3. If you use the SANSurfer agent during the deployment of the environment, the script stops and restarts the SANSurfer agent daemon (`qlremote`).
4. Stop all the backup jobs that use the FT user interface.

Do you acknowledge this disclaimer? [y,n] (n) y

2 The QLogic drivers are reloaded so that the HBA ports can be detected during this session.

Proceeding to deploy SCST environment [ok]

```
Reload driver qla2xxx
Removing qla2xxx.
Successfully unloaded driver qla2xxx
Load driver qla2xxx
```

HBA-Type	Port WWN	Status	Supported Speeds
	Current Speed		
QLE2562	21:00:00:24:ff:3e:f2:e9	Online	1 Gbit, 2 Gbit, 4 Gbit, 8 Gbit
QLE2692	21:00:f4:e9:d4:53:fc:14	Online	4 Gbit, 8 Gbit, 16 Gbit
QLE2692	21:00:f4:e9:d4:53:fc:15	Linkdown	4 Gbit, 8 Gbit, 16 Gbit
LPe31002	10:00:00:10:9b:1d:4c:6a	Online	4 Gbit, 8 Gbit, 16 Gbit
LPe31002	10:00:00:10:9b:1d:4c:6b	Online	4 Gbit, 8 Gbit, 16 Gbit
QLE2562	21:00:00:24:ff:3e:f2:e8	Linkdown	1 Gbit, 2 Gbit, 4 Gbit, 8 Gbit
	unknown		

NOTE:

The types of HBA cards listed are QLE2692/QLE2562 or Emulex LPE31002. Some of the WWNs may be used to connect to an external storage and other external devices.

Do you want to continue? [y,n] (n) y

3 Enter the port numbers and make sure of the operation warnings during this session.

```

Please input the Port WWNs you want to use as the targets
(separated by commas like:
wwn1,wwn2...):10:00:00:10:9b:1d:4c:6a,10:00:00:10:9b:1d:4c:6b
The input is: 10:00:00:10:9b:1d:4c:6a,10:00:00:10:9b:1d:4c:6b
The targets you defined are Emulex HBAs
The targets you defined: 10:00:00:10:9b:1d:4c:6a
10:00:00:10:9b:1d:4c:6b
Do you want to redefine the targets? [y,n] (n) n
Do you want to add additional targets? [y,n] (n) n
The targets you defined: 10:00:00:10:9b:1d:4c:6a
10:00:00:10:9b:1d:4c:6b
The targets you have defined contain 16Gb HBA cards.

```

NOTE:

1. Make sure that you do not use a WWN that is used to connect to external storage.
 2. Make sure to define the input WWNs as targets.
 3. Make sure the WWNs can be zoned with WWNs of clients.
- Do you want to continue to setup the WWNs as targets? [y,n] (n)
y

4 The FTMS environment is deployed.

```

-----
FTMS environment installation started.
-----

Successfully created the dependent path: /var/lib/scst/pr.
Successfully created the dependent path:
/var/lib/scst/vdev_mode_pages.
Successfully copied
/usr/opensv/netbackup/bin/driver/lancerg6_A12.8.340.8.grp to
/lib/firmware/LPE31004.grp.
Successfully copied
/usr/opensv/netbackup/bin/driver/scst/ocs_fc_scst.ko.3.10.0-1160.el7.x86_64
to /lib/modules/3.10.0-1160.15.2.el7.x86_64/extra/ocs_fc_scst.ko.
Successfully copied
/usr/opensv/netbackup/bin/driver/scst/scst.ko.3.10.0-1160.el7.x86_64
to /lib/modules/3.10.0-1160.15.2.el7.x86_64/extra/scst.ko.
Successfully copied
/usr/opensv/netbackup/bin/driver/scst/scst_user.ko.3.10.0-1160.el7.x86_64
to /lib/modules/3.10.0-1160.15.2.el7.x86_64/extra/scst_user.ko.
Successfully created /etc/modprobe.d/ocs_fc_scst.conf.
Successfully copied /usr/opensv/netbackup/bin/nbftsrvr to
/usr/opensv/netbackup/bin/nbftsrvr_old.
Successfully copied
/usr/opensv/netbackup/bin/goodies/nbftserver_scst to
/etc/rc.d/init.d/nbftserver.
Successfully linked /etc/rc.d/init.d/nbftserver
/etc/rc.d/rc2.d/S21nbftserver.
Successfully linked /etc/rc.d/init.d/nbftserver
/etc/rc.d/rc3.d/S21nbftserver.
Successfully linked /etc/rc.d/init.d/nbftserver
/etc/rc.d/rc5.d/S21nbftserver.
Successfully linked /etc/rc.d/init.d/nbftserver
/etc/rc.d/rc0.d/K03nbftserver.
Successfully linked /etc/rc.d/init.d/nbftserver
/etc/rc.d/rc1.d/K03nbftserver.
Successfully linked /etc/rc.d/init.d/nbftserver
/etc/rc.d/rc6.d/K03nbftserver.
Successfully enabled nbftserver.
Successfully created /etc/modules-load.d/scst.conf.
Successfully find PCIID:0000:07:00.0 for
target:10:00:00:10:9b:1d:4c:6a
Successfully find PCIID:0000:07:00.1 for

```

```

target:10:00:00:10:9b:1d:4c:6b
Successfully bind target mode for pciid: 0000:07:00.0.
Successfully bind target mode for pciid: 0000:07:00.1.
Successfully rebind emulex target ports.
Successfully modify the attribute of
/sys/kernel/scst_tgt/targets/ocs_xe201/10:00:00:10:9b:1d:4c:6a/enabled
with value 1.
Successfully write /sys/class/fc_host/host13/issue_lip with value
1
Enable target: 10:00:00:10:9b:1d:4c:6a
Successfully modify the attribute of
/sys/kernel/scst_tgt/targets/ocs_xe201/10:00:00:10:9b:1d:4c:6b/enabled
with value 1.
Successfully write /sys/class/fc_host/host14/issue_lip with value
1
Enable target: 10:00:00:10:9b:1d:4c:6b
Previous initramfs image is saved at
/boot/initramfs-3.10.0-1160.15.2.el7.x86_64.img.03-19-21.19:31:51.
Running dracut, it may take several minutes to complete...
/sbin/dracut succeeded
Successfully moved
/boot/initramfs-3.10.0-1160.15.2.el7.x86_64.img.tmp to
/boot/initramfs-3.10.0-1160.15.2.el7.x86_64.img
NetBackup Fibre Transport Server started.
-----
Driver ocs_fc_scst is loaded
-----
Driver scst is loaded
-----
Driver scst_user is loaded

-----
FTMS environment installation completed.
-----

```

Displaying the FTMS state for a 16-gigabit target mode HBA support

The NetBackup `nbftsrv_config` command's `-scst -state` option informs you about the state of the FTMS. The computer must have enabled FTMS for a 16Gb target mode HBA support.

For example:

```
/usr/opensv/netbackup/bin/admincmd/nbftsrv_config -scst -list_port
```

```
FTMS Target Ports List:
21:00:f4:e9:d4:53:bb:c4
```

```
FTMS daemon(nbftsrvr) state:
FTMS daemon (nbftsrvr) is running.
```

The command displays the defined FTMS target ports and the state of the FTMS daemon.

Identifying the HBA ports for a 16-gigabit target mode HBA support

The NetBackup `nbftsrv_config` command's `-scst -list_port` option helps you identify the port World Wide Names (WWNs) or World Wide Port Names (WWPNs) that are defined as targets. The computer must have enabled FTMS for a 16Gb target mode HBA support.

For example:

```
/usr/opensv/netbackup/bin/admincmd/nbftsrv_config -scst -list_port
```

HBA-Type	Port WWN	Status	Current Mode	Set Mode	Supported Speeds	Current Speed
QLE2692	21:00: f4:e9:d4: 53:bb:c4	Online	Target	Target	8 Gbit, 16 Gbit	16 Gbit

Note: The types of HBA cards that get listed are QLE2692 and QLE2562 of QLogic HBA, And LPe31002 of Emulex HBA.. The QLogic HBA can only be used as a target. You can use Emulex HBA to work as an initiator, if an initiator HBA is required.

Configuring SAN clients

Table 5-4 shows the steps to configure SAN clients.

Table 5-4 SAN Client and Fibre Transport configuration process

Step	Task	Section
Step 1	Configure firewalls on SAN clients	See “ About configuring firewalls for SAN clients ” on page 52.
Step 2	Configure SAN client drivers	See “ SAN client driver requirements ” on page 52.
Step 3	Configure the SAN client FT service	See “ Configuring the SAN client Fibre Transport service ” on page 53.

About configuring firewalls for SAN clients

NetBackup SAN clients require connectivity to the NetBackup primary server.

Therefore, you must ensure that any firewall (software or hardware) allows the clients to communicate with the NetBackup primary server.

SAN client driver requirements

The operating systems of the NetBackup SAN clients may require device drivers that allow SCSI pass-through methods for the Fibre Transport traffic.

If the SAN client operating system is configured correctly, it recognizes each media server HBA port in target mode as two ARCHIVE Python devices.

[Table 5-5](#) lists the driver requirements for each supported SAN client operating system.

Table 5-5 SAN client operating system driver requirements

Operating system	Driver requirements
AIX	Client systems require the standard tape driver. The driver should work without modification. For information about how to configure the driver, see the <i>NetBackup Device Configuration Guide</i> , available at the following URL: http://www.veritas.com/docs/DOC5332

Table 5-5 SAN client operating system driver requirements (*continued*)

Operating system	Driver requirements
HP-UX	<p>Client systems require the <code>scstl</code> driver and pass-through device files.</p> <p>For information about how to configure the driver, see the <i>NetBackup Device Configuration Guide</i>, available at the following URL:</p> <p>http://www.veritas.com/docs/DOC5332</p>
Linux	<p>Client systems require the SCSI Generic (<code>sg</code>) driver and pass-through device files.</p> <p>For information about how to configure the driver, see the <i>NetBackup Device Configuration Guide</i>, available at the following URL:</p> <p>http://www.veritas.com/docs/DOC5332</p>
Solaris	<p>You must modify the <code>/kernel/drv/st.conf</code> file so that Solaris recognizes the FT devices on the NetBackup media servers.</p> <p>For information about how to do so, see the <i>NetBackup Device Configuration Guide</i>, available at the following URL:</p> <p>http://www.veritas.com/docs/DOC5332</p>
Windows	<p>A device driver is not required. The media server FT devices appear in the Windows Device Manager "Other devices" section as ARCHIVE Python SCSI Sequential Devices.</p>

Some operating systems require specific patch and driver updates. For information about them, see the *NetBackup Release Notes*:

<http://www.veritas.com/docs/DOC5332>

Configuring the SAN client Fibre Transport service

You must enable the SAN Client Fibre Transport Service on the NetBackup clients that you want to function as SAN clients. During this process, the SAN client operating system discovers the FT devices on the FT media servers.

Warning: NetBackup SAN clients cannot also be NetBackup servers. Therefore, only configure a client to be a SAN client on systems on which the NetBackup client software only is installed.

See "Configuring SAN clients in a cluster" on page 55.

See [“Registering a SAN client cluster virtual name”](#) on page 56.

To configure a NetBackup client to be a SAN client

- 1 Verify that the Veritas PBX service is active on the client, as follows:
 - On UNIX and Linux systems, run the `NetBackup bpps -x` command and verify that the `pbx_exchange` process is active.
 - On Windows systems, use the Computer Management console to verify that the Veritas Private Branch Exchange service is active.
- 2 On the client, run the following command to enable the SAN Client Fibre Transport Service (`nbftclnt`):

UNIX and Linux:

```
/usr/opensv/netbackup/bin/bpclntcmd -sanclient 1
```

Windows:

```
install_path\NetBackup\bin\bpclntcmd.exe -sanclient 1
```

- 3 Do the following to start the SAN client FT service:
 - Linux: Boot the system, which also begins operating system device discovery. (Alternatively, you can run the NetBackup `bp.start_all` command to start the client FT service.)
 - AIX, HP-UX, and Solaris: Run the NetBackup `bp.start_all` command. The command resides in the following directory:
`/usr/opensv/netbackup/bin`
 - Windows: Boot the system, which also begins operating system device discovery.
- 4 On the systems that were not booted in step 3, perform the action that forces the SAN client operating system to discover devices.

The operating system must discover two FT devices for each media server HBA port that is in target mode.

The SAN Client Fibre Transport Service (`nbftclnt`) validates the driver stack functionality during device discovery. If validation fails, Fibre Transport is not enabled on the client.

See [“SAN client Fibre Transport service validation”](#) on page 85.

After the client OS discovers the FT devices, the SAN client is registered with NetBackup. You should not have to add the SAN client either manually or by using the Device Configuration Wizard.

- 5 If the client system does not discover the FT devices, verify the following:

- The Fibre Channel driver is installed on the SAN client.
- The SAN client HBA port is active on the Fibre Channel switch.
- The media server HBA port is active on the Fibre Channel switch.
- The SAN client is logged into the Fibre Channel switch name server.
- The FT media server is logged into the Fibre Channel switch name server.
- The FT media server port is zoned with the SAN client port.
- The zone is included in the active configuration.

Alternatively, you can try a scan operation for FT devices on a client system.

See [“Rescanning for Fibre Transport devices from a SAN client”](#) on page 68.

Configuring SAN clients in a cluster

The SAN Client FT service is not a cluster application. To protect the SAN clients that are in a cluster, you must configure all of the SAN clients in the cluster correctly.

See [“Setting NetBackup configuration options by using the command line”](#) on page 56.

See [“Configuring SAN clients”](#) on page 51.

Table 5-6 Process to configure a SAN client in a cluster

Step	Action	Description
Step 1	Install the NetBackup client software on each failover node	See the <i>NetBackup Installation Guide for UNIX and Windows</i> : http://www.veritas.com/docs/DOC5332
Step 2	Configure the SAN client on each failover node	Ensure that the FT service is active on all of the failover nodes. See “About configuring firewalls for SAN clients” on page 52. See “SAN client driver requirements” on page 52. See “Configuring the SAN client Fibre Transport service” on page 53.
Step 3	Register the virtual node name with the EMM server	See “Registering a SAN client cluster virtual name” on page 56.

Table 5-6 Process to configure a SAN client in a cluster (*continued*)

Step	Action	Description
Step 4	Configure the NetBackup local cache	<p>On each SAN Client in the cluster, set the NetBackup LOCAL_CACHE option to NO.</p> <p>See “About NetBackup SAN Client support for clustering” on page 16.</p> <p>See “Setting NetBackup configuration options by using the command line” on page 56.</p> <p>Warning: Do not change the LOCAL_CACHE value on the FT media servers or the primary server.</p>

Registering a SAN client cluster virtual name

If you use a cluster to protect a client, you must register the cluster virtual name with the NetBackup Enterprise Media Manager.

See [“Configuring SAN clients in a cluster”](#) on page 55.

To register a cluster virtual name

- 1 Add the virtual name to the EMM database. The following is the command syntax:

```
nbenmcmd -addhost -machinename virtual_name -machinetype
app_cluster
```

The following is the path to the `nbenmcmd` command:

- **UNIX:** `/usr/opensv/netbackup/bin/admincmd`
- **Windows:** `install_path\Program Files\VERITAS\NetBackup\bin\admincmd`

- 2 For every client in the node, update the host so the virtual name is linked to the client host name. The following is the command syntax:

```
nbenmcmd -updatehost -add_server_to_app_cluster -machinename
client_name -clustername virtual_name
```

Setting NetBackup configuration options by using the command line

Veritas recommends that you use the **NetBackup Administration Console Host Properties** to configure NetBackup properties.

However, some properties cannot be set by using the **Administration Console**. You can set those properties by using the following NetBackup commands:

For a NetBackup server: `bpsetconfig`

For a NetBackup client: `nbsetconfig`

Configuration options are key and value pairs, as shown in the following examples:

- `CLIENT_READ_TIMEOUT = 300`
- `LOCAL_CACHE = NO`
- `RESUME_ORIG_DUP_ON_OPT_DUP_FAIL = TRUE`
- `SERVER = server1.example.com`

You can specify some options multiple times, such as the `SERVER` option.

To set configuration options by using the command line

- 1 In a command window or shell window on the host on which you want to set the property, invoke the appropriate command. The command depends on the operating system and the NetBackup host type (client or server), as follows:

UNIX On a NetBackup client:

```
/usr/opensv/netbackup/bin/nbsetconfig
```

On a NetBackup server:

```
/usr/opensv/netbackup/bin/admincmd/bpsetconfig
```

Windows On a NetBackup client:

```
install_path\NetBackup\bin\nbsetconfig.exe
```

On a NetBackup server:

```
install_path\NetBackup\bin\admincmd\bpsetconfig.exe
```

- 2 At the command prompt, enter the key and the value pairs of the configuration options that you want to set, one pair per line.

You can change existing key and value pairs.

You can add key and value pairs.

Ensure that you understand the values that are allowed and the format of any new options that you add.

- 3 To save the configuration changes, type the following, depending on the operating system:

Windows: `Ctrl + Z Enter`

UNIX: `Ctrl + D Enter`

About configuring Fibre Transport properties

NetBackup Fibre Transport properties control how your SAN clients use the Fibre Transport services for backups. NetBackup uses a hierarchy of properties to provide increasingly granular control of how your clients use NetBackup Fibre Transport. The following table describes the levels of property configuration in the **Host Properties** of the **NetBackup Administration Console**.

Table 5-7 Fibre Transport properties

Granularity	Description
Global FT properties for all SAN clients	<p>Global FT properties apply to all SAN clients. Global FT properties are configured on the primary server.</p> <p>Configure these properties in Host Properties > Primary Servers in the NetBackup Administration Console.</p>
FT properties for a media server or media servers	<p>FT properties for a media server or servers apply to the SAN clients that the media server or servers back up. The properties override the global FT properties that are configured on the primary server.</p> <p>Configure these properties in Host Properties > Media Servers in the NetBackup Administration Console.</p>
FT properties for a SAN client or SAN clients	<p>FT properties for a client or clients apply to the specific SAN client or clients. FT properties for SAN clients override the media server FT properties.</p> <p>Configure these properties in Host Properties > Clients in the NetBackup Administration Console.</p>

See [“Configuring Fibre Transport properties”](#) on page 59.

NetBackup provides one finer level of granularity for Fibre Transport. SAN client usage preferences override the FT properties that you configure through **Host Properties**.

See [“SAN client usage preferences”](#) on page 65.

See [“Configuring SAN Client and Fibre Transport”](#) on page 31.

Configuring Fibre Transport properties

NetBackup Fibre Transport properties control how your SAN clients use the Fibre Transport services for backups. NetBackup uses a hierarchy of properties to provide increasingly granular control of how your clients use NetBackup Fibre Transport.

See [“About configuring Fibre Transport properties”](#) on page 58.

To configure NetBackup FT properties

- 1** In the **NetBackup Administration Console**, in the left pane, expand **NetBackup Management > Host Properties**.
- 2** Depending on which level of properties you want to configure, do one of the following:

To configure global FT properties Select **Primary Servers**.

To configure FT properties for a media server or servers Select **Media Servers**.

To configure FT properties for a client or clients Select **Clients**.

- 3** Select the host or hosts to configure, as follows:
 - To configure the properties on one host, double-click the name of the host in the right pane.
 - To configure properties for more than one host, select the hosts and then on the **Actions** menu select **Properties**.
- 4** In the host properties dialog box, click **Fibre Transport** in the left pane.
- 5** Configure the properties.
 See [“Fibre Transport properties”](#) on page 60.

Fibre Transport properties

NetBackup Fibre Transport properties control how your Fibre Transport media servers and SAN clients use the Fibre Transport service for backups and restores. The **Fibre Transport** properties apply to the host type that you select in the **NetBackup Administration Console**, as follows:

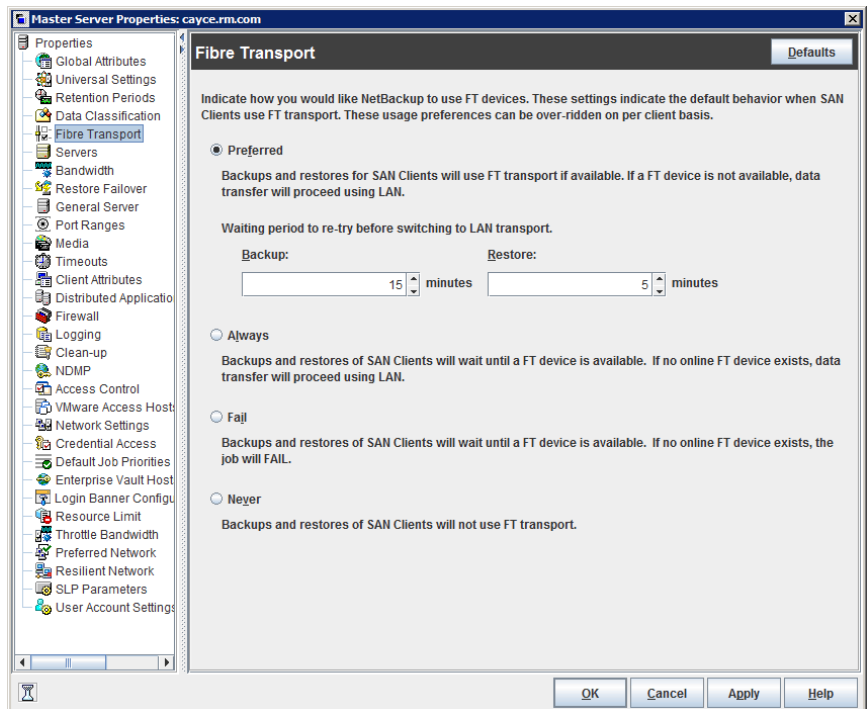
Table 5-8 Host types for Fibre Transport properties

Host type	Description
Primary server	Global Fibre Transport properties that apply to all SAN clients.
Media server	The Fibre Transport Maximum concurrent FT connections property applies to the FT media server or servers that you selected in the NetBackup Administration Console .

Table 5-8 Host types for Fibre Transport properties (*continued*)

Host type	Description
Client	The Fibre Transport properties apply to the SAN client or clients that you selected in the NetBackup Administration Console . The default values for clients are the global property settings of the primary server. Client properties override the global Fibre Transport properties.

Figure 5-1 Fibre Transport host properties for a primary server



[Table 5-9](#) describes the **Fibre Transport** properties. All properties are not available for all hosts. In this table, FT device is an HBA port on a Fibre Transport media server. The port carries the backup and restore traffic. A media server may have more than one FT device.

Table 5-9 Fibre Transport dialog box properties

Property	Description
Maximum concurrent FT connections	<p>This property appears only when you select an FT media server or servers in the NetBackup Administration Console.</p> <p>This property specifies the number of FT connections to allow to the selected media server or media servers. A connection is equivalent to a job.</p> <p>If no value is set, NetBackup uses the following defaults:</p> <ul style="list-style-type: none"> ■ For NetBackup Appliance model 5330 and later: 32 ■ For NetBackup Appliance model 5230 and later: 32 ■ For NetBackup Fibre Transport media servers: 8 times the number of fast HBA ports on the media server plus 4 times the number of slow HBA ports. A fast port is 8 GB or faster, and a slow port is less than 8 GB. <p>You can enter up to the following maximum connections for the media server or servers to use:</p> <ul style="list-style-type: none"> ■ On a Linux FT media server host: 40. It is recommended that you use 32 or fewer connections concurrently on Linux. On Linux hosts, you can increase that maximum by setting a NetBackup touch file, <code>NUMBER_DATA_BUFFERS_FT</code>. See “About Linux concurrent FT connections” on page 63. ■ For NetBackup Appliance model 5330 and later: 40. ■ For NetBackup Appliance model 5230 and later: 40. ■ On a Solaris FT media server host: 64. <p>NetBackup supports 644 buffers per media server for Fibre Transport. To determine the number of buffers that each connection uses, divide 644 by the value you enter. More buffers per connection equal better performance for each connection.</p>
Use defaults from the master server configuration	<p>This property appears only when you select a client or client in the NetBackup Administration Console.</p> <p>This property specifies that the client follow the properties as they are configured on the primary server.</p>
Preferred	<p>The Preferred property specifies to use an FT device if one is available within the configured wait period in minutes. If an FT device is not available after the wait period elapses, NetBackup uses a LAN connection for the operation.</p> <p>If you select this option, also specify the wait period for backups and for restores.</p> <p>For the global property that is specified on the primary server, the default is Preferred.</p>

Table 5-9 Fibre Transport dialog box properties (*continued*)

Property	Description
Always	<p>The Always property specifies that NetBackup should always use an FT device for backups and restores of SAN clients. NetBackup waits until an FT device is available before it begins the operation.</p> <p>However, an FT device must be online and up. If not, NetBackup uses the LAN. An FT device may be unavailable because none are active, none have been configured, or the SAN Client license expired.</p>
Fail	<p>The Fail property specifies that NetBackup should fail the job if an FT device is not online and up. If the FT devices are online but busy, NetBackup waits until a device is available and assigns the next job to the device. An FT device may be unavailable because none are active, none have been configured, or the SAN Client license expired.</p>
Never	<p>The Never property specifies that NetBackup should never use an FT pipe for backups and restores of SAN clients. NetBackup uses a LAN connection for the backups and restores.</p> <p>If you specify Never for the primary server, Fibre Transport is disabled in the NetBackup environment. If you select Never, you can configure FT usage on a per-client basis.</p> <p>If you specify Never for a media server, Fibre Transport is disabled for the media server.</p> <p>If you specify Never for a SAN client, Fibre Transport is disabled for the client.</p>

See [“Configuring Fibre Transport properties”](#) on page 59.

NetBackup provides one finer level of granularity for Fibre Transport. SAN client usage preferences override the FT properties that you configure through **Host Properties**.

See [“About SAN client usage preferences”](#) on page 64.

For more information about NetBackup Fibre Transport, see the [NetBackup SAN Client and Fibre Transport Guide](#).

About Linux concurrent FT connections

NetBackup uses the **Maximum concurrent FT connections Fibre Transport** host property to configure the number of concurrent connections to a Fibre Transport media server, up to the total that is allowed per host.

See [“Fibre Transport properties”](#) on page 60.

If the total number of concurrent connections on Linux is too low for your purposes, you can increase the total number of concurrent connections. The consequence is that each client backup or restore job uses fewer buffers, which means that each job is slower because of fewer buffers. To increase the number of concurrent connections, reduce the number of buffers per connection. To do so, create the following file and include one of the supported values from [Table 5-10](#) in the file:

```
/usr/opensv/netbackup/db/config/NUMBER_DATA_BUFFERS_FT
```

[Table 5-10](#) shows the values that NetBackup supports for the `NUMBER_DATA_BUFFERS_FT` file. NetBackup supports 644 buffers per media server for Fibre Transport.

Table 5-10 Supported values for buffers per FT connection

<code>NUMBER_DATA_BUFFERS_FT</code>	Total concurrent connections: NetBackup 5230 and 5330 and later appliances	Total concurrent connections: Linux FT media server
16	40	40
12	53	53
10	64	64

If you want, you then can limit the number of connections for a media server or media servers by using the **Maximum concurrent FT connections** of the **Fibre Transport** host properties.

About SAN client usage preferences

SAN client usage preferences let you configure how a SAN client uses NetBackup Fibre Transport for backups.

See [“Configuring SAN client usage preferences”](#) on page 64.

The usage preferences override the FT transport properties.

See [“About configuring Fibre Transport properties”](#) on page 58.

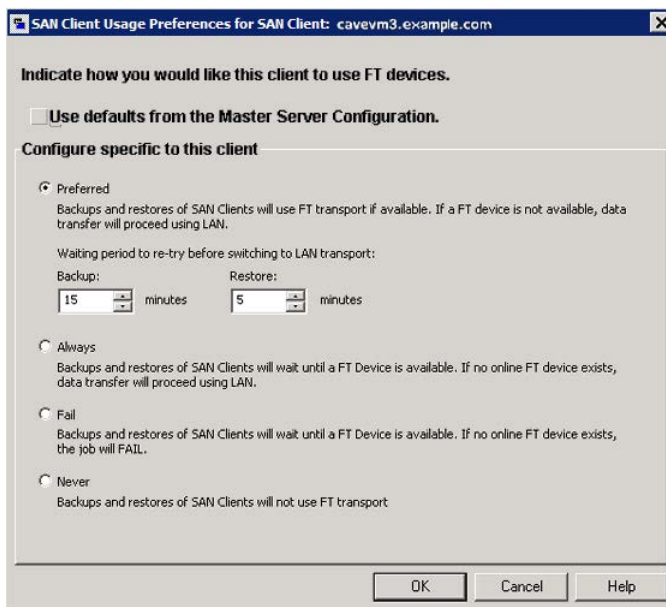
Configuring SAN client usage preferences

SAN client usage preferences let you configure how a specific client uses NetBackup Fibre Transport for backups.

SAN client usage preferences override the NetBackup Fibre Transport properties.

To configure SAN client usage preferences by using the Devices node

- 1** In the **NetBackup Administration Console**, in the left pane, expand **Media and Device Management > Devices**.
- 2** Select **SAN Clients**.
- 3** Select a client or clients in the right pane.
- 4** On the **Actions** menu, select **SAN Client Usage Preferences**.
- 5** In the **SAN Client Usage Preferences** dialog box, configure the properties.



See “SAN client usage preferences” on page 65.

SAN client usage preferences

The following table describes the Fibre Transport usage preferences for SAN clients.

Table 5-11 SAN client Fibre Transport usage preferences

Property	Description
Use defaults from the primary server configuration	This property specifies that the client follow the properties as they are configured on the primary server.

Table 5-11 SAN client Fibre Transport usage preferences (*continued*)

Property	Description
Preferred	<p>The Preferred property specifies to use an FT device if one is available within the configured wait period in minutes. If an FT device is not available after the wait period elapses, NetBackup uses a LAN connection for the operation.</p> <p>If you select this option, also specify the wait period for backups and for restores.</p> <p>For the global property that is specified on the primary server, the default is Preferred.</p>
Always	<p>The Always property specifies that NetBackup should always use an FT device for backups and restores of SAN clients. NetBackup waits until an FT device is available before it begins the operation.</p> <p>However, an FT device must be online and up. If not, NetBackup uses the LAN. An FT device may not exist because none is active, none have been configured, or the SAN Client license expired.</p>
Fail	<p>The Fail property specifies that NetBackup should fail the job if an FT device is not online and up. If the FT devices are online but busy, NetBackup waits until a device is available and assigns the next job to the device. An FT device may not exist because none is active, none have been configured, or the SAN Client license expired.</p>
Never	<p>The Never property specifies that NetBackup should never use an FT pipe for backups and restores of SAN clients. NetBackup uses a LAN connection for the backups and restores.</p> <p>If you specify Never for the primary server, Fibre Transport is disabled in the NetBackup environment. If you select Never, you can configure FT usage on a per-client basis.</p> <p>If you specify Never for a media server, Fibre Transport is disabled for the media server.</p> <p>If you specify Never for a SAN client, Fibre Transport is disabled for the client.</p>

Managing SAN clients and Fibre Transport

This chapter includes the following topics:

- [Enabling or disabling the Fibre Transport services](#)
- [Enabling or disabling the Fibre Transport services for a 16-gigabit target mode HBA support](#)
- [Rescanning for Fibre Transport devices from a SAN client](#)
- [Viewing SAN Client Fibre Transport job details](#)
- [Viewing Fibre Transport traffic](#)
- [Adding a SAN client](#)
- [Deleting a SAN client](#)

Enabling or disabling the Fibre Transport services

You can enable or disable the FT services on NetBackup FT media servers.

The following are the services that compose the FT server:

- The `nbftsrvr` service manages the server side of the FT pipe.
- The `nbfdrv64` service controls the target mode drivers on the media server.

The `nbftsrvr` service starts the `nbfdrv64` service. If you stop one, the other stops. If one ends abnormally, the other stops.

These services do not appear in the **NetBackup Activity Monitor**; they do appear in the operating system process displays.

Warning: Do not use the UNIX `kill -9` command and option to stop the `nbfdrv64` process. It does not allow the process to stop gracefully, and the SAN clients cannot detect the FT devices when the `nbfdrv64` process dies. You then may have to restart the client systems so they detect the FT devices again (after you restart `nbfdrv64`).

To enable or disable FT services

- 1 In the **NetBackup Administration Console** on the primary server, in the left pane, expand **Media and Device Management > Devices > Media Server**.
- 2 Select an FT media server in the right pane.
- 3 Click either **Actions > Enable FT Services** or **Actions > Disable FT Services**.

Enabling or disabling the Fibre Transport services for a 16-gigabit target mode HBA support

You can enable or disable the FT services on NetBackup FT media servers.

The following is the service that composes the FT server:

- The `nbftsrvr` service manages the server side of the FT pipe.

This service does not appear in the **NetBackup Activity Monitor**; it does appear in the operating system process displays.

To enable or disable FT services

- 1 In the **NetBackup Administration Console** on the primary server, in the left pane, expand **Media and Device Management > Devices > Media Server**.
- 2 Select an FT media server in the right pane.
- 3 Click either **Actions > Enable FT Services** or **Actions > Disable FT Services**.

Rescanning for Fibre Transport devices from a SAN client

A rescan operation tries to find new FT devices from the client. If the scan detects new FT devices, NetBackup adds them to the EMM database. A rescan operation is a time- and compute-intensive operation. It may not discover new devices (especially if the client system requires a restart and you do not restart it).

Depending on the operating system capabilities and the HBA driver and its settings, the scan may search for new Fibre Channel devices.

To rescan SAN clients

- 1 On Microsoft Windows clients, use the Windows Device Manager to scan for hardware changes.
- 2 In the **NetBackup Administration Console**, in the left pane, expand **Media and Device Management > Devices > SAN Clients**.
- 3 Select a client in the right pane.
- 4 Click **Action > Rescan SAN Client FT Devices**.
- 5 In the **Rescan SAN Client** dialog box, monitor the following status of the operation:
 - Initiated
 - Client system must be restarted
 - Failure
- 6 If required, restart the client system.

Viewing SAN Client Fibre Transport job details

The **NetBackup Administration Console** Activity Monitor **Jobs** tab displays all of the jobs that are in progress or have been completed.

The **Transport** column in the **Jobs** tab window shows the type of transport between the SAN client and the NetBackup media server: FT for Fibre Transport or blank for inactive or for a LAN.

The **Detailed Status** tab of the **Job Details** dialog shows more detailed information about the job, including the following:

- A **Transport Type** field in the header area shows the same information as the **Transport** column in the **Jobs** tab.
- Messages in the **Status** window show the status of jobs that use FT transport, as follows:
 - Queuing for FT transport
 - Allocated FT transport
 - Opening FT connection
 - Closing FT connection

See [“Viewing Fibre Transport traffic”](#) on page 70.

To view job details

- ◆ Double-click the job in the **Jobs** tab.

The **Job Details** dialog appears that contains detailed job information on a **Job Overview** tab and a **Detailed Status** tab.

Viewing Fibre Transport traffic

You can view the current activity between FT media servers and SAN clients. The following two views are available:

FT media server view The media server view shows all of the inbound backup (and outbound restore) traffic for a selected FT media server.

Use this view to determine which SAN clients can send data to and receive data from the selected media server.

See [“To view FT activity from the media server perspective”](#) on page 70.

SAN Client view The SAN client view shows all of the outbound backup (and inbound restore) traffic for a selected client.

Use this view to determine which FT media servers can send data to and receive data from the selected client.

See [“To view FT activity from the client perspective”](#) on page 70.

See [“Viewing SAN Client Fibre Transport job details”](#) on page 69.

To view FT activity from the media server perspective

- 1** In the **NetBackup Administration Console**, in the left pane, expand **Media and Device Management > Devices > Media Server**.
- 2** Select an FT media server in the right pane.
- 3** Click **Actions > View FT Connections**.

The **Media Server Fibre Transport View** dialog box shows the connection activity for the media server.

To view FT activity from the client perspective

- 1** In the **NetBackup Administration Console**, in the left pane, expand **Media and Device Management > Devices > SAN Clients**.
- 2** Select a client in the right pane.
- 3** Click **Actions > View FT Connections**.

The **SAN Client Fibre Transport View** dialog box shows the connection activity for the client.

Adding a SAN client

If you configure a SAN client and it does not appear as a SAN client in your NetBackup environment, you can add the client. To do so, use the **NetBackup Device Configuration Wizard** or the **NetBackup Administration Console**.

The SAN client must be configured correctly and the SAN client FT service must be active.

To add a SAN client by using the wizard

- 1 In the **NetBackup Administration Console**, in the left pane, select **Media and Device Management**.
- 2 In the right pane, click **Configure Storage Devices**.
- 3 Follow the wizard screens.
- 4 If the SAN client does not appear on the SAN clients screen, click **Add** to add it manually.

To add a SAN client by using the Administration Console

- 1 In the **NetBackup Administration Console**, in the left pane, select **Media and Device Management > Devices > SAN Clients**.
- 2 Click **Actions > New > New SAN Client**.
- 3 In the **New SAN Client** dialog box, enter the name of the client and click **OK**.

NetBackup queries the client and adds it to the **SAN Clients** list in the **Administration Console** window.

Deleting a SAN client

Use the following procedure to delete a SAN client from your NetBackup configuration. The SAN client remains a NetBackup client, but it no longer functions as a SAN client.

To delete a SAN client

- 1 Disable the SAN client services.
See [“Disabling a SAN client”](#) on page 72.
- 2 In the **NetBackup Administration Console**, in the left pane, select **Media and Device Management > Devices > SAN Clients**.
- 3 Select a client in the right pane.
- 4 Click **Edit > Delete**.

Disabling SAN Client and Fibre Transport

This chapter includes the following topics:

- [About disabling SAN Client and Fibre Transport](#)
- [Disabling a SAN client](#)
- [Disabling a Fibre Transport media server](#)
- [Disabling a Fibre Transport media server for a 16-gigabit target mode HBA support](#)

About disabling SAN Client and Fibre Transport

You cannot uninstall the SAN Client and Fibre Transport components. However, you can disable the SAN clients and the FT media servers.

See [“Disabling a SAN client”](#) on page 72.

See [“Disabling a Fibre Transport media server”](#) on page 73.

Disabling a SAN client

You can disable a SAN client. If you do, the client cannot backup over the SAN to an FT media server.

See [“About disabling SAN Client and Fibre Transport”](#) on page 72.

After you disable a SAN client, you can remove it from your NetBackup environment.

See [“Deleting a SAN client”](#) on page 71.

To disable the NetBackup SAN client service on UNIX

- 1 To stop the service, run the following command on the client:

```
/usr/opensv/netbackup/bin/nbftclnt -terminate
```

- 2 To configure the host so it does not start the SAN client service after a computer restart, run the following command:

```
/usr/opensv/netbackup/bin/bpclntcmd -sanclient 0
```

To disable the NetBackup SAN client service on Windows

- 1 Use Windows Computer Management to stop the NetBackup SAN Client Service.
- 2 To configure the host so it does not start the SAN client service after a restart, run the following command:

```
install_path\NetBackup\bin\bpclntcmd.exe -sanclient 0
```

Disabling a Fibre Transport media server

You can disable an FT media server and remove the operating system FT startup scripts from the media server. The process also removes the `nbhba` driver and exits `nbhba` mode. The media server then does not support NetBackup Fibre Transport.

See [“About disabling SAN Client and Fibre Transport”](#) on page 72.

Warning: On Solaris systems, `/etc/driver_aliases` file entries may remain after you remove the FT services and the `nbhba` driver. The entries are in the form of `qla2300 "pci1077,xxx"` or `qla2300 "pciex1077,xxx"`. The entries are harmless; however, if you attempt to remove them, the system may not boot. Sun Microsystems recommends that you do not edit the `/etc/driver_aliases` file.

To disable an FT media server and remove drivers

- 1 On the FT media server, run the following script:

```
/usr/opensv/netbackup/bin/admincmd/nbftsrv_config -d
```

- 2 Verify that the following startup scripts were removed:

On Linux systems, the following are the scripts:

```
/etc/rc.d/rc2.d/S21nbftserver  
/etc/rc.d/rc3.d/S21nbftserver  
/etc/rc.d/rc5.d/S21nbftserver  
/etc/rc.d/rc0.d/K03nbftserver  
/etc/rc.d/rc6.d/K03nbftserver  
/lib/modules/ 2.6.*smp/kernel/drivers/misc/ql2300_stub.ko  
/lib/modules/ 2.6.*smp/kernel/drivers/misc/windr6.ko
```

On Solaris systems, the following are the scripts:

```
/etc/rc2.d/S21nbftserver  
/etc/rc0.d/K03nbftserver  
/usr/kernel/drv/windr6.conf  
/usr/kernel/drv/sparcv9/windr6  
/usr/kernel/drv/sparcv9/ql2300_stub
```

- 3 If the startup scripts were not removed, delete them manually.
- 4 Run the following script:

```
/usr/opensv/netbackup/bin/admincmd/nbftconfig -ds  
ft_server_host_name
```

Disabling a Fibre Transport media server for a 16-gigabit target mode HBA support

You can disable an FT media server and remove the operating system FT startup scripts from the media server. The process also removes the SCST and QLogic or Emulex drivers. The media server then does not support NetBackup Fibre Transport.

See [“About disabling SAN Client and Fibre Transport”](#) on page 72.

To disable an FT media server and remove drivers

- 1** On the FT media server, run the following script:

```
/usr/opensv/netbackup/bin/admincmd/nbftsrv_config -scst -uninstall
```

- 2** Verify that the following startup scripts were removed:

```
scripts: (/etc/rc.d/)
    /etc/rc.d/init.d/nbftserver
    /etc/rc.d/rc2.d/S21nbftserver
    /etc/rc.d/rc3.d/S21nbftserver
    /etc/rc.d/rc5.d/S21nbftserver
    /etc/rc.d/rc0.d/K03nbftserver
    /etc/rc.d/rc1.d/K03nbftserver
    /etc/rc.d/rc6.d/K03nbftserver
drivers: (lib/modules/xxx/extra)
    qla2x00tgt.ko
    qla2xxx.ko
    scst.ko
    scst_user.ko
firmwares: (/lib/firmware)
    ql2700-firmware-8.07.10.bin and ql2700_fw.bin
    ql2500-firmware-8.04.00.bin and ql2500_fw.bin
folders:
    /var/lib/scst/vdev_mode_pages
    /var/lib/scst/pr
    /usr/share/doc/ql2500-firmware-8.04.00
/etc/modules-load.d/scst.conf
```

- 3** If the startup scripts were not removed, delete them manually. After you remove the files, rename `ql2500_fw_original.bin` to `ql2500_fw.bin`.

- 4** Run the following script:

```
/usr/opensv/netbackup/bin/admincmd/nbftconfig -ds
ft_server_host_name
```

Note: If your `/boot` partition does not have enough disk space, manually delete images like

`initramfs-3.10.0-514.26.2.el7.x86_64.img.10-23-17.17:22:37` to get more disk space.

Troubleshooting SAN Client and Fibre Transport

This chapter includes the following topics:

- [About troubleshooting SAN Client and Fibre Transport](#)
- [SAN Client troubleshooting tech note](#)
- [Viewing Fibre Transport logs](#)
- [About unified logging](#)
- [Stopping and starting Fibre Transport services](#)
- [Stopping and starting Fibre Transport services for a 16-gigabit target mode HBA support](#)
- [Backups failover to LAN even though Fibre Transport devices available](#)
- [Kernel warning messages when Veritas modules load](#)
- [SAN client service does not start](#)
- [SAN client Fibre Transport service validation](#)
- [SAN client does not select Fibre Transport](#)
- [Media server Fibre Transport device is offline](#)
- [No Fibre Transport devices discovered](#)

About troubleshooting SAN Client and Fibre Transport

SAN Client and Fibre Transport troubleshooting information is available.

See “[SAN Client troubleshooting tech note](#)” on page 77.

See “[Viewing Fibre Transport logs](#)” on page 77.

See “[Stopping and starting Fibre Transport services](#)” on page 82.

See “[Backups failover to LAN even though Fibre Transport devices available](#)” on page 84.

See “[SAN client service does not start](#)” on page 85.

See “[SAN client Fibre Transport service validation](#)” on page 85.

See “[SAN client does not select Fibre Transport](#)” on page 86.

See “[Media server Fibre Transport device is offline](#)” on page 87.

See “[No Fibre Transport devices discovered](#)” on page 88.

SAN Client troubleshooting tech note

More troubleshooting information about SAN clients and Fibre Transport is available on the Veritas Enterprise Support Web site in the following Tech Note:

<http://www.veritas.com/docs/TECH51454>

The Tech Note contents are updated when new information is available. The Tech Note may contain more current information than this guide.

Viewing Fibre Transport logs

You can monitor Fibre Transport activity and status by viewing the log messages that the FT processes generate. Veritas Unified Logging (VxUL) uses a standardized name and file format for log files. An originator ID identifies the process that writes the log messages.

[Table 8-1](#) shows the VxUL originator IDs of the processes that log information about FT activity.

Table 8-1 Fibre Transport originator IDs

Originator ID	FT processes that use the ID
199	<p><code>nbftsrvr</code> and <code>nbfdrv64</code>. The media server Fibre Transport services.</p> <p>For a 16-gigabit target mode HBA support only <code>nbftsrvr</code> is supported. The media server Fibre Transport services.</p> <p>Note: You can use only one of the two methods.</p>
200	<code>nbftclnt</code> . The client Fibre Transport service.
201	The FT Service Manager. Runs in the Enterprise Media Manager service.

To view and manage VxUL log files, you must use NetBackup log commands.

See [“About unified logging”](#) on page 78.

Configure the amount of information that is collected and its retention length on the NetBackup primary server in the **Logging** properties and **Clean-up** properties.

Information about how to configure logging and clean-up properties is available in the *NetBackup Administrator's Guide, Volume I*:

<http://www.veritas.com/docs/DOC5332>

See [“About troubleshooting SAN Client and Fibre Transport”](#) on page 77.

About unified logging

Unified logging creates log file names and messages in a format that is standardized across Veritas products. Only the `vxlogview` command can assemble and display the log information correctly. Server processes and client processes use unified logging.

Log files for originator IDs are written to a subdirectory with the name specified in the log configuration file. All unified logs are written to subdirectories in the following directory:

Windows `install_path\NetBackup\logs`

UNIX `/usr/opensv/logs`

You can access logging controls in **Logging** host properties. You can also manage unified logging with the following commands:

- `vxlogcfg` Modifies the unified logging configuration settings.
- `vxlogmgr` Manages the log files that the products that support unified logging generate.
- `vxlogview` Displays the logs that unified logging generates.
 See [“Examples of using vxlogview to view unified logs”](#) on page 81.

About using the `vxlogview` command to view unified logs

Only the `vxlogview` command can assemble and display the unified logging information correctly. The unified logging files are in binary format and some of the information is contained in an associated resource file. These logs are stored in the following directory. You can display `vxlogview` results faster by restricting the search to the files of a specific process.

- UNIX `/usr/openv/logs`
- Windows `install_path\NetBackup\logs`

Table 8-2 Fields in `vxlogview` query strings

Field name	Type	Description	Example
PRODID	Integer or string	Provide the product ID or the abbreviated name of product.	PRODID = 51216 PRODID = 'NBU'
ORGID	Integer or string	Provide the originator ID or the abbreviated name of the component.	ORGID = 116 ORGID = 'nbpem'
PID	Long Integer	Provide the process ID	PID = 1234567
TID	Long Integer	Provide the thread ID	TID = 2874950
STDATE	Long Integer or string	Provide the start date in seconds or in the locale-specific short date and time format. For example, a locale can have the format 'mm/dd/yy hh:mm:ss AM/PM'	STDATE = 98736352 STDATE = '4/26/11 11:01:00 AM'

Table 8-2 Fields in vxlogview query strings (*continued*)

Field name	Type	Description	Example
ENDATE	Long Integer or string	Provide the end date in seconds or in the locale-specific short date and time format. For example, a locale can have the format 'mm/dd/yy hh:mm:ss AM/PM'	ENDATE = 99736352 ENDATE = '04/27/11 10:01:00 AM'
PREVTIME	String	Provide the hours in 'hh:mm:ss' format. This field should be used only with operators =, <, >, >=, and <=	PREVTIME = '2:34:00'
SEV	Integer	Provide one of the following possible severity types: 0 = INFO 1 = WARNING 2 = ERR 3 = CRIT 4 = EMERG	SEV = 0 SEV = INFO
MSGTYPE	Integer	Provide one of the following possible message types: 0 = DEBUG (debug messages) 1 = DIAG (diagnostic messages) 2 = APP (application messages) 3 = CTX (context messages) 4 = AUDIT (audit messages)	MSGTYPE = 1 MSGTYPE = DIAG
CTX	Integer or string	Provide the context token as string identifier or 'ALL' to get all the context instances to be displayed. This field should be used only with the operators = and !=.	CTX = 78 CTX = 'ALL'

Table 8-3 Examples of query strings with dates

Example	Description
<code>(PRODID == 51216) && ((PID == 178964) ((STDATE == '2/5/15 09:00:00 AM') && (ENDATE == '2/5/15 12:00:00 PM')))</code>	Retrieves the log file message for the NetBackup product ID 51216 between 9AM and 12PM on 2015-05-02.
<code>((prodid = 'NBU') && ((stdate >= '11/18/14 00:00:00 AM') && (enddate <= '12/13/14 12:00:00 PM'))) ((prodid = 'BENT') && ((stdate >= '12/12/14 00:00:00 AM') && (enddate <= '12/25/14 12:00:00 PM')))</code>	Retrieves the log messages for the NetBackup product NBU between 2014-18-11 and 2014-13-12 and the log messages for the NetBackup product BENT between 2014-12-12 and 2014-25-12.
<code>(STDATE <= '04/05/15 0:0:0 AM')</code>	Retrieves the log messages that were logged on or before 2015-05-04 for all of the installed Veritas products.

Examples of using vxlogview to view unified logs

The following examples demonstrate how to use the `vxlogview` command to view unified logs.

Table 8-4 Example uses of the vxlogview command

Item	Example
Display all the attributes of the log messages	<code>vxlogview -p 51216 -d all</code>
Display specific attributes of the log messages	Display the log messages for NetBackup (51216) that show only the date, time, message type, and message text: <code>vxlogview --prodid 51216 --display D,T,m,x</code>
Display the latest log messages	Display the log messages for originator 116 (<code>nbpem</code>) that were issued during the last 20 minutes. Note that you can specify <code>-o nbpem</code> instead of <code>-o 116</code> : <code># vxlogview -o 116 -t 00:20:00</code>
Display the log messages from a specific time period	Display the log messages for <code>nbpem</code> that were issued during the specified time period: <code># vxlogview -o nbpem -b "05/03/15 06:51:48 AM" -e "05/03/15 06:52:48 AM"</code>

Table 8-4 Example uses of the vxlogview command (*continued*)

Item	Example
<p>Display results faster</p>	<p>You can use the <code>-i</code> option to specify an originator for a process:</p> <pre data-bbox="356 378 615 404"># vxlogview -i nbpem</pre> <p>The <code>vxlogview -i</code> option searches only the log files that the specified process (<code>nbpem</code>) creates. By limiting the log files that it has to search, <code>vxlogview</code> returns a result faster. By comparison, the <code>vxlogview -o</code> option searches all unified log files for the messages that the specified process has logged.</p> <p>Note: If you use the <code>-i</code> option with a process that is not a service, <code>vxlogview</code> returns the message "No log files found." A process that is not a service has no originator ID in the file name. In this case, use the <code>-o</code> option instead of the <code>-i</code> option.</p> <p>The <code>-i</code> option displays entries for all OIDs that are part of that process including libraries (137, 156, 309, etc.).</p>
<p>Search for a job ID</p>	<p>You can search the logs for a particular job ID:</p> <pre data-bbox="356 807 893 833"># vxlogview -i nbpem grep "jobid=job_ID"</pre> <p>The <code>jobid=</code> search key should contain no spaces and must be lowercase.</p> <p>When searching for a job ID, you can use any <code>vxlogview</code> command option. This example uses the <code>-i</code> option with the name of the process (<code>nbpem</code>). The command returns only the log entries that contain the job ID. It misses related entries for the job that do not explicitly contain the <code>jobid=job_ID</code>.</p>

Stopping and starting Fibre Transport services

Fibre Transport services run on both the FT media servers and SAN clients.

The following are the FT services that run on media servers:

- The `nbftsrvr` service manages the server side of the FT pipe.
- The `nbfdrv64` service controls the target mode drivers on the media server.

The `nbftsrvr` service starts the `nbfdrv64` service. If you stop one, the other stops. If one ends abnormally, the other stops.

The `nbftclnt` FT service runs on SAN clients:

These services do not appear in the NetBackup Activity Monitor; they do appear in the operating system process displays.

Stopping and starting Fibre Transport services for a 16-gigabit target mode HBA support

In normal operation, you should not have to start or stop the services. A Veritas support engineer may direct you to stop and restart services for troubleshooting purposes.

See [“Enabling or disabling the Fibre Transport services”](#) on page 67.

Alternatively, you can use the UNIX `kill` command without the `-9` option to stop the services. The NetBackup `bp.kill_all` command stops the FT services, but it stops all other NetBackup services also.

Warning: Do not use the UNIX `kill -9` command and option to stop the `nbfdv64` process. It does not allow the process to stop gracefully, and the SAN clients cannot detect the FT devices when the `nbfdv64` process dies. You then may have to reboot the client systems so they detect the FT devices again (after you restart `nbfdv64`).

The NetBackup `bp.start_all` command starts all NetBackup services, including the FT services.

Stopping and starting Fibre Transport services for a 16-gigabit target mode HBA support

Fibre Transport services run on both the FT media servers and SAN clients.

The following are the FT services that run on media servers:

- The `nbftsrvr` service manages the server side of the FT pipe.

The `nbftclnt` FT service runs on SAN clients:

These services do not appear in the NetBackup Activity Monitor; they do appear in the operating system process displays.

In normal operation, you should not have to start or stop the services. A Veritas support engineer may direct you to stop and restart services for troubleshooting purposes.

See [“Enabling or disabling the Fibre Transport services”](#) on page 67.

Alternatively, you can use the UNIX `kill` command without the `-9` option to stop the services. The NetBackup `bp.kill_all` command stops the FT services, but it stops all other NetBackup services also.

The NetBackup `bp.start_all` command starts all NetBackup services, including the FT services.

Backups failover to LAN even though Fibre Transport devices available

If a NetBackup FT media server has multiple network interfaces for VLANs, backups may failover to LAN transport if the NetBackup host name order is configured incorrectly.

See “[About Fibre Transport media servers and VLANs](#)” on page 36.

For all of the hosts that participate in the backups, examine their **Additional Servers** lists on their **NetBackup Administration Console** host properties **Servers** pages. Verify that the FT server’s primary host name appears before any other interface names for that FT media server host in. If it does not, fix the incorrect host name order as described in the following table.

Table 8-5 How to fix an incorrect host name order in NetBackup

Task	Procedure
Stop the FT services on the media server	See “ Enabling or disabling the Fibre Transport services ” on page 67.
Delete the FT server from the NetBackup EMM database	Use the following NetBackup command to delete the host from the NetBackup EMM database as an FT media server: <pre>nbftconfig -deleteserver -Me <i>hostname</i></pre> The host remains in the EMM database as a NetBackup media server.
Re-order the Additional Servers list on each host	If necessary, delete all of the network interface names of the FT media server from the Additional Servers list. Then, add the primary host name first and then the remainder of the host names in any order. The Additional Servers list appears in the host properties Servers page for that host. See the <i>NetBackup Administrator's Guide, Volume I</i> : http://www.veritas.com/docs/DOC5332
Start the FT services on the media server	See “ Enabling or disabling the Fibre Transport services ” on page 67.

Table 8-5 How to fix an incorrect host name order in NetBackup (*continued*)

Task	Procedure
Scan for FT devices from each SAN client	When the FT media server is discovered during the rescan operation, NetBackup adds it to the EMM database as an FT media server. See “Rescanning for Fibre Transport devices from a SAN client” on page 68.

Kernel warning messages when Veritas modules load

For Linux operating systems, warning messages similar to the following may appear in the console or the system log when Veritas modules are loaded into the kernel:

```
kernel: ql2300_stub: module license 'Proprietary. Send bug
reports to support@veritas.com' taints kernel.
kernel: ql2300_stub: Version: XXn
kernel: ql2300_stub: $Revision: n.nn
```

The messages appear because the Veritas modules are proprietary. You can ignore them.

SAN client service does not start

The `nbftclnt` service is the SAN Client service that runs on clients. If it does not start on UNIX or Linux systems, one possible cause may be the NetBackup configuration file. The following is the pathname of the file:

```
/usr/opensv/netbackup/bp.conf
```

If the client host name is listed as a `SERVER`, the `nbftclnt` service does not start. If a `SERVER` entry exists for the client, remove the entry and then start the client service.

The client host name should be listed as `CLIENT_NAME` only.

SAN client Fibre Transport service validation

The SAN Client Fibre Transport Service (`nbftclnt`) validates the client system's kernel and driver stack when it starts and during device discovery. Validation verifies that the kernel and the drivers are at supported levels.

If validation succeeds, the SAN client supports FT pipe transfers; FT pipe transfer can occur. If validation fails, FT pipe transfer cannot occur.

To manage the validation failure, the following occurs:

- The SAN Client Fibre Transport Service writes check driver messages in its log file.
- NetBackup sets the FT device status to offline for all FT target devices in the client's SAN zone. (For other clients in the zone that pass the validation, the FT devices are online.)

To see the FT device status from the client, select the client in the **Media and Device Management > Devices > SAN Clients** window in the **NetBackup Administration Console**.

The check driver messages in the nbftclnt log file are similar to the following:

```
VerifyCheckConditions:failed on <OS Device Name> - check driver
VerifyCheckConditions:failed on <OS Device Name>; <System Error
Message>
```

The following describes the variables in the messages:

- *OS Device Name* is the device name the SAN Client uses to open the OS device driver.
- *System Error Message* can be any OS-dependent system error message for a failure that is associated with the request.

See [“Viewing Fibre Transport logs”](#) on page 77.

If validation fails, install the correct operating system version, operating system patches, or driver version.

For supported kernel and driver levels, see the *NetBackup Release Notes*.

SAN client does not select Fibre Transport

If either of the following are true, a SAN client may not be able to select Fibre Transport during a backup or restore operation:

- The FT media server host operating system `domainname` command returns fully qualified domain names and NetBackup is configured to use short names.
- The FT media server host operating system `domainname` command fails because of: DNS, NIS, or network problems and NetBackup is configured to use fully qualified domain names.

If so, the backup or restore may fail or it may occur over the LAN rather than the SAN.

To work around this problem, add an alias for the FT media server to the EMM database.

The following are the command syntaxes:

- To add a short name alias:

```
nbemmcmd -machinealias -addalias -alias shortservername
-machinename servername.fully.qualified -machinetype media
```

- To add a fully qualified domain name alias:

```
nbemmcmd -machinealias -addalias -alias
servername.fully.qualified -machinename shortservername
-machinetype media
```

Media server Fibre Transport device is offline

If NetBackup shows that a media server FT device is offline, the selected SAN client cannot detect the target mode driver on that media server. FT device status appears in the Media and Device Management > Devices > SAN Clients window of the NetBackup Administration Console. (An FT device represents the HBA target mode driver on a media server.)

An FT device may be offline because of the following:

- The `nbfdrv64` service on a media server is down. The `nbfdrv64` service manages the target mode drivers; if it is down, the FT device is not available.
- The physical connections between the SAN client and the SAN switch fail or were changed.
- SAN zoning changes removed either the media server or the SAN client from the zone.
- The SAN client failed the FT service validation.
See [“SAN client Fibre Transport service validation”](#) on page 85.

If all media server FT devices for a client are offline, troubleshoot in the following order:

- Verify that the SAN client FT service validation passes.
- Verify that the physical connections from the SAN client to the SAN switch are correct.
- Verify that the SAN zones are correct.
- Verify that the `nbfdrv64` service is active on each media server.

To determine if the `nbfdrv64` service is down, use the operating system process status command to examine the processes on the media server. Both `nbftsrvr` and `nbfdrv64` should be active.

See “[Stopping and starting Fibre Transport services](#)” on page 82.

If the services do not start, examine the log files for those services to determine why they do not start.

See “[Viewing Fibre Transport logs](#)” on page 77.

No Fibre Transport devices discovered

If a "No FT devices discovered" message appears in the NetBackup logs on the SAN client, the pass-through driver may not be configured on the SAN client.

For information about how to configure pass-through drivers, see the *NetBackup Device Configuration Guide*, available at the following URL:

<http://www.veritas.com/docs/DOC5332>

AIX Specific Configuration Details

This appendix includes the following topics:

- [AIX Reference Information](#)
- [Before you begin configuring NetBackup on AIX](#)
- [About AIX persistent naming support](#)
- [About configuring robotic control device files in AIX](#)
- [About device files for SAN Clients on AIX](#)
- [About configuring tape drive device files in AIX](#)

AIX Reference Information

The following information is specific to AIX. Certain devices, such as tape or robotic devices, have specific AIX configuration requirements. This AIX reference section contains relevant information.

Before you begin configuring NetBackup on AIX

Observe the following points when you configure the operating system:

- Verify that NetBackup supports your server platform and devices. Download the NetBackup hardware and operating system compatibility lists.
<http://www.netbackup.com/compatibility>
- Install and configure the IBM AIX Enhanced Device Driver (Atape device driver).

- Attach all peripherals and reboot the system before you configure the devices in NetBackup. When the computer is rebooted, AIX creates the device files for the attached peripherals.
- For many configuration steps, you can use the `smit` System Management Interface Tool. For more information, see the `smit(1)` man page.
- To verify that the devices are configured correctly, use `smit` and `/usr/sbin/lsdev` command.
- To obtain error and debug information about devices and robotic software daemons, the `syslogd` daemon must be active. See the AIX `syslogd(1)` man page for more information.

After you configure the hardware, add the robots and the drives to NetBackup.

About AIX persistent naming support

NetBackup requires that you enable persistent naming support for the AIX device files. Doing so ensures that the device targets and LUNs do not change after a system restart.

To enable persistent naming support, use the AIX SMIT utility or the `chdev` command to change the logical names of the devices. Change the logical names after the initial device configuration in AIX. For more information, see the IBM documentation.

About configuring robotic control device files in AIX

For IBM robotic libraries, Veritas supports the IBM AIX Enhanced Device Driver (Atape device driver) for use with NetBackup. NetBackup discovers the device files when you configure devices.

For information about the driver and how to configure device files, see the IBM documentation.

For robotic libraries other than IBM, Veritas recommends that you use an operating system other than AIX as the robotic control host.

About device files for SAN Clients on AIX

NetBackup SAN clients use tape drivers and SCSI pass-through methods for Fibre Transport traffic to NetBackup FT media servers. An AIX SAN Client that uses the standard tape driver can discover Fibre Transport targets on the FT media servers.

The media server FT devices appear as `ARCHIVE Python` tape devices during SCSI inquiry from the SAN client. However, they are not tape devices and do not appear as tape devices in NetBackup device discovery.

During system startup, the AIX `cfgmgr` command configures all the devices that are necessary to use the system. If a NetBackup SAN Client cannot discover the FT devices, you can configure the device files on the client manually. Use the same procedure that you use for tape devices.

About configuring tape drive device files in AIX

About non-QIC tape drives on AIX

Variable length block and fixed length block refer to how the operating system reads from and writes to a tape. Variable-mode devices allow more flexibility to read previously written tapes. Many tape devices can be accessed in either mode. NetBackup assumes variable length for non-quarter inch cartridge (QIC) drives.

For more information, see the `chdev(1)` and `smit(1)` man pages and the system management guide. The `smit` application is the most convenient way to change from fixed to variable-length-block devices manually.

Warning: For NetBackup, you must configure non-QIC tape drives as variable-length-block devices. Otherwise NetBackup can write data but may not be able to read it correctly. During a read, you may see a `not in tar` format error.

When you add a non-QIC tape drive to NetBackup, NetBackup issues the `chdev` command to configure the drive as a variable length block device. For reference, the following is the command that NetBackup uses to configure a drive for variable mode:

```
/usr/sbin/chdev -l Dev -a block_size=0
```

`Dev` represents the logical identifier for the drive (for example: `rmt0` or `rmt1`).

Therefore, you do not have to configure the drive manually for variable mode.

About no rewind device files on AIX

By default, NetBackup uses no rewind device files. These SCSI device files are in the `/dev` directory and have the following format:

```
/dev/rmtID.1
```

ID is the logical identifier assigned to the device by the system. The .1 extension specifies the no rewind, no retention on open device file.

Normally, AIX creates tape drive device files automatically at boot time. Alternatively, you can run the AIX `cfgmgr` command, which should create the device files. If they do not exist, you must create them for the tape drives.

Creating AIX no rewind device files for tape drives

NetBackup uses no rewind device files for tape drives and for NetBackup SAN Clients. During system startup, the AIX `cfgmgr` command configures all the devices that are necessary to use the system. If necessary, you can use the following procedure to check for and create a no rewind device file.

To check for and create a no rewind device file

- 1 Display the I/O controllers in the system by using the following command:

```
/usr/sbin/lsdev -C | grep I/O
```

The following sample output shows that SCSI controller 1 (00-01) has been assigned the logical identifier `scsi0`.

```
scsi0 Available 00-01 SCSI I/O Controller
```

- 2 Display the SCSI and Fibre Channel devices in the system by using the following command. For SCSI devices, use `scsi` for the *type*; for Fibre Channel Protocol devices, use `fcp` for the *type*.

```
/usr/sbin/lsdev -C -s type
```

The following example shows two disk drives and a tape drive:

```
hdisk0 Available 00-01-00-0,0 400 MB SCSI Disk Drive
hdisk1 Available 00-01-00-1,0 400 MB SCSI Disk Drive
rmt0 Available 00-01-00-3,0 Other SCSI Tape Drive
```

If the device files for the tape drives exist, they appear in the output as `rmt0`, `rmt1`, and so on. The previous example output shows `rmt0`.

- 3 If a device file does not exist for the wanted tape drive, create it by using the following command:

```
/usr/sbin/mkdev -c tape -s scsi -t ost -p controller -w id,lun
```

The following are the arguments for the command:

- *controller* is the logical identifier of the drive's SCSI adapter, such as `scsi0`, `fscsi0`, or `vscsi1`.

- *scsi_id* is the SCSI ID of the drive connection.
- *lun* is the logical unit number of the drive connection.

For example, the following command creates a device file for a non-IBM 8-mm drive connected to controller *scsi0* at SCSI address 5,0:

```
mkdev -c tape -s scsi -t ost -p scsi0 -w 5,0
```

- 4 To verify, display the SCSI device files by using the `lsdev` command, as follows:

```
/usr/sbin/lsdev -C -s scsi
hdisk0 Available 00-01-00-0,0 400 MB SCSI Disk Drive
hdisk1 Available 00-01-00-1,0 400 MB SCSI Disk Drive
rmt0 Available 00-01-00-3,0 Other SCSI Tape Drive
rmt1 Available 00-01-00-5,0 Other SCSI Tape Drive
```

The output shows that the *rmt1* device file was created.

- 5 If the device files do not exist on an FCP controller, use the following command to create them:

```
/usr/sbin/cfgmgr -l device
```

device is the controller number from step 1.

- 6 Ensure that the device is configured for variable-mode and extended file marks. Use the `chdev` command, as follows (*dev* is the logical identifier for the drive (for example, *rmt1*)).

```
/usr/sbin/chdev -l dev -a block_size=0
/usr/sbin/chdev -l dev -a extfm=yes
```

- 7 To configure the drive manually in NetBackup, enter the following device file pathname:

```
/dev/rmt1.1
```

Example of creating a no rewind device file

This topic provides an example of how to create a no rewind device file on AIX for NetBackup. Assume the device files for the wanted SCSI 8-mm tape drive (controller 1, SCSI ID 5) do not exist.

To create a no rewind device file for SCSI ID 5

- 1 Determine the logical identifier for the SCSI controller as follows:

```
/usr/sbin/lsdev -C -c adapter | grep SCSI
```

The following output shows that scsi0 is the logical name for SCSI controller 1:

```
scsi0 Available 00-01 SCSI I/O Controller
```

- 2 Determine if the device files exist for any device at SCSI ID 5.

```
/usr/sbin/lsdev -C -s scsi
```

The following output shows that some device files exist for tape and disk. However, a device files does not exist for the 8-mm tape drive at controller 1 (scsi0) and SCSI ID 5 (5,0):

```
hdisk0 Available 00-01-00-0,0 400 MB SCSI Disk Drive
hdisk1 Available 00-01-00-1,0 400 MB SCSI Disk Drive
rmt0 Available 00-01-00-3,0 Other SCSI Tape Drive
```

- 3 Create the device file by using the following command:

```
mkdev -c tape -t ost -s scsi -p scsi0 -w 5,0
```

- 4 Display the device files by issuing the following command:

```
/usr/sbin/lsdev -C -s scsi
hdisk0 Available 00-01-00-0,0 400 MB SCSI Disk Drive
hdisk1 Available 00-01-00-1,0 400 MB SCSI Disk Drive
rmt0 Available 00-01-00-3,0 Other SCSI Tape Drive
rmt1 Available 00-01-00-5,0 Other SCSI Tape Drive
```

- 5 To ensure that the tape device is configured for variable-mode and extended file marks, use the following commands:

```
chdev -l rmt1 -a block_size=0
chdev -l rmt1 -a extfm=yes
```

- 6 To configure the drive manually in NetBackup, enter the following device file pathname:

```
/dev/rmt1.1
```

HP-UX Specific Configuration Details

This appendix includes the following topics:

- [HP-UX Reference Information](#)
- [Before you begin configuring NetBackup on HP-UX](#)
- [About HP-UX device drivers for legacy device files](#)
- [About legacy robotic control device files](#)
- [About legacy tape drive device files](#)
- [About legacy pass-through paths for tape drives](#)
- [Creating device files for SAN Clients on HP-UX](#)
- [About configuring legacy device files](#)

HP-UX Reference Information

The following information is specific to HP-UX. Certain devices, such as tape or robotic devices, have specific HP-UX configuration requirements. This HP-UX reference section contains relevant information.

Before you begin configuring NetBackup on HP-UX

Observe the following points when you configure the operating system:

- To verify that the devices are configured correctly, use the HP-UX `sam` utility and the `ioscan -f` command.

About HP-UX device drivers for legacy device files

The following are the drivers supported:

- The `sctl` driver for robotic control.

About legacy robotic control device files

For SCSI robotic control, NetBackup can use the `/dev/sctl` device files. The device file names have the following format:

```
/dev/sctl/cCARDtTARGETlLUN c Major 0xII TL00
```

Where:

- *CARD* is the card instance number of the adapter.
- *TARGET* is the SCSI ID of the robotic control.
- *LUN* is the SCSI logical unit number (LUN) of the robot.
- *Major* is the character major number (from the `lsdev` command).
- *II* are two hexadecimal digits that represent the card instance number.
- *T* is a hexadecimal digit that represents the SCSI ID of robotic control.
- *L* is a hexadecimal digit that represents the SCSI LUN of the robotic control.

A library may have more than one robotic device. Each robotic device requires a device file.

About legacy tape drive device files

NetBackup requires the `/dev/rmt` device files to configure tape drives.

The device file names have the following format:

```
/dev/rmt/c#t#d#BESTnb
```

The following describe the device file names:

- *c#* is the card instance number.
- *t#* is the SCSI ID.
- *d#* is the device LUN.

- `BEST` indicates the highest density format and data compression the device supports.
- `n` indicates no rewind on close.
- `b` indicates Berkeley-style close.

The following are examples of tape drive device files:

```
/dev/rmt/c7t0d0BESTnb  
/dev/rmt/c7t1d0BESTnb  
/dev/rmt/c7t4d0BESTnb  
/dev/rmt/c7t5d0BESTnb
```

About legacy pass-through paths for tape drives

Although NetBackup requires the `/dev/rmt` device files to configure tape drives, NetBackup uses pass-through device files for drive access.

On media servers, NetBackup automatically creates pass-through device files if the appropriate `/dev/rmt` tape drive device files exist. NetBackup creates the pass-through device files in the `/dev/sct1` directory.

NetBackup does not modify or delete any existing pass-through paths.

NetBackup does not detect the type of adapter cards that are installed in the system. Therefore, NetBackup creates pass-through paths for tape drives connected to the adapter cards that do not support pass through. These pass-through paths do not cause problems.

Although NetBackup uses the pass-through device files during tape drive operations, you specify the `/dev/rmt` device files when you configure the drives in NetBackup. NetBackup then uses the appropriate pass-through device files.

Usually, you do not have to create pass-through paths for drives. However, instructions to do so are provided for reference.

NetBackup SAN clients require legacy pass-through device files.

Note: Pass-through paths are not supported on HP-PB adapters such as HP28696A - Wide SCSI or HP 28655A - SE SCSI.

Creating device files for SAN Clients on HP-UX

NetBackup SAN clients use tape drivers and SCSI pass-through methods for Fibre Transport traffic to NetBackup FT media servers. On HP-UX systems, NetBackup SAN clients require the `sctl` driver and pass-through tape drive device files.

The following table describes the tasks that create the device files. Before you create the device files, the NetBackup FT media server must be active and the SAN must be zoned correctly.

Table B-1 SAN Client device file tasks

Step	Action	Description
Step 1	If the <code>sctl</code> driver is not the default pass-through driver on your system, install and configure the <code>sctl</code> driver.	See the HP-UX <code>scsi_ctl(7)</code> man page.
Step 2	Create the pass-through paths required.	

The media server FT devices appear as `ARCHIVE Python` tape devices during SCSI inquiry from the SAN client. However, they are not tape devices and do not appear as tape devices in NetBackup device discovery.

You can use legacy device files for SAN client pass-through paths for Fibre Transport traffic to NetBackup media servers.

About configuring legacy device files

You can use legacy device files for the following:

- Robotic control using SCSI or Fibre Channel Protocol control.
 SCSI control includes Fibre Channel Protocol (FCP), which is SCSI over Fibre Channel. A robotic device in a library moves the media between storage slots and the drives in the library.
 See [“Creating legacy SCSI and FCP robotic controls on HP-UX”](#) on page 99.
- Tape drive read and write access.
 See [“About creating legacy tape drive device files”](#) on page 106.
 See [“Creating tape drive pass-through device files”](#) on page 106.
- SAN client pass-through paths for Fibre Transport traffic to NetBackup media servers.

Creating legacy SCSI and FCP robotic controls on HP-UX

You must create the robotic control device files for the `sctl` driver manually; they are not created automatically when the system boots.

Before you create the device files, you must do the following:

- Install and configure the `sctl` driver. For more information, see the HP-UX `scsi_ctl(7)` man page.
The `sctl` driver may be the default pass-through driver on your system. If so, you do not have to configure the kernel to use the `sctl` pass-through driver.
- Install and configure the `schgr` device driver. For more information, see the HP-UX `autochanger(7)` man page.
- Attach the devices.

Examples of how to create the device files are available.

See [“Example of how to create a sctl device file for SCSI \(PA-RISC\)”](#) on page 100.

See [“Example of how to create a sctl device file for FCP \(PA-RISC\)”](#) on page 102.

See [“Example of how to create sctl device files for FCP \(Itanium\)”](#) on page 104.

To create `sctl` device files

- 1 Invoke the `ioscan -f` command to obtain SCSI bus and robotic control information.
- 2 Examine the output for the card instance number and the SCSI ID and LUN of the robotic device, as follows:
 - The instance number of the card is in the I column of the output.
 - The `H/W Path` column of the changer output (`schgr`) includes the SCSI ID and LUN. Use the card's `H/W Path` value to filter the changer's `H/W Path` entry; the SCSI ID and the LUN remain.
- 3 Determine the character major number of the `sctl` driver by using the following command:

```
lsdev -d sctl
```

Examine the output for an entry that shows `sctl` in the Driver column.

- 4 Use the following commands to create the device file for the SCSI robotic control:

```
mkdir /dev/sctl  
cd /dev/sctl  
/usr/sbin/mknod cCARDtTARGETLUN c Major 0xIITL00
```

Where:

- *CARD* is the card instance number of the adapter.
- *TARGET* is the SCSI ID of the robotic control.
- *LUN* is the SCSI logical unit number (LUN) of the robot.
- *Major* is the character major number (from the `lsdev` command).
- *II* are two hexadecimal digits that represent the card instance number.
- *T* is a hexadecimal digit that represents the SCSI ID of robotic control.
- *L* is a hexadecimal digit that represents the SCSI LUN of the robotic control.

Example of how to create a sctl device file for SCSI (PA-RISC)

In this example, the following robots exist:

- An ADIC Scalar 100 library is on a SCSI bus with an instance number of 7, SCSI ID 2, and LUN 0.
- The robotic control for an IBM ULT3583-TL library is on the same SCSI bus at SCSI ID 3 and LUN 0.

To create SCSI robotic device files for HP-UX PA-RISC

1 Invoke the `ioscan -f` command, as follows:

```
ioscan -f
Class      I  H/W Path      Driver  S/W State H/W Type  Description
=====
ext_bus    7  0/7/0/1       c720    CLAIMED  INTERFACE SCSI C896 Fast Wide LVD
target    10 0/7/0/1.0      tgt     CLAIMED  DEVICE
tape      65 0/7/0/1.0.0    stape   CLAIMED  DEVICE    QUANTUM SuperDLT1
target    11 0/7/0/1.1      tgt     CLAIMED  DEVICE
tape      66 0/7/0/1.1.0    stape   CLAIMED  DEVICE    QUANTUM SuperDLT1
target    12 0/7/0/1.2      tgt     CLAIMED  DEVICE
autoch    14 0/7/0/1.2.0    schgr   CLAIMED  DEVICE    ADIC Scalar 100
target    13 0/7/0/1.3      tgt     CLAIMED  DEVICE
autoch    19 0/7/0/1.3.0    schgr   CLAIMED  DEVICE    IBM ULT3583-TL
target    14 0/7/0/1.4      tgt     CLAIMED  DEVICE
tape      21 0/7/0/1.4.0    atdd    CLAIMED  DEVICE    IBM ULT3580-TD1
target    15 0/7/0/1.5      tgt     CLAIMED  DEVICE
tape      19 0/7/0/1.5.0    atdd    CLAIMED  DEVICE    IBM ULT3580-TD1
```

2 Examine the output for the card instance number and the SCSI ID and LUN of the robotic device, as follows:

The card H/W Path is 0/7/0/1; the card instance number (I column) is 7. Apply the H/W Path value as a mask. The ADIC robotic device (`schgr`) is at SCSI ID 2, LUN 0 on this bus. The IBM robotic device (`schgr`) is at SCSI ID 3, LUN 0 on this bus.

- 3 Determine the character major number of the `sctl` driver by using the following command:

```
lsdev -d sctl
Character      Block      Driver      Class
   203         -1         sctl        ctl
```

The output from this command shows that the character major number for the `sctl` driver is 203.

- 4 The commands to create the device files follow. For the ADIC robot, the card instance number is 7, the target is 2, and the LUN is 0. For the IBM robot, the card instance number is 7, the SCSI ID is 3, and the LUN is 0.

```
cd /dev/sctl
/usr/sbin/mknod c7t210 c 203 0x072000
/usr/sbin/mknod c7t310 c 203 0x073000
```

If you add the robots to NetBackup manually, you specify the following for ADIC robotic control and IBM robotic control respectively:

```
/dev/sctl/c7t210
/dev/sctl/c7t310
```

Example of how to create a `sctl` device file for FCP (PA-RISC)

The following example shows how create a `sctl` device file for an HP VLS9000 robot. NetBackup uses the device file for robotic control.

To create an FCP robotic device file for HP-UX PA-RISC

- 1 Invoke the `ioscan -f` command. The following output example is edited for readability:

```
ioscan -f
Class  I  H/W Path                Driver  S/W State  H/W Type  Description
=====
fc      0  0/2/0/0                td      CLAIMED   INTERFACE HP Tachyon XL2 Fibre
                                Channel Mass Storage
                                Adapter
fcp     4  0/2/0/0.10            fcp     CLAIMED   INTERFACE FCP Domain
ext_bus 6  0/2/0/0.10.11.255.0    fcpdev  CLAIMED   INTERFACE FCP Device Interface
target  5  0/2/0/0.10.11.255.0.0  tgt     CLAIMED   DEVICE
autoch  2  0/2/0/0.10.11.255.0.0.0 schgr   CLAIMED   DEVICE      HP      VLS
tape    5  0/2/0/0.10.11.255.0.0.1 stape   CLAIMED   DEVICE      HP      Ultrium 4-SCSI
tape    6  0/2/0/0.10.11.255.0.0.2 stape   CLAIMED   DEVICE      HP      Ultrium 4-SCSI
tape    7  0/2/0/0.10.11.255.0.0.3 stape   CLAIMED   DEVICE      HP      Ultrium 4-SCSI
```

- 2 Examine the output for the card instance number and the SCSI ID and LUN of the robotic device. In this example, the interface card instance number (the `I` column) is 6. If you use the card's `H/W Path` value as a mask (`0/2/0/0.10.11.255.0`), you see the following:
 - An HP VLS9000 robot is at SCSI ID 0, LUN 0.
 - Three Ultrium 4-SCSI drives are at SCSI ID 0 and LUN 1, LUN 2, and LUN 3.

- 3 Determine the character major number of the `sctl` driver by using the `lsdev` command, as follows:

```
lsdev -d sctl
Character      Block      Driver      Class
   203         -1         sctl        ctl
```

The output from this command shows that the character major number for the `sctl` driver is 203.

- 4 The commands to create the device file for the HP VLS9000 robotic control are as follows. The card instance number is 6, the target is 0, and the LUN is 0.

```
cd /dev/sctl
/usr/sbin/mknod c6t010 c 203 0x060000
```

If you add the robot to NetBackup manually, specify the following pathname for robotic control:

```
/dev/sctl/c6t010
```

Example of how to create `sctl` device files for FCP (Itanium)

With Fibre Channel, the hardware paths are longer than with SCSI.

In this example, the following devices are attached to the host.

- An HP EML E-Series robot with four HP drives (two LTO2 and two LTO3 drives). A separate path exists for each drive pair. The robotic control is through card instance 12 (0/4/1/1.2.12.255.0).
- An HP VLS 6000 robot with six drives. The robot is partitioned into two virtual libraries, three Quantum SDLT320 drives in one library and three HP LTO3 drives in the other library. Separate robotic control exists for each library.

To create FCP robotic device files for HP-UX Itanium

- 1 Invoke the `ioscan -f` command. The following is a command output excerpt that shows the Fibre Channel devices on a host:

```
ext_bus 4 0/4/1/1.2.10.255.0 fcd_vbus CLAIMED INTERFACE FCP Device Interface
target 7 0/4/1/1.2.10.255.0.0 tgt CLAIMED DEVICE
tape 18 0/4/1/1.2.10.255.0.0.0 stape CLAIMED DEVICE HP Ultrium 3-SCSI
tape 20 0/4/1/1.2.10.255.0.0.1 stape CLAIMED DEVICE HP Ultrium 3-SCSI
ext_bus 13 0/4/1/1.2.11.255.0 fcd_vbus CLAIMED INTERFACE FCP Device Interface
target 8 0/4/1/1.2.11.255.0.0 tgt CLAIMED DEVICE
autoch 4 0/4/1/1.2.11.255.0.0.0 schgr CLAIMED DEVICE HP VLS
tape 22 0/4/1/1.2.11.255.0.0.1 stape CLAIMED DEVICE QUANTUM SDLT320
tape 23 0/4/1/1.2.11.255.0.0.2 stape CLAIMED DEVICE QUANTUM SDLT320
tape 24 0/4/1/1.2.11.255.0.0.3 stape CLAIMED DEVICE QUANTUM SDLT320
autoch 5 0/4/1/1.2.11.255.0.0.4 schgr CLAIMED DEVICE HP VLS
tape 25 0/4/1/1.2.11.255.0.0.5 stape CLAIMED DEVICE HP Ultrium 3-SCSI
tape 26 0/4/1/1.2.11.255.0.0.6 stape CLAIMED DEVICE HP Ultrium 3-SCSI
tape 27 0/4/1/1.2.11.255.0.0.7 stape CLAIMED DEVICE HP Ultrium 3-SCSI
ext_bus 12 0/4/1/1.2.12.255.0 fcd_vbus CLAIMED INTERFACE FCP Device Interface
target 6 0/4/1/1.2.12.255.0.0 tgt CLAIMED DEVICE
autoch 1 0/4/1/1.2.12.255.0.0.0 schgr CLAIMED DEVICE HP EML E-Series
tape 19 0/4/1/1.2.12.255.0.0.1 stape CLAIMED DEVICE HP Ultrium 2-SCSI
tape 21 0/4/1/1.2.12.255.0.0.2 stape CLAIMED DEVICE HP Ultrium 2-SCSI
```

- 2 Examine the output for the card instance number and the SCSI ID and LUN of the robotic device.

In this example, the following devices are attached to this host:

- The robotic control for the HP EML E-Series robot is through card instance 12 (0/4/1/1.2.12.255.0). Two of the drives are accessed through the same path, and the other two are accessed through card instance 4 (0/4/1/1.2.10.255.0).
- The robotic controls for the HP VLS 6000 robot partitions are through card instance 13. Robotic control for one partition is at SCSI ID 0 and LUN 0. Robotic control for the other partition is at SCSI ID 0 and LUN 4.

- 3 Determine the character major number of the `sctl` driver by using the following command:

```
lsdev -d sctl
Character      Block      Driver      Class
   203         -1         sctl        ctl
```

The output from this command shows that the character major number for the `sctl` driver is 203.

- 4 The commands to create the devices file for the robotic controls are as follows:

```
cd /dev/sctl
/usr/sbin/mknod c12t010 c 203 0x0c0000
/usr/sbin/mknod c13t010 c 203 0x0d0000
/usr/sbin/mknod c13t014 c 203 0x0d0400
```

If you add the robots to NetBackup manually, you specify the following pathnames for robotic control. The first device file is for the HP EML E-Series robot. The second and third device files are for the VLS 6000 robot (two robotic devices).

```
/dev/sctl/c12t010
/dev/sctl/c13t010
/dev/sctl/c13t014
```

About creating legacy tape drive device files

By default, HP-UX creates tape drive device files when the system is booted. However, the tape driver must be installed and configured, and the devices must be attached and operational.

Alternatively, you can create tape drive device files manually. To do so, use either the HP-UX System Administration Manager (SAM) utility or the `insf(1M)` command. For information, see the HP-UX documentation.

Creating tape drive pass-through device files

On media servers, NetBackup creates pass-through paths for tape drives automatically. However, you can create them manually.

NetBackup also uses the tape drive pass-through device files for SAN Client.

Use one of the following two procedures:

- Create pass-through tape drive device files
See [“To create pass-through tape drive device files”](#) on page 107.

- Create SAN client pass-through device files
 See [“To create SAN client legacy pass-through device files”](#) on page 109.

To create pass-through tape drive device files

- 1 Determine the devices that are attached to the SCSI bus by using the HP-UX `ioscan -f` command, as follows:

```
ioscan -f
Class      I  H/W Path      Driver S/W State  H/W Type  Description
=====
ext_bus    7  0/7/0/        c720  CLAIMED  INTERFACE  SCSI C896 Fast Wide LVD
target    10  0/7/0/1.0     tgt   CLAIMED  DEVICE
tape       65  0/7/0/1.0.0   stape CLAIMED  DEVICE      QUANTUM SuperDLT1
target    11  0/7/0/1.1     tgt   CLAIMED  DEVICE
tape       66  0/7/0/1.1.0   stape CLAIMED  DEVICE      QUANTUM SuperDLT1
target    12  0/7/0/1.2     tgt   CLAIMED  DEVICE
autoch    14  0/7/0/1.2.0   schgr CLAIMED  DEVICE      ADIC Scalar 100
target    13  0/7/0/1.3     tgt   CLAIMED  DEVICE
autoch    19  0/7/0/1.3.0   schgr CLAIMED  DEVICE      IBM ULT3583-TL
target    14  0/7/0/1.4     tgt   CLAIMED  DEVICE
tape       21  0/7/0/1.4.0   atdd  CLAIMED  DEVICE      IBM ULT3580-TD1
target    15  0/7/0/1.5     tgt   CLAIMED  DEVICE
tape       19  0/7/0/1.5.0   atdd  CLAIMED  DEVICE      IBM ULT3580-TD1
```

This example output shows the following:

- The robotic control for an ADIC Scalar 100 library is on a SCSI bus with an instance number of 7. The SCSI ID is 2, and the LUN is 0. The robotic control for an IBM ULT3583-TL library is on the same SCSI bus at SCSI ID 3 and LUN 0.
- The ADIC library contains two Quantum Super DLT drives. One has a SCSI ID of 0 and a LUN of 0. The other has a SCSI ID of 1 and a LUN of 0.
- The IBM library contains two IBM Ultrium LTO drives. One has a SCSI ID of 4 and a LUN of 0. The other has a SCSI ID of 5 and a LUN of 0. Use the IBM `atdd` driver when you configure IBM tape drives on HP-UX. Configure `atdd` and BEST device paths according to the IBM driver documentation. Do not configure `atdd` for robotic control of IBM robots. For

the latest recommended `atdd` driver version from IBM, check the Veritas support Web site.

2 Create the pass-through device files for the tape drives, as follows:

```
cd /dev/sctl  
/usr/sbin/mknod c7t010 c 203 0x070000  
/usr/sbin/mknod c7t110 c 203 0x071000  
/usr/sbin/mknod c7t410 c 203 0x074000  
/usr/sbin/mknod c7t510 c 203 0x075000
```

When you use the HP-UX `mknod` command for tape drives, the target is the SCSI ID of the tape drive. It is not the SCSI ID of the robotic control.

The previous commands create the following pass-through device files.

```
/dev/sctl/c7t010  
/dev/sctl/c7t110  
/dev/sctl/c7t410  
/dev/sctl/c7t510
```

Although the pass-through device files for tape drives are used during NetBackup operation, they are not used during NetBackup configuration. During NetBackup tape drive configuration, use the following device files to configure the tape drives.

```
/dev/rmt/c7t0d0BESTnb  
/dev/rmt/c7t1d0BESTnb  
/dev/rmt/c7t4d0BESTnb  
/dev/rmt/c7t5d0BESTnb
```

To create SAN client legacy pass-through device files

- 1 Determine the devices that are attached to the SCSI bus by using the HP-UX `ioscan -f` command, as follows:

```
ioscan -f
Class      I  H/W Path                Driver      S/W State   H/W Type   Description
=====
ext_bus    9  0/3/1/0.1.22.255.0     fcd_vbus   CLAIMED     INTERFACE  FCP Device Interface
target     4  0/3/1/0.1.22.255.0.0   tgt        CLAIMED     DEVICE     ARCHIVE Python
tape       6  0/3/1/0.1.22.255.0.0.0 stape      CLAIMED     DEVICE     ARCHIVE Python
tape       7  0/3/1/0.1.22.255.0.0.1 stape      CLAIMED     DEVICE     ARCHIVE Python
```

This example output shows that the instance number of the Fibre Channel HBA is 9. It also shows that the target mode drivers on the Fibre Transport media server appear as `ARCHIVE Python` devices. One has a SCSI ID of 0 and a LUN of 0; the other has a SCSI ID of 0 and a LUN of 1.

From HP-UX 11i V3, agile device view is recommended and preferred. If the `ioscan -f` command does not list any `ARCHIVE Python` device, refer to the *To create SAN client agile pass-through device files (HP-UX 11i V3 and later versions)* section to use agile device addressing method.

- 2 Determine the character major number of the `sctl` driver by using the following command:

```
lsdev -d sctl
Character  Block  Driver  Class
203        -1     sctl    ctl
```

The output from this command shows that the character major number for the `sctl` driver is 203.

- 3 Create the pass-through device files, as follows:

```
cd /dev/sctl
/usr/sbin/mknod c9t010 c 203 0x090000
/usr/sbin/mknod c9t011 c 203 0x090100
```

The following describes the device file name:

- `c9` defines the instance number of the interface card.
- `t0` defines the SCSI ID (the target).

- `l1` defines the LUN (the first character is the letter “l”).

4 Verify that the device files were created, as follows:

```
# ls -l /dev/sct1
total 0
crw-r--r--  1 root      sys      203 0x090000 Nov  1 13:19 c9t010
crw-r--r--  1 root      sys      203 0x090100 Nov  1 13:19 c9t011
```

To create SAN client agile pass-through device files (HP-UX 11i V3 and later versions)

- 1 Determine the devices instance number, SCSI number and `lun` number by using the HP-UX `ioscan -kCtape -P wwid` command as follows:

```
bash-4.4# ioscan -kCtape -P wwid
Class      I  H/W Path  wwid
=====
tape       133 64000/0xfa00/0xa0 SYMANTECFATPIPE 0.0      limbo.com
tape       142 64000/0xfa00/0xa9 SYMANTECFATPIPE 0.1      limbo.com
```

Only the devices with the `SYMANTECFATPIPE` keyword in the `wwid` field are the devices to look for. This example output shows that the instance number of the SAN client specific tapes are 133 and 142. Based on two numbers following the `SYMANTECFATPIPE` keyword, they also show that the SCSI number of device instance 142 is 0 and the `lun` number is 1. In the same way, the SCSI number of device instance 133 is 0 and the `lun` number is 0.

- 2 Create the pass-through device files in the `/dev/sctl/` directory as follows:

```
#cd /dev/sctl
#mksf -d estape -P -I 133 -v -r /dev/sctl/c133t010
making /dev/sctl/c133t010 c 12 0x0000a0
#mksf -d estape -P -I 142 -v -r /dev/sctl/c142t011
making /dev/sctl/c142t011 c 12 0x0000a9
```

Option `-I` is used to specify the instance number. Instances number are listed with the `ioscan` command in step 1.

The last part of the command `mksf` is an absolute name of the pass-through device.

`/dev/sctl/` is the path where the pass-through device files must exist.

`c142` defines the instance number of the tape device. `t0` defines the SCSI ID (the target). `11` defines the LUN (the first character is the letter "l").

- 3 Verify that the device files were created using the following command:

```
bash-4.4# ls -l /dev/sctl
total 0
crw-r----- 1 bin      sys      12 0x0000a0 Jun 29 12:33 c133t010
crw-r----- 1 bin      sys      12 0x0000a9 Jun 30 09:39 c142t011
```

Index

A

- activity
 - viewing SAN Client logs 77
- AIX
 - configuring robotic control device files for IBM robots 90
 - introduction 89
 - smit tool 90
 - tape drive configuration
 - make device files 91
 - variable mode devices 91
- Always property in Fibre Transport host properties 63
- Always property in SAN Client Usage Preferences 66
- atdd driver
 - HP-UX 108

C

- chdev command 91
- cluster
 - about SAN Clients in clusters 16
 - configuring SAN clients in a cluster 55
- configuration guidelines
 - HP-UX 95
- configuring
 - legacy device files 98
 - robotic control device files for IBM robots in AIX 90
- creating
 - legacy SCSI and FCP robotic controls on HP-UX 99
 - legacy tape drive device files 106
 - no rewind device files for tape drives 92
 - sctl device file for FCP (Itanium) 104
 - sctl device file for FCP (PA-RISC) 102
 - sctl device file for SCSI (PA-RISC) 100
 - tape drive pass-through device files 106
- creating device files
 - for SAN clients on AIX 90
 - for SAN clients on HP-UX 98

D

- deployment planning 12
- device drivers
 - for legacy device files 96
- device files
 - creating for SAN clients on AIX 90
 - creating for SAN clients on HP-UX 98
 - creating no rewind 92
 - for legacy tape drives 96
 - no rewind 91
- disabling an FT media server 73–74

E

- examples
 - no rewind device file 93

F

- Fail property in Fibre Transport host properties 63
 - Fail property in SAN client usage preferences 66
 - Fibre Channel
 - HP-UX configuration example 102, 104
 - Fibre Transport
 - about Fibre Transport media servers 10
 - restores 17
 - viewing jobs details 69
 - viewing logs 77
 - viewing traffic information 70
 - Fibre Transport (FT)
 - host properties 60
 - firewalls
 - about configuring for SAN clients 52
 - fixed length block 91
 - FlashBackup restores
 - over Fibre Transport 17
 - FT media server
 - disabling 73–74
- ## H
- HP-UX
 - configuration guidelines 95

HP-UX (continued)

- creating legacy SCSI and FCP robotic controls 99
- SCSI robotic controls 96

Hyper-V 16

J

job ID search in unified logs 82

L

- legacy device files
 - configuring 98
 - device drivers supported 96
- legacy pass-through paths
 - for tape drives 97
- legacy tape drive device files
 - creating 106
- legacy tape drives
 - device file names 96
- logging
 - originator IDs 77
 - viewing logs 77

M

Maximum concurrent FT connections property in Fibre Transport host properties 62

N

- nbhba driver
 - removing 73–74
- Never property in Fibre Transport host properties 63
- Never property in SAN client usage preferences 66
- no rewind device file example 93
- no rewind device files 91
 - creating 92

O

- operational notes 13
- originator IDs 77

P

- Preferred property in Fibre Transport host properties 62
- Preferred property in SAN Client Usage Preferences 66

R

- removing
 - FT media server 73–74
 - removing an FT media server 73–74
- restores over Fibre Transport 17
- robotic control device files
 - for IBM robots in AIX 90
- robotic controls
 - SCSI
 - HP-UX 96

S

- SAN Client
 - configuring usage properties 64
 - viewing jobs details 69
- SAN client usage preferences
 - Always 66
 - Fail 66
 - Never 66
 - Preferred 66
 - Use defaults from the primary server
 - configuration 65
- SAN clients
 - about 10
 - configuring drivers on AIX 90
 - configuring drivers on HP-UX 98
- schgr device driver
 - HP-UX 99
- SCSI
 - robotic control
 - HP-UX 96
- sctl device file
 - creating for FCP (Itanium) 104
 - creating for FCP (PA-RISC) 102
 - creating for SCSI (PA-RISC) 100
- smit command 91

T

- tape drive configuration
 - on AIX
 - make device files 91
- tape drive pass-through device files
 - creating 106
- tape drives
 - creating no rewind device files 92
 - legacy pass-through paths 97
- target mode driver
 - removing 73–74

U

- unified logging 78
 - format of files 79
- Use defaults from the primary server configuration property 65
- Use defaults from the primary server configuration property in Fibre Transport host properties 62

V

- variable length block 91
- variable-mode devices
 - on AIX 91
- viewing Fibre Transport logs 77
- vxlogview command 79
 - with job ID option 82

W

- Windows Hyper-V 16