

# Job Management Partner 1/Software Distribution Administrator Kit

Description and Operator's Guide

3020-3-S84-30(E)

## ■ Relevant program products

P-2642-1B97 Job Management Partner 1/Software Distribution Administrator Kit version 09-51 (for Windows 8, Windows Server 2012, Windows 7, Windows Server 2008, Windows Vista, Windows Server 2003, Windows XP Professional, and Windows 2000)

## ■ Trademarks

Internet Explorer is either a registered trademark or trademark of Microsoft Corporation in the United States and/or other countries.

Microsoft is either a registered trademark or a trademark of Microsoft Corporation in the United States and/or other countries.

Microsoft, and Hyper-V are either registered trademarks or trademarks of Microsoft Corporation in the United States and/or other countries.

Pentium is a trademark of Intel Corporation in the United States and other countries.

UNIX is a registered trademark of The Open Group in the United States and other countries.

Visual Test is a product name of Rational Software Corporation in the United States.

Windows is either a registered trademark or a trademark of Microsoft Corporation in the United States and/or other countries.

Windows NT is either a registered trademark or a trademark of Microsoft Corporation in the United States and/or other countries.

Windows Server is either a registered trademark or a trademark of Microsoft Corporation in the United States and/or other countries.

Windows Vista is either a registered trademark or a trademark of Microsoft Corporation in the United States and/or other countries.

Other product and company names mentioned in this document may be the trademarks of their respective owners. Throughout this document Hitachi has attempted to distinguish trademarks from descriptive terms by writing the name with the capitalization used by the manufacturer, or by writing the name with initial capital letters. Hitachi cannot attest to the accuracy of this information. Use of a trademark in this document should not be regarded as affecting the validity of the trademark.

## ■ Restrictions

Information in this document is subject to change without notice and does not represent a commitment on the part of Hitachi. The software described in this manual is furnished according to a license agreement with Hitachi. The license agreement contains all of the terms and conditions governing your use of the software and documentation, including all warranty rights, limitations of liability, and disclaimers of warranty.

Material contained in this document may describe Hitachi products not available or features not available in your country.

No part of this material may be reproduced in any form or by any means without permission in writing from the publisher.

Printed in Japan.

## ■ Issued

June 2013: 3020-3-S84-30(E)

## ■ Copyright

All Rights Reserved. Copyright (C) 2009, 2013, Hitachi, Ltd.

## Summary of amendments

The following table lists changes in this manual (3020-3-S84-30(E)) and product changes related to this manual.

Changes	Location
Windows 8 and Windows Server 2012 have been added as applicable operating systems.	2.1.2, 2.2.1, 3.2.1, 3.3.12, 4.1, 4.2.2, 4.2.3, 4.2.5, 4.3.2

In addition to the above changes, minor editorial corrections have been made.



# Preface

---

This manual describes the facilities and usage of program product Job Management Partner 1/Software Distribution Administrator Kit.

This manual is part of a related set of manuals for *JP1/Software Distribution for Windows*. The manuals in the set, including this manual, are listed below. Read the applicable manual according to your need.

*Job Management Partner 1/Software Distribution Description and Planning Guide*, for Windows systems

Read this manual first.

This manual provides an overview of JP1/Software Distribution, describes its functionality, and gives typical examples of configuration and use. It also describes the installation procedure for JP1/Software Distribution, and covers matters that need to be considered for installation.

*Job Management Partner 1/Software Distribution Setup Guide*, for Windows systems

This manual describes the procedures for installing and setting up JP1/Software Distribution, configuring the database, and managing the system configuration.

*Job Management Partner 1/Software Distribution Administrator's Guide Volume 1*, for Windows systems

This manual provides detailed information about the managing server functions and their use, including the distribution of software, the acquisition and management of inventory information, and the collection of files.

This manual also describes operations at a client.

*Job Management Partner 1/Software Distribution Administrator's Guide Volume 2*, for Windows systems

This manual describes how to link JP1/Software Distribution with other products, and how to take corrective action if a problem has occurred. This manual also describes the functions of the Windows 8, Windows Server 2012, Windows 7, Windows Server 2008, and Windows Vista Edition JP1/Software Distribution Client.

*Job Management Partner 1/Software Distribution Automatic Installation Tool Description and Reference*, for Windows systems

This manual describes how to create AIT files and recorder files that are required for packaging non-Hitachi software.

*Job Management Partner 1/Software Distribution Administrator Kit Description and Operator's Guide*

This manual describes JP1/Software Distribution Administrator Kit, which is used for automatically installing JP1/Software Distribution Client.

*Job Management Partner 1/Remote Control Description and Operator's Guide*

This manual describes the remote control facility of JP1/Remote Control and JP1/Software Distribution.

Note

In this manual, *JP1* is an abbreviation for *Job Management Partner 1*.

## ■ Intended readers

This manual is intended for system administrators who want to perform a new installation of JP1/Software Distribution. The readers are required to have basic knowledge about JP1/Software Distribution and Windows.

## ■ Related publications

This manual is part of a related set of manuals. The manuals in the set are listed below (with the manual numbers):

- *Job Management Partner 1/Software Distribution Description and Planning Guide* (3020-3-S79(E)), for Windows systems
- *Job Management Partner 1/Software Distribution Setup Guide* (3020-3-S80(E)), for Windows systems
- *Job Management Partner 1/Software Distribution Administrator's Guide Volume 1*(3020-3-S81(E)), for Windows systems
- *Job Management Partner 1/Software Distribution Administrator's Guide Volume 2* (3020-3-S82(E)), for Windows systems
- *Job Management Partner 1/Software Distribution Automatic Installation Tool Description and Reference* (3020-3-S83(E)), for Windows systems
- *Job Management Partner 1/Remote Control Description and Operator's Guide* (3020-3-S87(E))

Refer to these manuals when necessary.

- *JP1 Version 6 Job Management Partner 1/Software Distribution Description and System Setup* (3020-3-927(E))
- *JP1 Version 7i Job Management Partner 1/Software Distribution Description and System Setup* (3020-3-G31(E)), for Windows systems

In this manual, *Job Management Partner 1/Software Distribution Description and System Setup* is generically used, referring to *JP1 Version 6 Job Management Partner 1/Software Distribution Description and System Setup* and *JP1 Version 7i Job Management Partner 1/Software Distribution Description and System Setup*, for Windows systems.

## ■ About online help

JP1/Software Distribution Administrator Kit provides online help which has the same contents as this manual. The online help allows you to search for the desired item from the full text in the manual.

You can start the online help by choosing the **Help** button in either the Startup Kit dialog box or the Create or Edit Installation Set dialog box. The online help is available on a machine on which Microsoft Internet Explorer 5.01 or a later version is installed.

## ■ Conventions: Abbreviations for product names

This manual uses the following abbreviations for the names of products related to JP1/Software Distribution:

Abbreviation		Full name or meaning
JP1/Software Distribution	JP1/Software Distribution Client	Job Management Partner 1/Software Distribution Client <sup>#</sup>
	JP1/Software Distribution Manager	Job Management Partner 1/Software Distribution Manager
	JP1/Software Distribution SubManager	Job Management Partner 1/Software Distribution SubManager
JP1/Remote Control		Job Management Partner 1/Remote Control Agent
		Job Management Partner 1/Remote Control Manager
Windows 8, Windows Server 2012, Windows 7, Windows Server 2008, and Windows Vista Edition JP1/Software Distribution Client		JP1/Software Distribution Client for Windows 8, Windows Server 2012, Windows 7, Windows Server 2008, and Windows Vista

#

JP1/Software Distribution Client 08-00 and later versions allow you to select whether JP1/Software Distribution Client will be used as a relay system or a client during installation. In this manual, *JP1/Software Distribution Client (Relay System)* indicates JP1/Software Distribution Client that is used as a relay system.

This manual uses the following abbreviations for the names of other products:

Abbreviation		Full name or meaning
AMT		Intel(R) Active Management Technology
Microsoft Internet Explorer		Microsoft(R) Internet Explorer
		Windows(R) Internet Explorer(R)
Pentium		Intel Pentium(R)
UNIX		UNIX(R)
Windows	Windows 2000	Windows 2000 Advanced Server
		Microsoft(R) Windows(R) 2000 Advanced Server Operating System

Abbreviation		Full name or meaning	
Windows	Windows 2000	Windows 2000 Professional	Microsoft(R) Windows(R) 2000 Professional Operating System
		Windows 2000 Server	Microsoft(R) Windows(R) 2000 Server Operating System
	Windows 7		Microsoft(R) Windows(R) 7 Enterprise
			Microsoft(R) Windows(R) 7 Professional
			Microsoft(R) Windows(R) 7 Ultimate
	Windows 8		Microsoft(R) Windows(R) 8
			Microsoft(R) Windows(R) 8 Enterprise
			Microsoft(R) Windows(R) 8 Pro
	Windows 95		Microsoft(R) Windows(R) 95 Operating System
	Windows 98		Microsoft(R) Windows(R) 98 Operating System
	Windows Me		Microsoft(R) Windows(R) Millennium Edition Operating System
	Windows NT 4.0	Windows NT Server 4.0	Microsoft(R) Windows NT(R) Server Network Operating System Version 4.0
		Windows NT Workstation 4.0	Microsoft(R) Windows NT(R) Workstation Operating System Version 4.0
	Windows Server 2003	Windows Server 2003 Enterprise Edition	Microsoft(R) Windows Server(R) 2003 R2, Enterprise Edition
			Microsoft(R) Windows Server(R) 2003, Enterprise Edition
		Windows Server 2003 Standard Edition	Microsoft(R) Windows Server(R) 2003 R2, Standard Edition
			Microsoft(R) Windows Server(R) 2003, Standard Edition
	Windows Server 2008		Microsoft(R) Windows Server(R) 2008 Datacenter
			Microsoft(R) Windows Server(R) 2008 Datacenter without Hyper-V(R)
			Microsoft(R) Windows Server(R) 2008 Enterprise
		Microsoft(R) Windows Server(R) 2008 Enterprise without Hyper-V(R)	
		Microsoft(R) Windows Server(R) 2008 Standard	
		Microsoft(R) Windows Server(R) 2008 Standard without Hyper-V(R)	
		Microsoft(R) Windows Server(R) 2008 R2 Datacenter	
		Microsoft(R) Windows Server(R) 2008 R2 Enterprise	

Abbreviation		Full name or meaning	
Windows	Windows Server 2008	Microsoft(R) Windows Server(R) 2008 R2 Standard	
	Windows Server 2012	Microsoft(R) Windows Server(R) 2012 Datacenter	
		Microsoft(R) Windows Server(R) 2012 Standard	
	Windows Vista	Microsoft(R) Windows Vista(R) Business	
		Microsoft(R) Windows Vista(R) Enterprise	
		Microsoft(R) Windows Vista(R) Ultimate	
	Windows XP	Windows XP Home Edition	Microsoft(R) Windows(R) XP Home Edition Operating System
		Windows XP Professional	Microsoft(R) Windows(R) XP Professional Operating System

■ **Conventions: Acronyms**

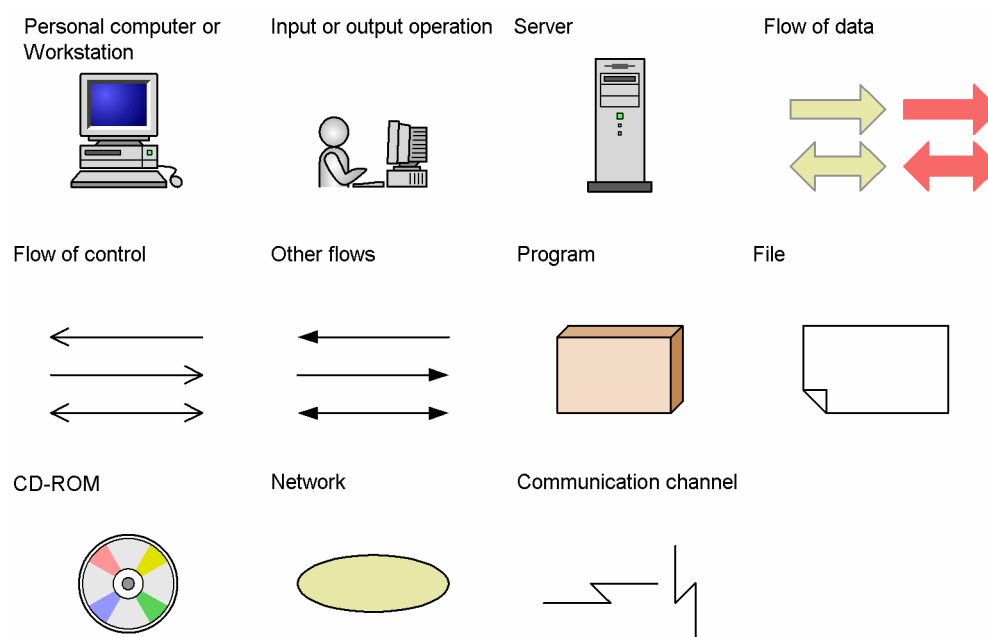
This manual also uses the following acronyms:

Acronym	Full name or meaning
CD-ROM	Compact Disc Read Only Memory
CPU	Central Processing Unit
FTP	File Transfer Protocol
HTML	Hypertext Markup Language
ID	Identifier
IP	Internet Protocol
LAN	Local Area Network
OS	Operating System
PC	Personal Computer
WAN	Wide Area Network
WS	Workstation
WWW	World Wide Web

■ **Conventions: Diagrams**

This manual uses the following conventions in diagrams:





## ■ Conventions: Fonts and symbols

The following table explains the fonts used in this manual:

Font	Convention
<b>Bold</b>	<p><b>Bold</b> type indicates text on a window, other than the window title. Such text includes menus, menu options, buttons, radio box options, or explanatory labels. For example:</p> <ul style="list-style-type: none"> <li>From the <b>File</b> menu, choose <b>Open</b>.</li> <li>Click the <b>Cancel</b> button.</li> <li>In the <b>Enter name</b> entry box, type your name.</li> </ul>
<i>Italics</i>	<p><i>Italics</i> are used to indicate a placeholder for some actual text to be provided by the user or system. For example:</p> <ul style="list-style-type: none"> <li>Write the command as follows: <code>copy source-file target-file</code></li> <li>The following message appears: A file was not found. (file = <i>file-name</i>)</li> </ul> <p><i>Italics</i> are also used for emphasis. For example:</p> <ul style="list-style-type: none"> <li>Do <i>not</i> delete the configuration file.</li> </ul>
Code font	<p>A code font indicates text that the user enters without change, or text (such as messages) output by the system. For example:</p> <ul style="list-style-type: none"> <li>At the prompt, enter <code>dir</code>.</li> <li>Use the <code>send</code> command to send mail.</li> <li>The following message is displayed: <code>The password is incorrect.</code></li> </ul>

The following table explains the symbols used in this manual:

Symbol	Convention
	<p>In syntax explanations, a vertical bar separates multiple items, and has the meaning of OR. For example:</p>

Symbol	Convention
	A B C means A, or B, or C.
{ }	In syntax explanations, curly brackets indicate that only one of the enclosed items is to be selected. For example: {A B C} means only one of A, or B, or C.
[ ]	In syntax explanations, square brackets indicate that the enclosed item or items are optional. For example: [A] means that you can specify A or nothing. [B C] means that you can specify B, or C, or nothing.
...	In coding, an ellipsis (...) indicates that one or more lines of coding are not shown for purposes of brevity. In syntax explanations, an ellipsis indicates that the immediately preceding item can be repeated as many times as necessary. For example: A, B, B, ... means that, after you specify A, B, you can specify B as many times as necessary.

## ■ Conventions: KB, MB, GB, and TB

This manual uses the following conventions:

- 1 KB (kilobyte) is 1,024 bytes.
- 1 MB (megabyte) is 1,024<sup>2</sup> bytes.
- 1 GB (gigabyte) is 1,024<sup>3</sup> bytes.
- 1 TB (terabyte) is 1,024<sup>4</sup> bytes.

## ■ Conventions: Version numbers

The version numbers of Hitachi program products are usually written as two sets of two digits each, separated by a hyphen. For example:

- Version 1.00 (or version 1.0) is written as 01-00
- Version 2.05 is written as 02-05
- Version 2.50 (or version 2.5) is written as 02-50
- Version 12.25 is written as 12-25

The version number might be shown on the spine of a manual as *Ver. 2.00*, but the same version number would be written in the program as *02-00*.

# Contents

<b>1</b>	<b>Overview</b>	<b>1</b>
1.1	Purpose of JP1/Software Distribution Administrator Kit	2
1.2	Features and facilities of JP1/Software Distribution Administrator Kit	3
1.2.1	Tools for easy installation of JP1/Software Distribution Client	3
1.2.2	Creating an installation set suited to the operation type of the distribution-destination client machine	4
1.2.3	Settings for acquiring the user inventory items and registering the clients in ID groups	6
1.2.4	Setting different connection destinations for client IP addresses	6
1.2.5	Using the automatic installation function to install a relay system	7
1.3	Notes on using JP1/Software Distribution Administrator Kit	8
<b>2</b>	<b>Installing and Using JP1/Software Distribution Administrator Kit</b>	<b>9</b>
2.1	Estimation for hardware	10
2.1.1	CPU performance	10
2.1.2	Memory requirements	10
2.1.3	Disk requirements	11
2.2	Installation and uninstallation	12
2.2.1	Installing JP1/Software Distribution Administrator Kit	12
2.2.2	Installing the Startup Kit Support Tool component	12
2.2.3	Uninstalling the Startup Kit Support Tool component and JP1/Software Distribution Administrator Kit	13
2.3	Procedure for using JP1/Software Distribution Administrator Kit	14
<b>3</b>	<b>Creating an Installation Set</b>	<b>15</b>
3.1	Preparations for creating an installation set	16
3.1.1	Checking the installation of the Startup Kit Support Tool component and preparing the installation medium containing JP1/Software Distribution Client	16
3.1.2	Determining the type of installation set you want to create	16
3.2	Procedure for creating an installation set	18
3.2.1	Starting Administrator Tool	18
3.2.2	Creating a new installation set	19
3.2.3	Editing an installation set	20
3.2.4	Copying an installation set	21
3.2.5	Deleting an installation set	21
3.3	Setting the details about an installation set	23
3.3.1	Setting items of an installation set	23
3.3.2	Setting the directory of the installation medium	24
3.3.3	Setting an account required for installation	26
3.3.4	Setting the connection destination of the client	27
3.3.5	Setting the components to be installed	31

3.3.6	Setting the user inventory items to be acquired and the ID groups to be registered in	33
3.3.7	Setting the files to be copied at installation	35
3.3.8	Setting the programs to be executed after installation	37
3.3.9	Setting overwrite installation	39
3.3.10	Setting the network to be used	42
3.3.11	Setting the FTP server to be used	44
3.3.12	Creating setup information	45

## 4

<b>Installing JP1/Software Distribution Client Using an Installation Set</b>		<b>59</b>
4.1	Preparation for using Client Tool	60
4.1.1	Preparation required before using an installation set for an FTP server	60
4.2	Executing Client Tool	61
4.2.1	When using an installation set for a CD-ROM	61
4.2.2	When using an installation set for a file server	61
4.2.3	When using an installation set for an FTP server	61
4.2.4	Return codes displayed for Client Tool	62
4.2.5	Notes on executing Client Tool	62
4.3	Executing Client Tool according to the type of operation	63
4.3.1	Distribution of compressed Client Tool	63
4.3.2	Using a batch file for the logon script	63
4.3.3	When the operating systems for installation destination client machines contain Windows 95	63

<b>Appendixes</b>		<b>67</b>
A.	Version Changes	68
B.	Glossary	70

<b>Index</b>		<b>71</b>
--------------	--	-----------

# 1

## Overview

This chapter describes the purpose, features, and facilities of JP1/Software Distribution Administrator Kit. This chapter also provides notes on using JP1/Software Distribution Administrator Kit.

## 1.1 Purpose of JP1/Software Distribution Administrator Kit

---

This section describes the purpose of JP1/Software Distribution Administrator Kit.

By using JP1/Software Distribution, you can group distribution destinations based on the purpose of using the client machines and set the timing for distributing software, as well as installation conditions, to manage the distribution of software more closely.

Until now, system administrators had to group distribution destinations and set the distribution timing and installation conditions during installation and setup of JP1/Software Distribution, so they needed to repeat the same procedure each time they newly installed or upgraded JP1/Software Distribution.

To reduce this burden on the system administrator, *JP1/Software Distribution Administrator Kit* provides facilities to automatically install and set up JP1/Software Distribution Client on client machines.

By using the tools provided by JP1/Software Distribution Administrator Kit, you can create an *installation set* according to the purpose and work environment of each client machine. An installation set is a collection of files required to automatically install JP1/Software Distribution Client.

Once you create an installation set, you will only need to execute the installation set to complete installation and setup of JP1/Software Distribution Client.

## 1.2 Features and facilities of JP1/Software Distribution Administrator Kit

This section describes the features of JP1/Software Distribution Administrator Kit and gives an overview of the facilities provided.

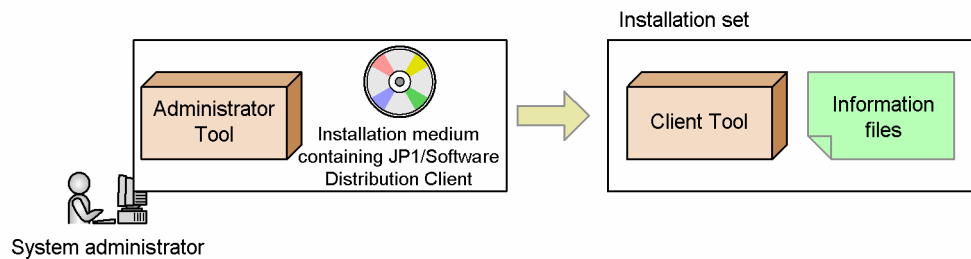
### 1.2.1 Tools for easy installation of JP1/Software Distribution Client

JP1/Software Distribution Administrator Kit provides *Startup Kit* that enables you to easily install and set up JP1/Software Distribution Client. Startup Kit consists of *Administrator Tool* and *Client Tool*.

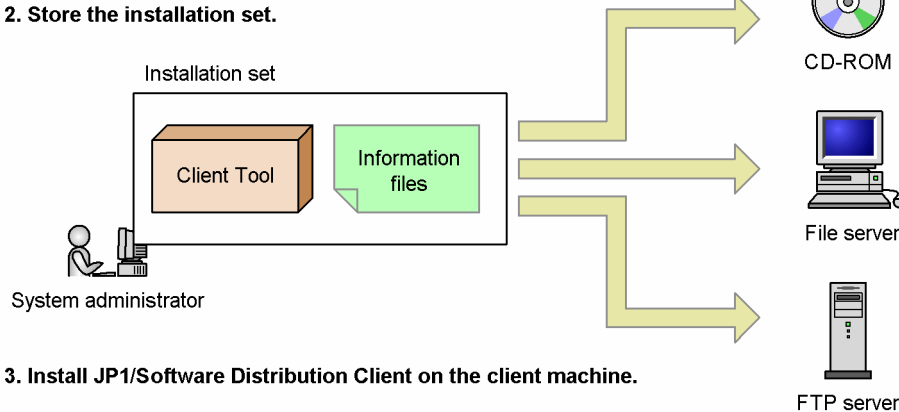
Figure 1-1 shows the procedure for installing JP1/Software Distribution Client using Startup Kit.

Figure 1–1: Procedure for installing JP1/Software Distribution Client by using Startup Kit

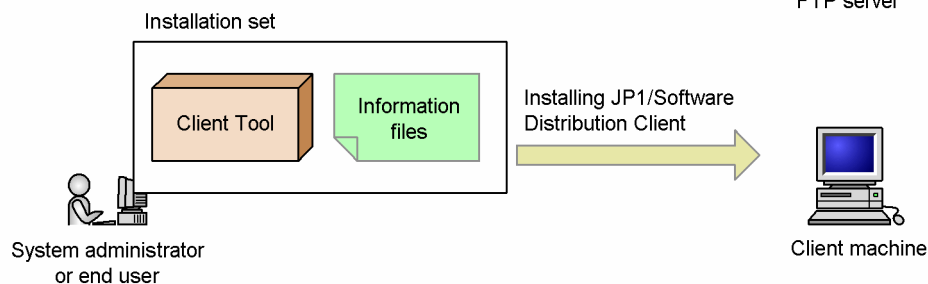
#### 1. Create the installation set.



#### 2. Store the installation set.



#### 3. Install JP1/Software Distribution Client on the client machine.



To install JP1/Software Distribution Client:

#### 1. Create the installation set.

Use Administrator Tool to create the *installation set* of JP1/Software Distribution Client. The installation set can be created for JP1/Software Distribution Client 06-53 or later.

#### 2. Store the installation set.

## 1. Overview

Store the installation set on the medium (CD-ROM, file server, or FTP server) used for installing JP1/Software Distribution Client according to the type of installation set you specified using Administrator Tool.

### 3. Install JP1/Software Distribution Client on the client machine.

When you execute Client Tool in the installation set on the client machine at the distribution destination, JP1/Software Distribution Client is automatically installed according to the contents of the installation set that you created in step 1.

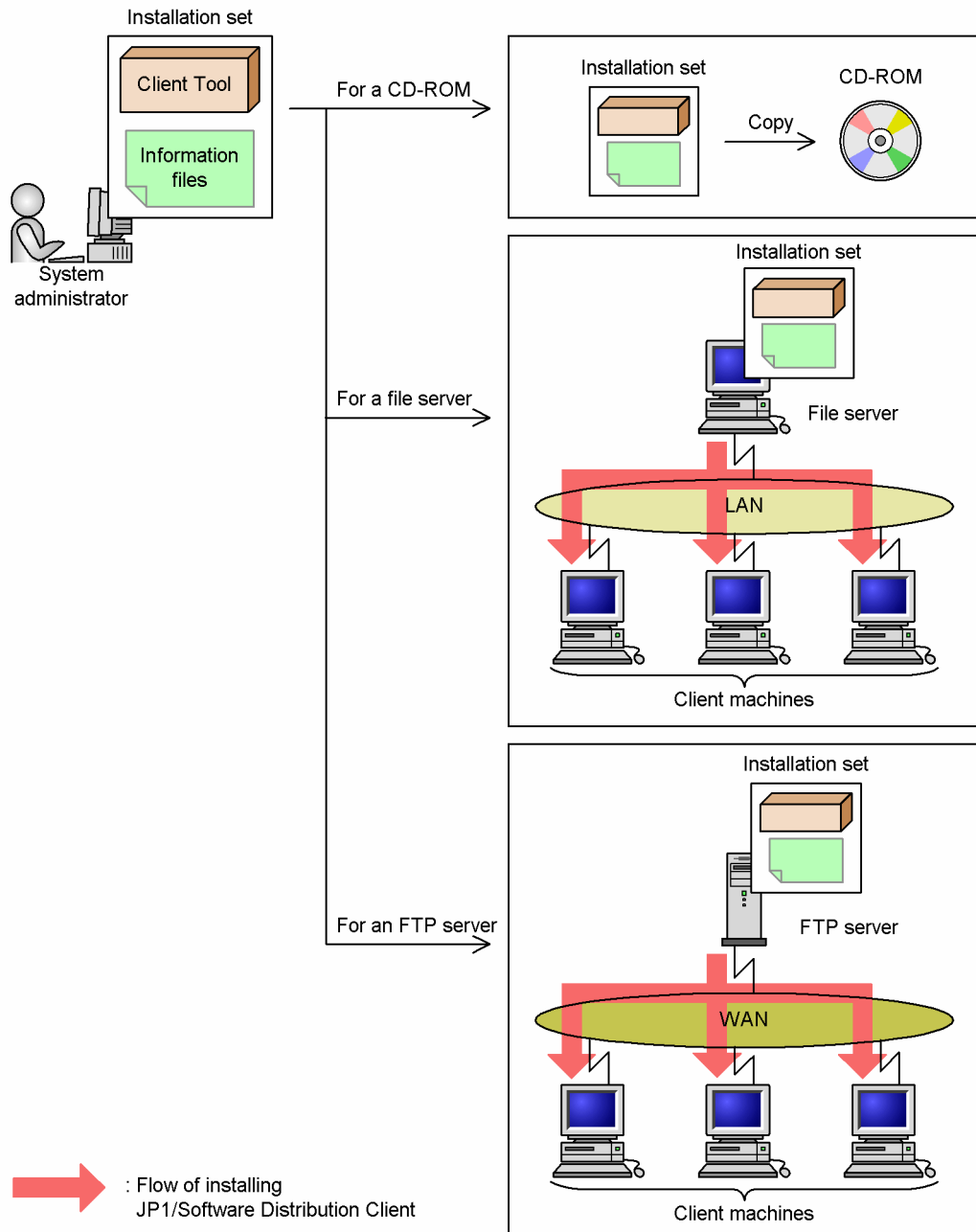
## 1.2.2 Creating an installation set suited to the operation type of the distribution-destination client machine

You can select the type of installation set to create based on the operation type of the client machine at the distribution destination. You can select from three types of installation sets: installation set *for a CD-ROM*, *for a file server*, and *for an FTP server*. You can install JP1/Software Distribution Client by inserting the CD-ROM in each client machine. In addition, you can also install JP1/Software Distribution Client using a file server or an FTP server.

Figure 1-2 shows the concept of creating an installation set by using Administrator Tool.



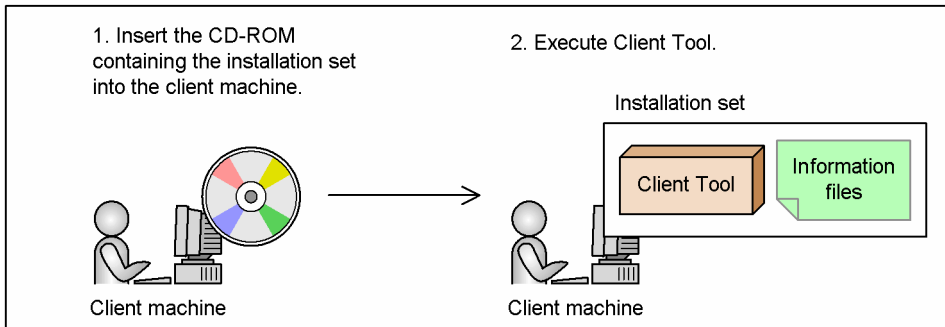
Figure 1-2: Concept of creating an installation set by using Administrator Tool



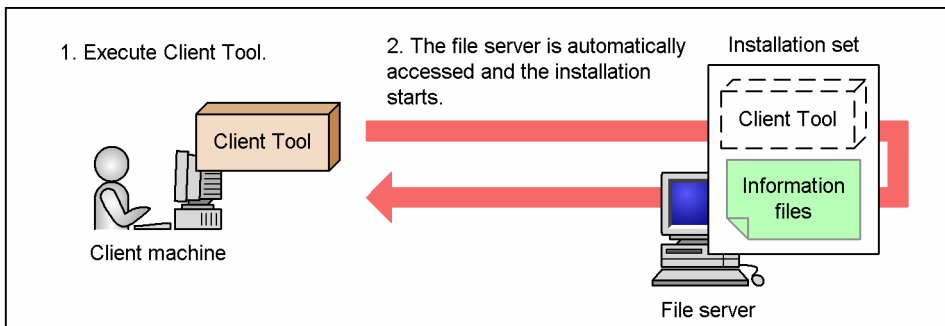
Use an installation set to install JP1/Software Distribution Client with the procedure described in Figure 1-3.

Figure 1–3: Concept of installing JP1/Software Distribution Client by using an installation set

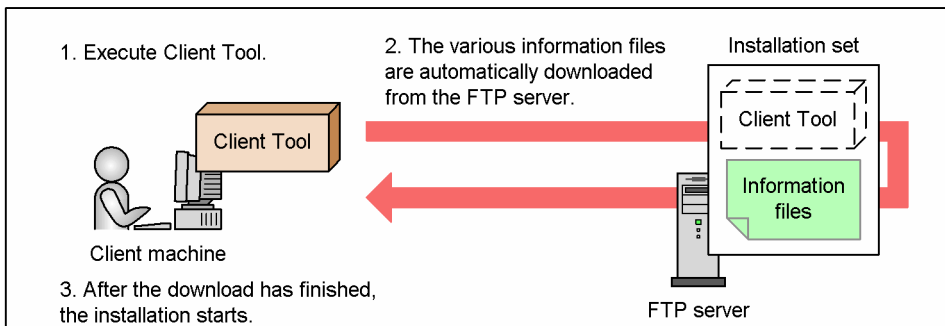
- When using an installation set for a CD-ROM



- When using an installation set for a file server



- When using an installation set for an FTP server



### 1.2.3 Settings for acquiring the user inventory items and registering the clients in ID groups

You can use Administrator Tool to set the *user inventory* (user-specific information to be managed about clients) items to be acquired and *ID groups* (groups of distribution destinations to be specified as job destinations) in which the client should be registered, in addition to setting the ordinary items for installing JP1/Software Distribution Client.

Administrator Tool also provides optional facilities that the system administrator can use depending on the manner of operation. The facilities enable operations including the installing or executing of user-specific programs after installation.

### 1.2.4 Setting different connection destinations for client IP addresses

You can use an installation set to specify connection destinations for a specific range of client IP addresses. During automatic installation, the connection destination corresponding to the IP address of each client is automatically

selected. As a result, even if JP1/Software Distribution has multiple connection destinations, you only need one type of installation set to automatically install JP1/Software Distribution on all the clients.

### 1.2.5 Using the automatic installation function to install a relay system

To install a new relay system, you can install JP1/Software Distribution Client on the target PC first. By using an installation set to install JP1Software Distribution Client and then performing remote installation of JP1Software Distribution on that PC, you can easily install the relay system for a remote location.

## 1.3 Notes on using JP1/Software Distribution Administrator Kit

---

- The remote installation functionality of JP1/Software Distribution cannot install an installation set. However, the functionality can remotely distribute an installation set to client machines. After the distribution, the installation set must be installed manually on the individual client machine.
- To use Job Management Partner 1/Software Distribution Administrator Kit to create Job Management Partner 1/Software Distribution Client installation sets, use the same version and revision for both products.  
If the revision of both products is not the same, use the previous revision of Job Management Partner 1/Software Distribution Administrator Kit.

# 2

## Installing and Using JP1/Software Distribution Administrator Kit

This chapter describes how to install and uninstall JP1/Software Distribution Administrator Kit. This chapter also describes how to install and uninstall the Startup Kit Support Tool component you need for using JP1/Software Distribution Administrator Kit. In addition, the chapter describes the procedure for installing JP1/Software Distribution Client using JP1/Software Distribution Administrator Kit.

## 2.1 Estimation for hardware

This section explains the CPU performance, memory sizes, and disk space required for running each tool provided by JP1/Software Distribution Administrator Kit.

A machine on which you install JP1/Software Distribution Administrator Kit requires the CPU performance, memory size, and disk space needed for running *Administrator Tool*.

Each client machine, on which you do not install JP1/Software Distribution Administrator Kit but distribute the installation set, requires the CPU performance, memory size, and disk space needed for running *Client Tool*. Note, however, that these client machines require at least the minimum CPU performance, memory size, and disk space needed for running JP1/Software Distribution Client.

### 2.1.1 CPU performance

Table 2-1 shows the minimum and the recommended CPU performance values required for running Administrator Tool and Client Tool.

Table 2-1: CPU performance required by JP1/Software Distribution Administrator Kit

Tool	Minimum (unit: MHz)	Recommended (unit: MHz)
Administrator Tool	Pentium II 300	Pentium III 500 or more
Client Tool	Pentium 75	Pentium 100 or more

### 2.1.2 Memory requirements

Table 2-2 shows the memory sizes required for running Administrator Tool and Client Tool.

Note that the virtual memory size indicated in the table is the memory requirement for the virtual memory area and not the virtual memory you can specify in the System Properties dialog box in Windows Me, Windows 98, and Windows 95.

Table 2-2: Memory requirements of JP1/Software Distribution Administrator Kit

Tool	OS in the use environment	Memory requirement (unit: megabytes)	
		Built-in memory	Virtual memory
Administrator Tool	<ul style="list-style-type: none"> <li>• Windows 8</li> <li>• Windows Server 2012</li> <li>• Windows 7</li> <li>• Windows Server 2008</li> <li>• Windows Vista</li> </ul>	136 or more	8
	<ul style="list-style-type: none"> <li>• Windows Server 2003</li> <li>• Windows XP Professional</li> <li>• Windows 2000 Server</li> <li>• Windows 2000 Advanced Server</li> </ul>	136 or more	5
	<ul style="list-style-type: none"> <li>• Windows 2000 Professional</li> </ul>	40 or more	
Client Tool	<ul style="list-style-type: none"> <li>• Windows 8</li> <li>• Windows Server 2012</li> <li>• Windows 7</li> <li>• Windows Server 2008</li> <li>• Windows Vista</li> </ul>	136 or more	6

Tool	OS in the use environment	Memory requirement (unit: megabytes)	
		Built-in memory	Virtual memory
Client Tool	<ul style="list-style-type: none"> <li>• Windows Server 2003</li> <li>• Windows XP</li> <li>• Windows 2000 Server</li> <li>• Windows 2000 Advanced Server</li> </ul>	136 or more	5
	<ul style="list-style-type: none"> <li>• Windows 2000 Professional</li> <li>• Windows NT 4.0</li> <li>• Windows Me</li> </ul>	40 or more	
	Windows 98	32 or more	
	Windows 95	24 or more	

### 2.1.3 Disk requirements

Table 2-3 shows the disk requirements of Administrator Tool and Client Tool.

Table 2-3: Disk requirements of JP1/Software Distribution Administrator Kit

Tool	Disk requirements (unit: megabytes)
Administrator Tool	3.0 <sup>#</sup>
Client Tool	0.4

#

This value does not contain the disk space required for the Startup Kit Support Tool component. For details about the disk space required for the Startup Kit Support Tool component, see the description about estimating the hardware requirement in either of the following manuals corresponding to the version of your JP1/Software Distribution Client: *Job Management Partner 1/Software Distribution Description and Planning Guide*, for Windows systems or *Job Management Partner 1/Software Distribution Description and System Setup*.

## 2.2 Installation and uninstallation

This section describes how to install and uninstall JP1/Software Distribution Administrator Kit. This section also describes how to install and uninstall the Startup Kit Support Tool component of JP1/Software Distribution Client.

### 2.2.1 Installing JP1/Software Distribution Administrator Kit

To install JP1/Software Distribution Administrator Kit:

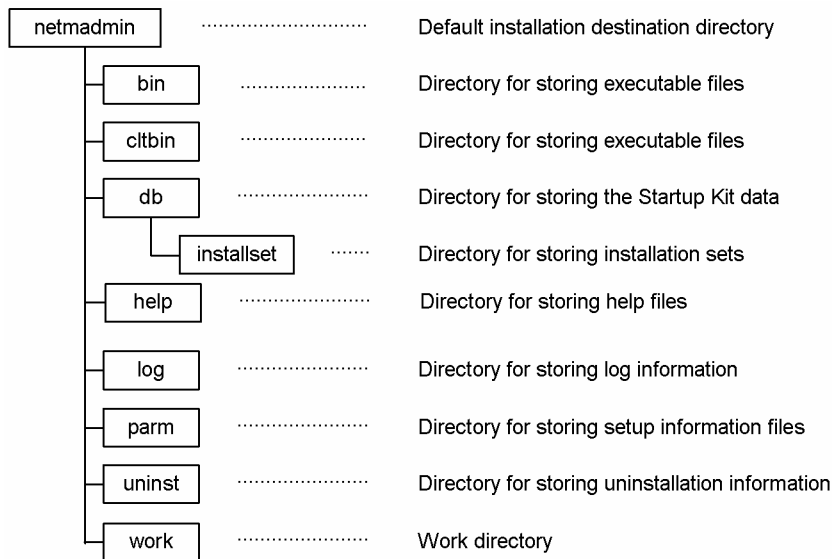
1. Log on using the user account with the Administrator permissions.
2. Insert the JP1/Software Distribution Administrator Kit distribution media into the CD-ROM drive.
3. Proceed the installation according to the instructions of the installer.

Perform the following according to the instructions of the installer:

- Register the user.  
This operation does not apply in Windows 8, Windows Server 2012, Windows 7, Windows Server 2008 and Windows Vista.
- Set the installation path.
- Set the program folder.

When the installation finishes, the directories shown in Figure 2-1 are created. By default (if you do not change the installation destination directory), the following directories are created in the *system-drive*\Program Files\Hitachi directory.

Figure 2-1: Directories to be created after the installation



### 2.2.2 Installing the Startup Kit Support Tool component

After you install JP1/Software Distribution Administrator Kit, you need to install the Startup Kit Support Tool component of JP1/Software Distribution Client. You cannot create an installation set without installing the Startup Kit Support Tool component.



To install the Startup Kit Support Tool component:

1. Log on using the user account with the Administrator permissions.
2. Load the installation medium (JP1/Software Distribution Client) into the CD-ROM drive.
3. Execute the installer.

Perform the following according to the instructions of the installer:

- Register the user.
- Set the installation path.
- Select the type.

To use JP1/Software Distribution Client 08-00 or later, open the Select Manager Type dialog box and choose **Client**.

Specifying settings in the Select Manager Type dialog box is unnecessary when you want to use JP1/Software Distribution Client 07-50 or earlier or when the operating system on your machine is Windows 98.

- Select the component.  
Select Startup Kit Support Tool as the component to be installed.

*Note*

The version of the Startup Kit Support Tool component must match the version of the installation medium (JP1/Software Distribution Client). For example, if the version of the installed Startup Kit Support Tool component is 08-00 and the version of the installation medium is other than 08-00, you cannot create an installation set. In such a case, install a Startup Kit Support Tool component whose version matches that of the installation medium.

### 2.2.3 Uninstalling the Startup Kit Support Tool component and JP1/Software Distribution Administrator Kit

To uninstall the Startup Kit Support Tool component and JP1/Software Distribution Administrator Kit:

1. Uninstall the Startup Kit Support Tool component.  
The uninstallation procedure varies depending on the version of the Startup Kit Support Tool component.
  - When the version of the component is 06-71 or earlier:  
Use **Add/Remove Programs** in the control panel to uninstall the component.
  - When the version of the component is 07-00 or later:  
Start the installer from the CD-ROM of the installed JP1/Software Distribution Client, and then use the maintenance wizard to uninstall the component.
2. Uninstall JP1/Software Distribution Administrator Kit.  
Use **Add/Remove Programs** in the control panel to uninstall JP1/Software Distribution Administrator Kit.

## 2.3 Procedure for using JP1/Software Distribution Administrator Kit

---

This section describes the procedure for installing JP1/Software Distribution Client using JP1/Software Distribution Administrator Kit.

To install JP1/Software Distribution Client using JP1/Software Distribution Administrator Kit:

1. Start Administrator Tool.  
Click the **Start** button. Choose **Programs, Software Distribution Administrator Kit**, and then **Startup Kit** to start Administrator Tool. When Administrator Tool starts, the Startup Kit dialog box appears.
2. Use Administrator Tool to create an installation set.  
Use Administrator Tool to set the type of installation set and details about the installation of JP1/Software Distribution Client. For details about using Administrator Tool, see Chapter 3. *Creating an Installation Set*.
3. Use Client Tool to install JP1/Software Distribution Client.  
Execute Client Tool on each client machine to install JP1/Software Distribution Client. For details about using Client Tool, see Chapter 4. *Installing JP1/Software Distribution Client Using an Installation Set*.

# 3

## Creating an Installation Set

You need to create an installation set using Administrator Tool before you use JP1/Software Distribution Administrator Kit to install JP1/Software Distribution Client. This chapter describes how to create an installation set using Administrator Tool.

## 3.1 Preparations for creating an installation set

---

This section describes the work you must do and the items you need to understand before you create an installation set.

### 3.1.1 Checking the installation of the Startup Kit Support Tool component and preparing the installation medium containing JP1/Software Distribution Client

Before you create an installation set, make sure that the Startup Kit Support Tool component of JP1/Software Distribution Client is installed. If the component is not installed, no installation set can be created. Install the component as described in 2.2.2 *Installing the Startup Kit Support Tool component*.

Since you need to use the installation medium containing JP1/Software Distribution Client when you create an installation set, prepare the installation medium containing JP1/Software Distribution Client. The installation media you can use include the CD-ROM containing JP1/Software Distribution Client and the Integrated CD-ROM without a password specified.

You cannot create an installation set in JP1/Software Distribution Client (relay system) 08-00 or later. Installation sets can be created only in JP1/Software Distribution Client (client).

### 3.1.2 Determining the type of installation set you want to create

You can create the following three types of installation sets using Administrator Tool:

- Installation set for a CD-ROM
- Installation set for a file server
- Installation set for an FTP server

The following describes the characteristics of each installation set. The system administrator must determine the type of the installation set to use according to the environment of the client machines.

#### *Installation set for a CD-ROM*

You create this type of installation set to install JP1/Software Distribution Client from a CD-ROM. When using this installation set, you can install JP1/Software Distribution Client even if the network environment is not prepared.

When you select the creation of an installation set for a CD-ROM, the installation set will be created in the local directory.

To install JP1/Software Distribution Client on client machines, copy the created installation set into a CD-ROM, and then load the CD-ROM onto each client machine.

#### *Installation set for a file server*

You create this type of installation set to install JP1/Software Distribution Client from a file server. When a user executes Client Tool on each client machine, the user can install JP1/Software Distribution Client based on the settings of the installation set in the file server.

The installation set for a file server is only for the environment in which users can share the network. If a client machine cannot use an already-mapped network drive for installation, you cannot use the installation set unless the client can map another network drive.

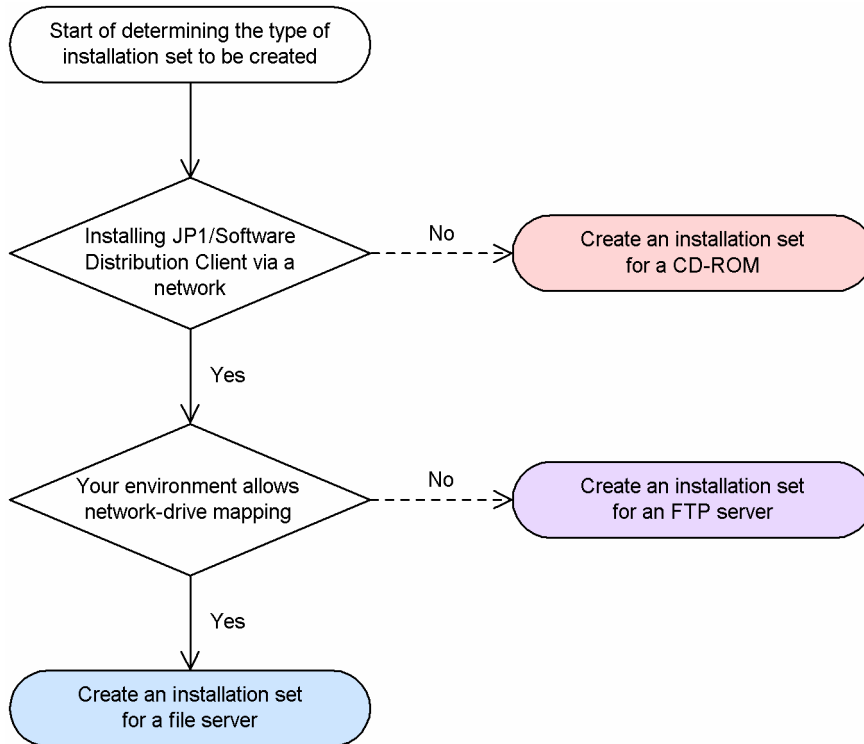
#### *Installation set for an FTP server*

You create this type of installation set to install JP1/Software Distribution Client from an FTP server. When a user executes Client Tool on a client machine, the user can install JP1/Software Distribution Client based on the settings of the installation set on the FTP server. You can use this installation set in any environment when a network is available.

Since Client Tool of the installation set for an FTP server downloads the installation set from the FTP server to the client machine during execution, the disk space required temporarily increases.

Figure 3-1 shows how to determine the type of installation set to be created.

Figure 3–1: Determining the type of installation set to be created



## 3.2 Procedure for creating an installation set

To create an installation set, you need to start Administrator Tool first. Then use Administrator Tool to determine the type of installation set, specify details about the installation of JP1/Software Distribution Client, and then create an installation set. Administrator Tool enables you to edit, copy, and delete a created installation set as well as create a new installation set.

This section describes how to start and use Administrator Tool.

### 3.2.1 Starting Administrator Tool

Only the users who have Administrator permissions can use Administrator Tool.

To start Administrator Tool:

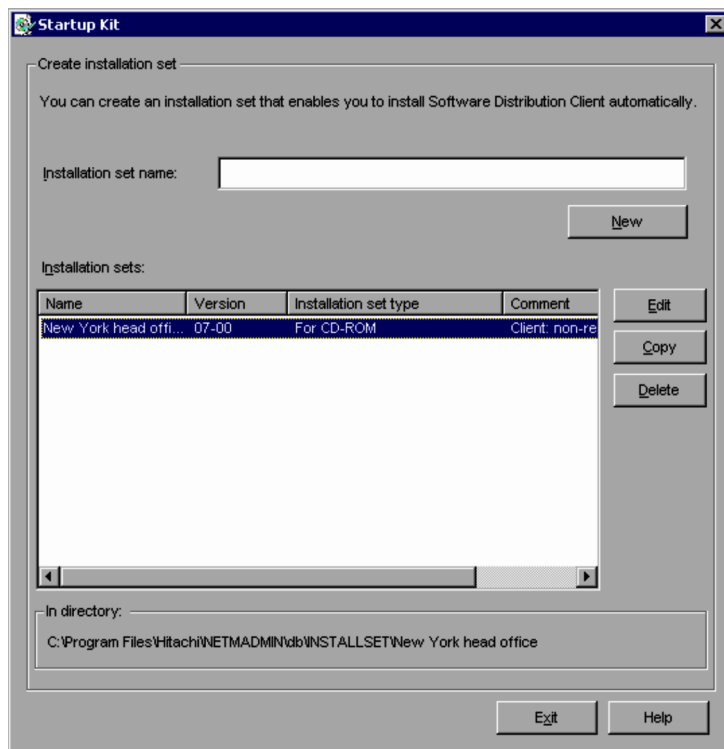
1. Click the **Start** button. Then choose **Programs, Software Distribution Administrator Kit**, and then **Startup Kit**.

Administrator Tool starts up and the Startup Kit dialog box appears. This dialog box lets you create a new installation set, and edit, copy and delete the created installation set.

In Windows 8, Windows Server 2012, Windows 7, Windows Server 2008 and Windows Vista, since only a member of the Administrators group can install a program, the User Account Control dialog box appears before Administrator Tool starts. After program execution is permitted in this dialog box, Administrator Tool can start. If you choose **Cancel** in this dialog box, Administrator Tool does not start.

Figure 3-2 shows the Startup Kit dialog box and the components of the dialog box.

Figure 3–2: Startup Kit dialog box



#### Installation set name text box

Use this text box to create a new installation set. Specify the name of the installation set you want to create.

#### New button

Use this button to create a new installation set. Specify an installation set name in the **Installation set name** text box and click this button. The Installation Set Type dialog box appears.

**Installation sets list**

This list displays the information about the created installation sets. The following items are displayed:

**Name**

Displays the name of an existing installation set.

**Version**

Displays the version of JP1/Software Distribution Client to be installed using the installation set.

**Installation set type**

Displays the type of installation set. There are three types: the installation set for a CD-ROM, the installation set for a file server, and the installation set for an FTP server.

**Comment**

Displays the comment about the installation set.

**Edit button**

Use this button to change the settings of an existing installation set.

**Copy button**

Use this button to copy the settings of an existing installation set to another installation set.

**Delete button**

Use this button to delete an existing installation set.

**In directory:**

When you select an installation set in the **Installation sets** list, the directory storing the installation set is displayed here. The format of the directory is *installation-destination-directory\netadmin\db\installset\installation-set-name-directory*.

**Exit button**

Click this button to close the Startup Kit dialog box.

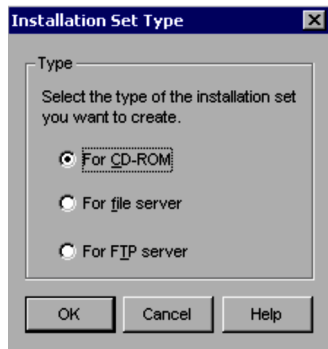
The following subsections describe the procedures for creating a new installation set, and editing, copying and deleting an existing installation set using this dialog box.

## 3.2.2 Creating a new installation set

To create a new installation set:

1. Insert the installation medium containing JP1/Software Distribution Client into the drive.
2. Start Administrator Tool.  
The Startup Kit dialog box is displayed.
3. In the Startup Kit dialog box, specify the name of the installation set in the **Installation set name** text box.  
The following restrictions are applied regarding the characters that can be used for installation set names.
  - Available characters are the same as for directory names. You can use no more than 32 characters.
  - You cannot use the following characters: \, /, \*, ", :, |, <, >, and ?
  - Since upper-case and lower-case characters are not distinguished, you cannot use names that become identical when they are converted from upper case to lower case or vice versa.
4. Click the **New** button.  
The Installation Set Type dialog box shown in Figure 3-3 appears.

Figure 3–3: Installation Set Type dialog box



The components of the Installation Set Type dialog box are as follows:

**For CD-ROM** radio button

Select this button to create an installation set for a CD-ROM.

**For file server** radio button

Select this button to create an installation set for a file server.

**For FTP server** radio button

Select this button to create an installation set for an FTP server.

5. Select the type of installation set and click the **OK** button.

When you click the **OK** button, the Create or Edit Installation Set dialog box appears. In this dialog box, you set the details for installing JP1/Software Distribution Client. For details about the Create or Edit Installation Set dialog box, see 3.3 *Setting the details about an installation set*.

6. When you complete the settings in the Create or Edit Installation Set dialog box, click the **OK** button.

The system returns to the Startup Kit dialog box. The created installation set is displayed in the **Installation sets** list. If an error message appears, correct the error as instructed by the message. Then click the **OK** button again.

7. Copy the installation set to a CD-ROM (for an installation set for a CD-ROM).

When you create an installation set for a CD-ROM, you must copy the created installation set from the local directory to a CD-ROM. After creating the installation set, copy all the files and directories from the directory that contains the installation set to the CD-ROM.

### 3.2.3 Editing an installation set

Sometimes, you might want to modify the settings in an existing installation set. For example, you may want to change the type of the installation set from an installation set for a CD-ROM to an installation set for a file server or change the higher connection destination of JP1/Software Distribution Client. In such a case, you can edit the existing installation set using Administrator Tool.

*Note*

When editing an installation set, you cannot change the settings about installation components.

To edit an installation set:

1. Insert the installation medium containing JP1/Software Distribution Client into the drive.

2. Start Administrator Tool.

The Startup Kit dialog box is displayed.

3. In the Startup Kit dialog box, select the desired installation set in the **Installation sets** list.

You can select only one installation set. If you select more than one installation set, editing is impossible.

4. Click the **Edit** button.

When you click the **Edit** button, the Installation Set Type dialog box is displayed.

5. In the Installation Set Type dialog box, select the desired type of installation set. Then click the **OK** button.

When you click the **OK** button, the Create or Edit Installation Set dialog box is displayed.



6. In the Create or Edit Installation Set dialog box, check the settings for installing JP1/Software Distribution Client and change the settings.  
For details about the Create or Edit Installation Set dialog box, see *3.3 Setting the details about an installation set*.
7. Click the **OK** button.  
The system returns to the Startup Kit dialog box. The edited installation set is displayed in the **Installation sets** list. If an error message appears, correct the error as instructed by the message and click the **OK** button again.

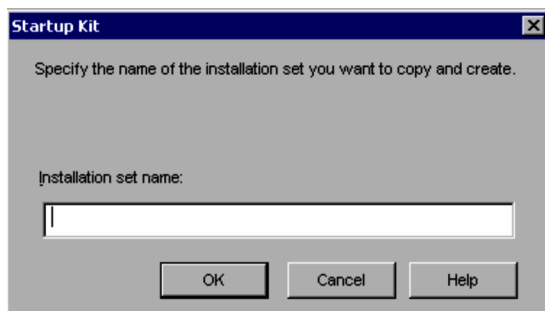
### 3.2.4 Copying an installation set

It is easy to create an installation set that slightly differs from an existing installation set: simply copy and edit the existing installation set.

To use Administrator Tool to copy the already created installation set:

1. Start Administrator Tool.  
The Startup Kit dialog box is displayed.
2. In the Startup Kit dialog box, select the desired installation set (with the settings you want to copy) in the **Installation sets** list.  
You can select only one installation set. If you select more than one installation set, copying is impossible.
3. Click the **Copy** button.  
The dialog box shown in Figure 3-4 is displayed.

Figure 3-4: Dialog box for specifying an installation set name (for copying an installation set)



The characters that you can specify in the **Installation set name** text box have the following restrictions:

- Available characters are the same as for directory names. You can use no more than 32 characters.
  - You cannot use the following characters: \, /, \*, ", :, |, <, >, and ?
  - Since upper-case and lower-case characters are not distinguished, you cannot use names that become identical when they are converted from upper case to lower case or vice versa.
4. In the **Installation set name** text box, specify the desired installation set name. Then click the **OK** button.  
The system returns to the Startup Kit dialog box. The new installation set with the copied settings is displayed in the **Installation sets** list. If an error message appears, correct the error as instructed by the message. Then click the **OK** button again.

### 3.2.5 Deleting an installation set

To delete an installation set that is no longer required:

1. Start Administrator Tool.  
The Startup Kit dialog box is displayed.
2. In the Startup Kit dialog box, select the desired installation set in the **Installation sets** list.  
You can select multiple installation sets.
3. Click the **Delete** button.  
A confirmation dialog box is displayed.

### 3. Creating an Installation Set

4. In the confirmation dialog box, check the installation set(s) you want to delete. Then click the **OK** button. The system deletes the selected installation set(s) and then returns to the Startup Kit dialog box.

## 3.3 Setting the details about an installation set

To create a new installation set or edit an existing installation set, you can set the transfer destination of the installation set and define detailed settings about the installation of JP1/Software Distribution Client. You can do so in the Create or Edit Installation Set dialog box.

This section describes how to define settings in the Create or Edit Installation Set dialog box.

### 3.3.1 Setting items of an installation set

This subsection describes the Create or Edit Installation Set dialog box and the setting items in each page. As an example, this subsection uses the dialog box that the system displays when you select **For CD-ROM** in the Installation Set Type dialog box.

Figure 3–5: Create or Edit Installation Set dialog box (for CD-ROM)

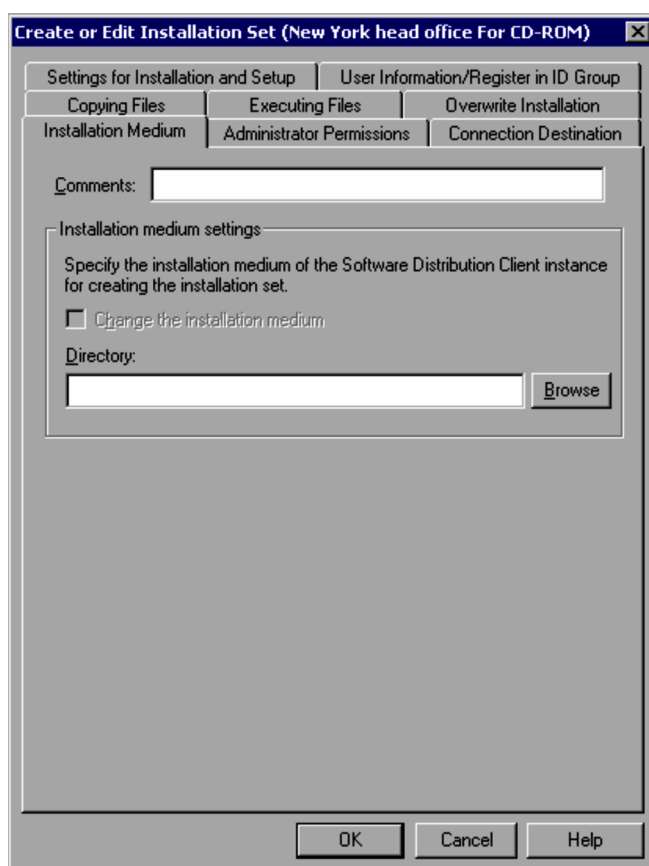


Table 3–1: Setting items in each page

Page name	Setting item
<b>Installation Medium</b>	You can set the directory of the installation medium containing the JP1/Software Distribution Client instance to be used. You also enter a comment for the installation set to be created.
<b>Administrator Permissions</b>	The settings in this page are valid only when the operating system of the client machine is Windows Server 2003, Windows XP, or Windows 2000. Set this page to allow a non-Administrator user to have the Administrator permissions when the user starts the installer of JP1/Software Distribution Client to install JP1/Software Distribution Client.
<b>Connection Destination</b>	You can set the information regarding the higher connection destination of the client machine.

### 3. Creating an Installation Set

Page name	Setting item
<b>Settings for Installation and Setup</b>	You can set the information about the installation components and the setup of JP1/Software Distribution Client.
<b>User Information/Register in ID Group</b>	You can set the user inventory items to be acquired or the ID group to which you want to register the client.
<b>Copying Files</b>	You can set the files that are copied when you install JP1/Software Distribution Client.
<b>Executing Files</b>	You can set the files to be executed after you install JP1/Software Distribution Client.
<b>Overwrite Installation</b>	You can specify whether or not to permit overwrite installation.  To permit overwrite installation, select whether you want to inherit the settings of installed JP1/Software Distribution Client, or apply new setup information. You also specify whether or not to enable the processing specified in the pages in the Create or Edit Installation Set dialog box.

Note that when you select **For file server** or **For FTP server** in the Installation Set Type dialog box, the **Network Sharing** page or the **FTP** page is displayed in addition to the above pages. Table 3-2 lists and describes the setting items in both pages.

Table 3-2: Setting items in the Network Sharing page and the FTP page

Page name	Setting item
<b>Network Sharing</b>	The system displays this page only when you select <b>For file server</b> in the Installation Set Type dialog box.  In this page, you can set the network drive mapping and the transfer account for the file server.
<b>FTP</b>	The system displays this page only when you select <b>For FTP server</b> in the Installation Set Type dialog box.  In this page, you can set the transfer to the FTP server and the download account.

The following subsections describe the components in each page.

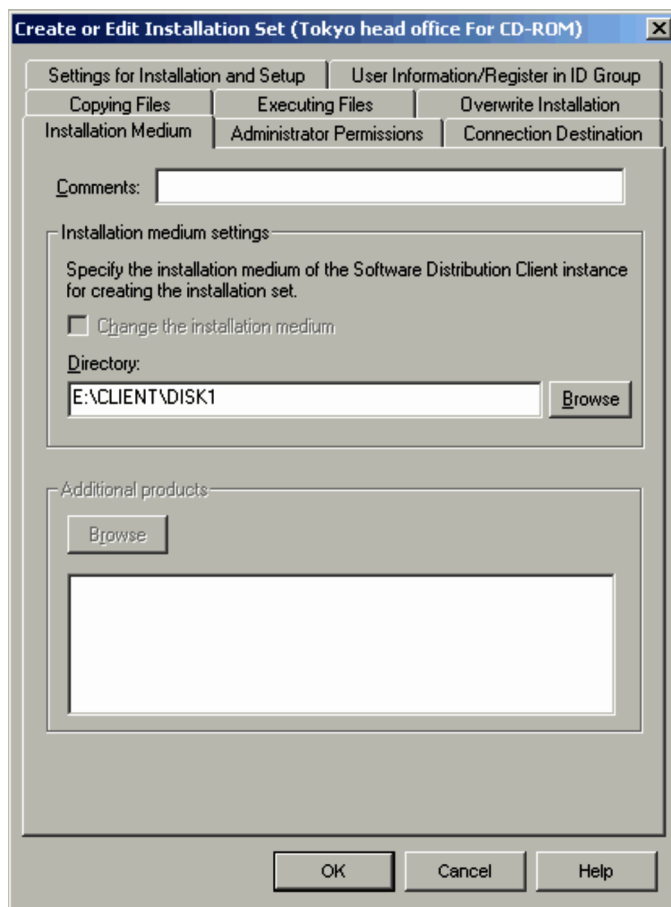
### 3.3.2 Setting the directory of the installation medium

To create an installation set, you need to set the directory storing the installation medium that contains JP1/Software Distribution Client to acquire installation information from the installation medium containing JP1/Software Distribution Client. To make this setting, use the **Installation Medium** page. In this page, you can also enter a comment for the installation set to be created.

#### (1) Installation Medium page

Figure 3-6 shows the **Installation Medium** page.

Figure 3–6: Installation Medium page



## (2) Components of the Installation Medium page

The components of the **Installation Medium** page are as follows.

### (a) Comments text box

You can enter a comment for the installation set. You can skip this text box if there is nothing to comment. You can enter no more than 128 characters. The contents you enter in this text box are displayed in **Comment** in the **Installation sets** list in the Startup Kit dialog box.

### (b) Change the installation medium check box

You can select this check box when you click the **Edit** button in the Startup Kit dialog box. If you click the **New** button, you cannot select this check box. When you select this check box, the installation medium for the existing installation set is changed to the medium you specified in the **Directory** text box. If you do not select this check box, the installation medium is not changed.

### (c) Directory text box

Use the **Browse** button to specify the directory in the installation medium. You can enter no more than 255 characters. The directory you should specify depends on the type of the installation medium as shown below.

- When using the CD-ROM containing JP1/Software Distribution Client  
Use a full pathname to specify the `DISK1` directory in the CD-ROM containing JP1/Software Distribution Client.  
Example: `E:\CLIENT\DISK1`
- When using the Integrated CD-ROM  
Specify the root directory of the Integrated CD-ROM.

Example: E : \

Note that you cannot create an installation set from the Integrated CD-ROM.

### 3.3.3 Setting an account required for installation

A user who wants to start the installer of JP1/Software Distribution Client needs to log on using an account with the Administrator permissions. This is the same for installing JP1/Software Distribution Client using Client Tool.

However, if you set an account in advance with the Administrator permissions for an installation set you created, even a non-Administrator user can use Client Tool to install JP1/Software Distribution Client. To make this setting, use the **Administrator Permissions** page.

#### Notes

- Settings in the **Administrator Permissions** page are effective only when the operating system of the client machine is Windows Server 2003, Windows XP, or Windows 2000. If the operating system is other than Windows Server 2003, Windows XP, or Windows 2000, the user cannot install JP1/Software Distribution Client unless the user logs on using an account with the Administrator permissions even if the proper settings are made in this page.
- Settings in the **Administrator Permissions** page are unnecessary if non-Administrator users do not execute Client Tool.

#### (1) Administrator Permissions page

Figure 3-7 shows the **Administrator Permissions** page.

Figure 3-7: Administrator Permissions page

Figure 3-7 shows the **Administrator Permissions** page. The dialog box is titled "Create or Edit Installation Set (New York head office For CD-ROM)". It features several tabs: "Settings for Installation and Setup", "User Information/Register in ID Group", "Copying Files", "Executing Files", "Overwrite Installation", "Installation Medium", "Administrator Permissions", and "Connection Destination". The "Administrator Permissions" tab is selected. The main area contains the text: "Settings for Administrator permissions. To start the installer, specify an account that has Administrator permissions. When the OS of the client is Windows 95, Windows 98, Windows Me or Windows NT4.0, these settings are ignored." Below this text are three input fields: "User name:", "Password:", and "Domain:". At the bottom of the dialog are three buttons: "OK", "Cancel", and "Help".

## (2) Components of the Administrator Permissions page

The components of the **Administrator Permissions** page are as follows.

### (a) User name text box

You can enter the name of the user with the Administrator permissions.

### (b) Password text box

You can enter the password of the user with the Administrator permissions.

### (c) Domain text box

You can enter the name of the domain that the user with the Administrator permissions belongs to.

## 3.3.4 Setting the connection destination of the client

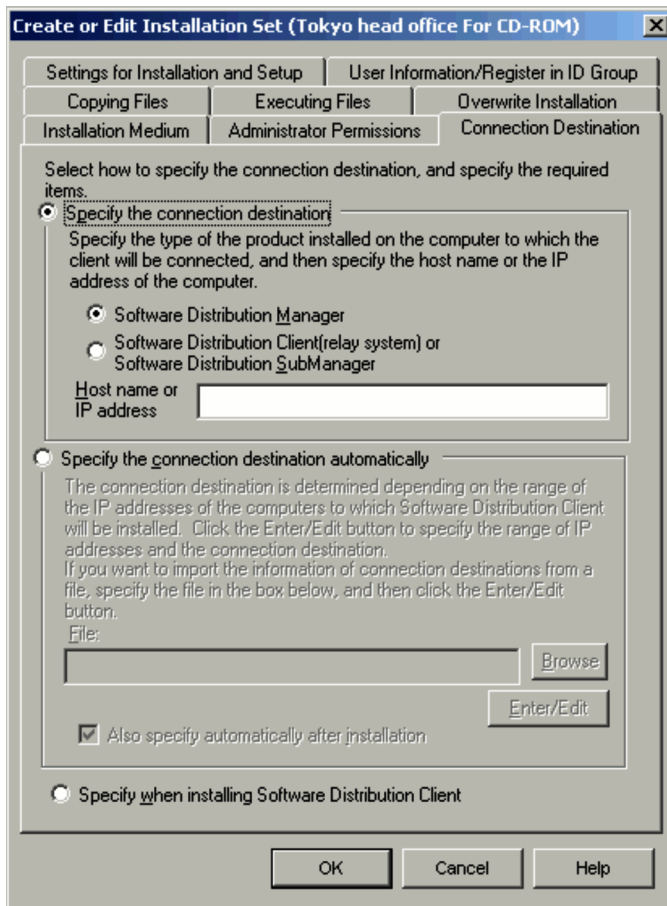
To install JP1/Software Distribution Client, you need to set the higher connection destination of JP1/Software Distribution Client. The machine set as the higher connection destination should be a machine on which any of the following programs has been installed: JP1/Software Distribution Manager, JP1/Software Distribution Client (relay system), JP1/Software Distribution SubManager version 07-53 or earlier, or the UNIX version of JP1/Software Distribution Client (relay system).

JP1/Software Distribution Administrator Kit enables you to set the higher connection destination automatically during installation. If you set the higher connection destination of JP1/Software Distribution Client when you create an installation set in advance, the specified higher connection destination is automatically set when you execute Client Tool. To set the higher connection destination, use the **Connection Destination** page.

### (1) Connection Destination page

Figure 3-8 shows the **Connection Destination** page.

Figure 3–8: Connection Destination page



## (2) Components of the Connection Destination page

The components of the **Connection Destination** page are as follows.

### (a) Specify the connection destination radio button

Select this radio button when either of the following is met:

- Only one higher connection destination is determined.
- You want to install JP1/Software Distribution Client when a higher connection destination is not determined yet.

This radio button is selected by default.

#### **Software Distribution Manager** radio button

#### **Software Distribution Client (relay system) or Software Distribution SubManager** radio button

Select the product installed on the higher connection destination machine. When JP1/Software Distribution Manager is installed, select the **JP1/Software Distribution Manager** radio button. When JP1/Software Distribution Client (relay system), JP1/Software Distribution SubManager version 07-53 or earlier, or the UNIX version of JP1/Software Distribution Client (relay system) is installed, select the **Software Distribution Client (Relay system) or Software Distribution SubManager** radio button. The **Software Distribution Manager** radio button is selected by default.

#### **Host name or IP address** text box

Specify the host name or the IP address of the higher connection destination machine. Be sure to specify a value when the **Specify the connection destination** radio button is selected. You can enter no more than 64 characters. All the clients on which JP1/Software Distribution Clients are installed using the current installation set will be connected to the higher connection destination machine specified here.



If you want to specify the higher connection destination after installation, specify ? or \*. You can specify ? when creating an installation set for JP1/Software Distribution Client 07-00 or later. For details about ? and \*, see the manual *Job Management Partner 1/Software Distribution Setup Guide*, for Windows systems.

(b) Specify the connection destination automatically radio button

Select this radio button when the higher connection destinations are determined and the higher connection destination differs depending on the client machine. This radio button is not selected by default.

If you select the **Specify the connection destination automatically** radio button, the appropriate higher connection destination will be specified in accordance with the IP address of each client machine at installation of JP1/Software Distribution Client. For example, you can use this setting when a machine at the New York branch is the higher connection destination of client machines with IP addresses 172.32.22.1 to 172.32.22.255 and a machine at the Boston branch is the higher connection destination of client machines with IP addresses 173.32.22.1 to 173.32.22.255. You can define IP address ranges of client machines and their corresponding higher connection destinations from the **File** text box or in the Automatic Specification of Connection Destinations dialog box.

(c) File text box

Use this text box when there is an installation set that is already created and you intend to reuse the information for higher connection destinations defined in that installation set. Use the **Browse** button to specify `dmhost.txt` (*information file for higher connection destinations*) to which information for higher connection destinations has been applied. You can specify no more than 255 characters for the path. You can only specify a file to which information for higher connection destinations defined in the installation set has been applied.

An information file for higher connection destinations has been created in an installation set if you previously selected the **Specify the connection destination automatically** radio button and defined higher connection destinations in accordance with each IP address range when creating an installation set. The information file for higher connection destinations will have been saved in the following path:

*Directory-for-storing-installation-sets\installation-set-name-directory\Disk0*

Using an information file for higher connection destinations enables you to specify the same information for higher connection destinations as specified for those of an already created installation set.

If you click the **Enter/Edit** button after specifying the file, the Automatic Specification of Connection Destinations dialog box appears. In this dialog box, you can confirm and edit the information for higher connection destinations specified in the file.

(d) Enter/Edit button

When you click the **Enter/Edit** button, the Automatic Specification of Connection Destinations dialog box appears to let you define the higher connection destinations and the range of IP addresses for the client machines.

Figure 3–9: Automatic Specification of Connection Destinations dialog box

In this dialog box, you can define the higher connection destinations of the client machines. The specified definition will be saved in the information file for higher connection destinations included in the installation set. The components of this dialog box are as follows.

**Software Distribution Manager** radio button

**Software Distribution Client (relay system) or Software Distribution SubManager** radio button

Select the product installed in the higher connection destination.

**Host name or IP address** text box

Specify the host name or the IP address of the higher connection destination. You can specify no more than 64 characters.

**IP addresses between** box

Specify the IP address of the client machine with the lowest IP address among the client machines that use the host specified in the **Host name or IP address** text box as the higher connection destination.

**and** box

Specify the IP address of the client machine with the highest IP address among the client machines that use the host specified in the **Host name or IP address** text box as the higher connection destination.

**Enter comments** text box

Enter a comment to clarify the higher connection destination and the range of IP addresses of the client machines. You can skip this text box if there is nothing to comment. You can enter no more than 128 characters.

**Add** button

This button adds the information specified in **Connection destination information** to the **Connection destinations** list.

**Change** button

Use this button to change the connection destination information that is already specified. First, select the desired connection destination in the **Connection destinations** list. The selected connection destination information appears in **Connection destination information**. When you change the displayed connection destination information and click the **Change** button, the selected connection destination information is changed to the information specified in **Connection destination information**.

**Delete button**

Use this button to delete the connection destination information that is already specified. Select the desired connection destination in the **Connection destinations** list, and then click the **Delete** button. Clicking the **Delete** button deletes the selected connection destination information.

**Connection destinations list**

The list displays the name and product type of the selected connection destination, the range of IP addresses of the client machines, and a comment. When you select a connection destination in this list, the corresponding information is displayed in **Connection destination information**.

**(e) Also specify automatically after installation check box**

You can select this check box when you have selected the **Specify the connection destination automatically** radio button. This check box is not selected by default.

If you select this check box, when the IP address of a client machine changes after installing JP1/Software Distribution Client, the appropriate connection destination will be automatically updated based on the new IP address. The connection destination is rechecked and modified in accordance with the information for higher connection destinations at the time when the client machine is restarted after changing the IP address. This is convenient when a client machine is moved because the connection destination of the client changes automatically.

You can also change the information for higher connection destinations stored in a client machine after using an installation set to install JP1/Software Distribution Client. For details, see the description about automatically updating client connection destinations in either of the following manuals appropriate for the version of your JP1/Software Distribution Client: *Job Management Partner 1/Software Distribution Description and Planning Guide*, for Windows systems, or *Job Management Partner 1/Software Distribution Description and System Setup*.

**(f) Specify when installing Software Distribution Client radio button**

Select this radio button if the higher connection destination is not yet determined and you want the user of the client to enter the higher connection destination during installation of JP1/Software Distribution Client. When you select this radio button, the window for specifying the higher connection destination appears when you execute Client Tool. This radio button is not selected by default.

### 3.3.5 Setting the components to be installed

JP1/Software Distribution Administrator Kit allows you to create an installation set incorporating the detailed settings of the installation components and the setup of JP1/Software Distribution Client to be installed. To make these settings, use the **Settings for Installation and Setup** page.

**(1) Settings for Installation and Setup page**

Figure 3-10 shows the **Settings for Installation and Setup** page.

Figure 3–10: Settings for Installation and Setup page



## (2) Components of the Settings for Installation and Setup page

The components of the **Settings for Installation and Setup** page are as follows.

### (a) Setup button

When you click the **Setup** button, a dialog box for setting the installation components and *setup information* of JP1/Software Distribution Client appears. You must specify setup information when installing and setting up JP1/Software Distribution Client. Setting the installation components and setup information in advance in the installation set enables the automatic installation of JP1/Software Distribution Client.

For details about the dialog box that appears when you click the **Setup** button, see *3.3.12 Creating setup information*. However, when you want to use JP1/Software Distribution Client 07-50 or earlier, see the description about the automatic installation of JP1/Software Distribution Client in the manual *Job Management Partner 1/Software Distribution Description and System Setup* for the appropriate version.

If you do not click the **Setup** button, an installation set applying the default settings for JP1/Software Distribution Client will be created.

#### Note

For JP1/Software Distribution Client 07-50 or later, if a user with Windows authentication has been specified in the authentication information for Remote Control Agent, do not specify authentication information on a machine running Windows Me or Windows 98. If you specify authentication information, the machine will reject connections from all users. For details about how to specify authentication information for Remote Control Agent, see the manual *Job Management Partner 1/Remote Control Description and Operator's Guide*.

### (b) Hide the installation destination directory check box

Use this check box to specify whether to hide the installation destination directory of JP1/Software Distribution Client. When you select this check box, the system hides the installation destination directory of JP1/Software Distribution Client. This check box is not selected by default.

*Note*

Consider carefully whether no problems will occur in the operation before you hide the installation destination directory of JP1/Software Distribution Client.

## (c) Display the uninstallation information in "Add/Remove Programs" check box

Use this check box to specify whether to display JP1/Software Distribution Client in **Add/Remove Programs** in the control panel. When you select this check box, JP1/Software Distribution Client is displayed in **Add/Remove Programs**. When you do not select this check box, JP1/Software Distribution Client is not displayed in **Add/Remove Programs**. This check box is selected by default.

*Note*

When you install JP1/Software Distribution Client using the installation set with this check box deselected, you cannot uninstall JP1/Software Distribution Client using **Add/Remove Programs**. To uninstall JP1/Software Distribution Client in such a case, start the installer from the CD-ROM for the installed product, and then use the maintenance wizard to uninstall JP1/Software Distribution Client.

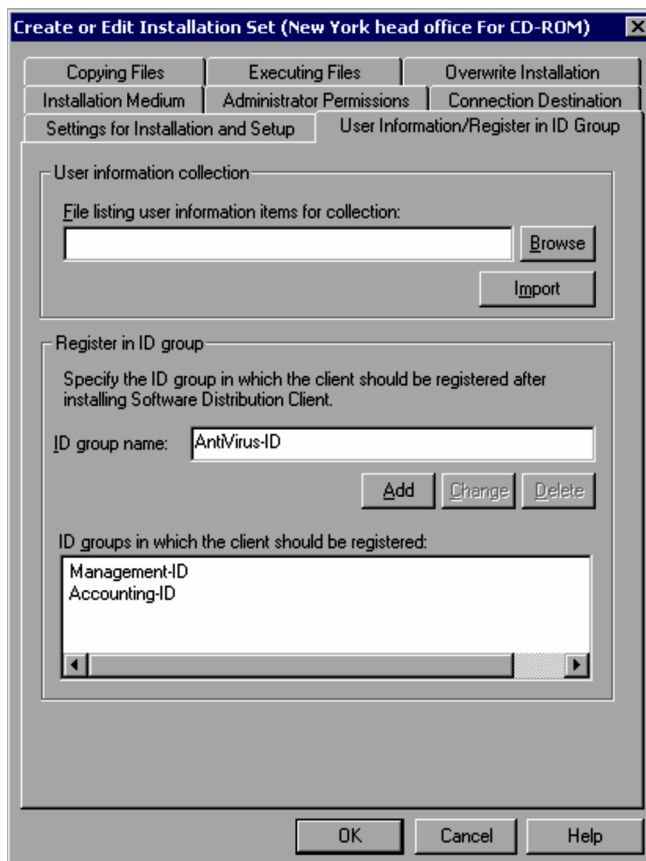
### 3.3.6 Setting the user inventory items to be acquired and the ID groups to be registered in

JP1/Software Distribution Administrator Kit allows you to create an installation set so you can automatically acquire the user inventory items or register the client to the ID group in the managing server when you execute Client Tool. You can make this setting in the **User Information/Register in ID Group** page.

## (1) User Information/Register in ID Group page

Figure 3-11 shows the **User Information/Register in ID Group** page.

Figure 3-11: User Information/Register in ID Group page



## (2) Components of the User Information/Register in ID Group page

The components of the **User Information/Register in ID Group** page are as follows.

### (a) File listing user information items for collection text box

In this text box, specify the file listing the user information items for collection. How to specify this file varies depending on whether or not the job execution options for JP1/Software Distribution Manager are enabled. You can enable these options for JP1/Software Distribution Manager 07-50 or later. When the job execution options are enabled, you can create an installation set that is set up, for example, to:

- Prevent entered user inventory information from being canceled.
- Automatically report the entered user inventory information to higher managing server.

The following describes how to specify the file listing the user information items for collection, depending on whether or not the job execution options for JP1/Software Distribution Manager are enabled. For details about how to operate JP1/Software Distribution Manager, see the manual *Job Management Partner 1/Software Distribution Administrator's Guide Volume 1*, for Windows systems.

When the job execution options for JP1/Software Distribution Manager are enabled:

1. In the Define User Inventory dialog box for JP1/Software Distribution Manager and the **Options** page in the Create Job dialog box, specify how to distribute user inventory items.
2. On JP1/Software Distribution Manager, execute the *Transfer user inventory schema to client* job. Collection items for the user inventory information are transferred to the client.
3. Before specifying user inventory information, collect the file listing the user information items for collection from the transfer destination client.

In the client, this file is stored in the FORM file in the following directory:

*JP1/Software-Distribution-Client-installation-destination-directory*\USERINV

You can use the remote collect function for JP1/Software Distribution Manager to collect the file. This function archives the collected file. When you use this function, restore the collected file to the original format.

4. Specify the collected file in the **File listing user information items for collection** text box for JP1/Software Distribution Administrator Kit. Use the **Browse** button to specify the file. You can specify no more than 255 characters for the path.

When the job execution options for JP1/Software Distribution Manager are disabled:

1. In the Define User Inventory dialog box for JP1/Software Distribution Manager, create user inventory items.
2. In the **File listing user information items for collection** text box for JP1/Software Distribution Administrator Kit, specify the file listing the user information items for collection that is automatically output.

This file is output to the FORM file in the following directory:

*JP1/Software-Distribution-Manager-installation-destination-directory*\USERFORM

Use the **Browse** button to specify the file listing the user information items for collection. If you cannot copy the file from the machine where JP1/Software Distribution Manager is installed when you create an installation set, use a floppy disk or other media to copy it. You can specify no more than 255 characters for the path of the file.

#### Note

You cannot use the file listing the user information items for collection of JP1/Software Distribution Manager for UNIX.

### (b) Import button

When you click the **Import** button, the system imports the user inventory collection items from the file specified in the **File listing user information items for collection** text box. If you do not specify any file in the **File listing user information items for collection** text box, this button does not operate. If you specify a file in the **File listing user information items for collection** text box, a message is output after the processing.

(c) ID group name text box

Specify the name of the ID group where you want to register clients after you install JP1/Software Distribution Client. You must specify an ID group in this text box when you add or change an ID group name.

Before specifying the ID group name, make sure that no password is specified for the ID group. If a password is specified for the ID group, you cannot register the client.

Note that the ID group name is case sensitive.

(d) Add button

This button adds the ID group specified in the **ID group name** text box to the **ID groups in which the client should be registered** list.

(e) Change button

Use this button to change the name of an ID group added in the **ID groups in which the client should be registered** list. Select the desired ID group in the **ID groups in which the client should be registered** list. The selected ID group appears in the **ID group name** text box. Change the displayed name of the ID group and click the **Change** button, and then the system changes the selected ID group name to the ID group name specified in the **ID group name** text box.

(f) Delete button

Use this button to delete an ID group that is added in the **ID groups in which the client should be registered** list. Select the desired ID group in the **ID groups in which the client should be registered** list and click the **Delete** button. When you click the button, the system deletes the selected ID group. When you select multiple ID groups, you can delete them all at one time.

(g) ID groups in which the client should be registered list

This list displays the ID groups where you can register clients after you install JP1/Software Distribution Client. When you select an ID group in this list, the corresponding information is displayed in the **ID group name** text box.

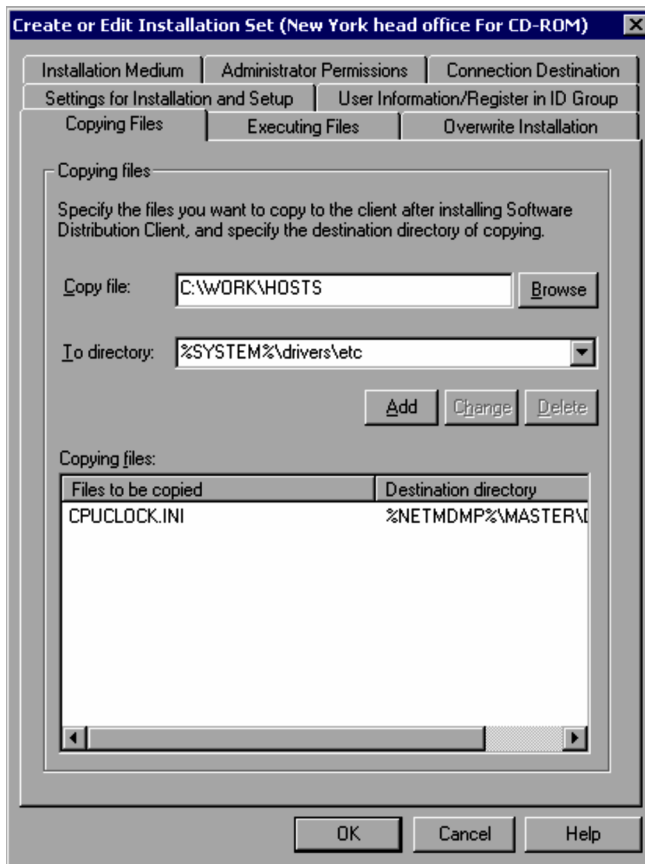
### 3.3.7 Setting the files to be copied at installation

JP1/Software Distribution Administrator Kit allows you to set the files you want to copy to the client machine at the time when you install JP1/Software Distribution Client by executing Client Tool. You can make this setting in the **Copying Files** page. Use this page if you want to copy the user-created programs and files into the client machines when installing JP1/Software Distribution Client.

#### (1) Copying Files page

Figure 3-12 shows the **Copying Files** page.

Figure 3–12: Copying Files page



## (2) Components of the Copying Files page

The components of the **Copying Files** page are as follows.

### (a) Copy file text box

In this text box, specify the file you want to copy. Use the **Browse** button to specify it.

#### *Note*

In the **Executing Files** page, you cannot specify more than one file that you specify in the **Copying Files** page.

### (b) To directory combo box

Specify the destination directory where you want to copy the file specified in the **Copy file** text box when installing JP1/Software Distribution Client. You can specify no more than 255 characters for the path of the directory. You can also select the following directories using this combo box.

%NETMDMP%

Installation destination directory of JP1/Software Distribution Client

%WINDOWS%

Installation destination directory of Windows

%SYSTEM%

system or system32 directory in the installation destination directory of Windows

To specify a directory in one of the above three directories, use \ as a delimiter. For example, when you specify the REG directory in the installation destination directory of JP1/Software Distribution Client, you specify %NETMDMP%\REG.



(c) Add button

This button adds the file specified in the **Copy file** text box and the directory specified in the **To directory** text box to the **Copying files** list.

(d) Change button

Use this button to change the copy file added in the **Copying files** list. Select the desired copy source file in the **Copying files** list. The corresponding setting information is displayed in the **Copy file** text box and the **To directory** text box. When you change the displayed setting information and click the **Change** button, the setting information of the selected copy source file is changed to the information specified in the **Copy file** text box and the **To directory** combo box.

(e) Delete button

Use this button to delete a copy file added in the **Copying files** list. Select the desired copy source file in the **Copying files** list and click the **Delete** button. When you click the button, the system deletes the selected copy source file.

(f) Copying files list

This list displays the files to be copied when installing JP1/Software Distribution Client as well as the copy destination directories. When you select a copy source file in this list, the system displays the corresponding information in the **Copy file** text box and the **To directory** combo box.

### 3.3.8 Setting the programs to be executed after installation

JP1/Software Distribution Administrator Kit allows you to set the programs to be automatically executed after installing JP1/Software Distribution Client by executing Client Tool. You can make this setting in the **Executing Files** page. Use this page if you want to automatically execute the user-created programs after installing JP1/Software Distribution Client.

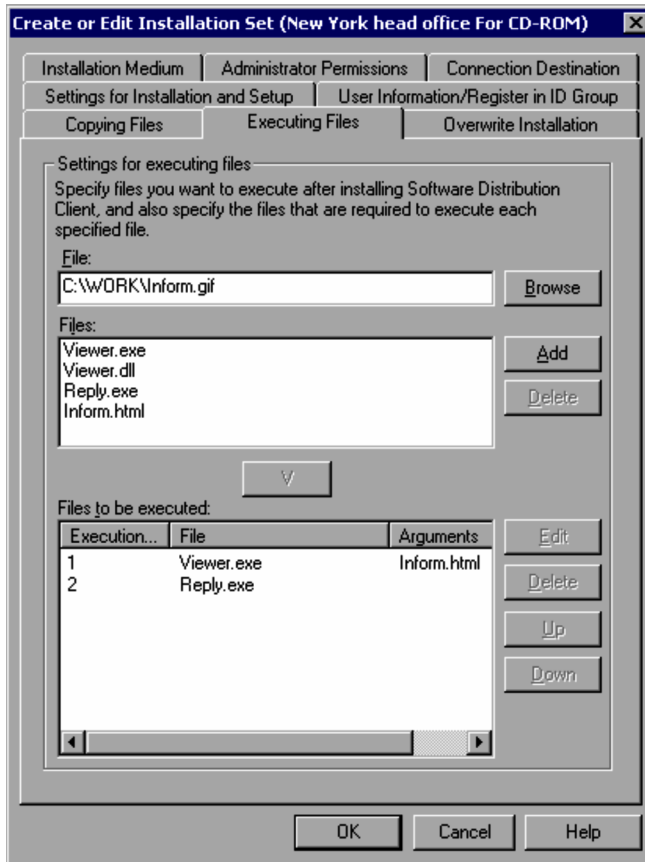
*Note*

If you create an installation set for an FTP sever and execute Client Tool in that installation set, the executable files specified in this **Executing Files** page remain in the temporary directory. Delete them if they are unnecessary.

#### (1) Executing Files page

Figure 3-13 shows the **Executing Files** page.

Figure 3–13: Executing Files page



## (2) Components of the Executing Files page

The components of the **Executing Files** page are as follows.

### (a) File text box

Specify the path of the executable file and the path of the files that are required for execution. Use the **Browse** button to specify them. You can specify no more than 255 characters for the path of the executable file or the path of the file required for execution.

#### *Note*

In the **Copying Files** page, you cannot specify more than one file that you specify in the **Executing Files** page.

### (b) Files list

This list displays the executable files and the files the system requires for execution.

### (c) Add button

This button adds the file specified in the **File** text box to the **Files** list.

### (d) Delete button

Use this button to delete a file added in the **Files** list. Select the desired file in the **Files** list and click the **Delete** button. When you click the button, the selected file is deleted from the **Files** list.

### (e) V button

Use this button to add an executable file in the **Files** list to **Files to be executed**. Select the desired executable file in the **Files** list and click the **V** button. When you click the **V** button, a dialog box appears for specifying arguments. You

can specify arguments consisting of no more than 255 characters. Specify the arguments, and then click the **OK** button in the dialog box to register the executable file in the **Files to be executed** list with the arguments.

(f) **Files to be executed list**

This list displays the names of executable files and their arguments, and indicates the execution sequence of the executable files.

(g) **Edit button**

Use this button to change the arguments of an executable file registered in the **Files to be executed** list. Select the desired executable file in the **Files to be executed** list and then click the **Edit** button. When you click the **Edit** button, a dialog box appears for specifying arguments in the same manner as when you click the **V** button. You can specify arguments consisting of no more than 255 characters. Change the arguments, and then click the **OK** button to apply the change to the **Files to be executed** list.

(h) **Delete button**

Use this button to delete an executable file registered in the **Files to be executed** list. Select the desired executable file in the **Files to be executed** list and click the **Delete** button. When you click the button, the system deletes the selected executable file from the **Files to be executed** list.

(i) **Up button**

Use this button to change the execution sequence of the executable files registered in the **Files to be executed** list. Select the desired executable file in the **Files to be executed** list and click the **Up** button. When you click the **Up** button, the system moves the selected file up one in the order of execution.

(j) **Down button**

Use this button to change the execution sequence of the executable files registered in the **Files to be executed** list. Select the desired executable file in the **Files to be executed** list and click the **Down** button. When you click the **Down** button, the system moves the selected file down one in the order of execution.

### 3.3.9 Setting overwrite installation

Specify whether or not to permit overwrite installation to be performed on a machine where JP1/Software Distribution Client has already been installed.

You can create an installation set to inherit the settings of existing JP1/Software Distribution Client or apply new setup information. You can also use the **Overwrite Installation** page to specify whether to enable the processing specified in the pages in the Create or Edit Installation Set dialog box during overwrite installation.

The following describes the notes on overwrite installation.

- Before starting overwrite installation, back up the following registries:  
 HKEY\_LOCAL\_MACHINE\SOFTWARE\HITACHI\NETM/DM/P  
 HKEY\_LOCAL\_MACHINE\SOFTWARE\HITACHI\JP1/RemoteControlAgent
- Installation sets created in JP1/Software Distribution Administrator Kit 07-00 or earlier do not support overwrite installation. To set overwrite installation, you must edit the installation set. For details about how to edit an installation set, see *3.2.3 Editing an installation set*.
- During overwrite installation, the existing installation components that match the installation components specified in the installation set are overwritten. The system installs installation components specified in the installation set which have not been installed.
- Note the following if JP1/Software Distribution Client has already been installed on the PC before automatic installation:
  - JP1/Software Distribution will be installed in the existing installation directory. This folder cannot be changed.  
 For details about specifying the installation directory for JP1/Software Distribution Client, see *3.3.12(2)(a) Specifying the installation directory*.

### 3. Creating an Installation Set

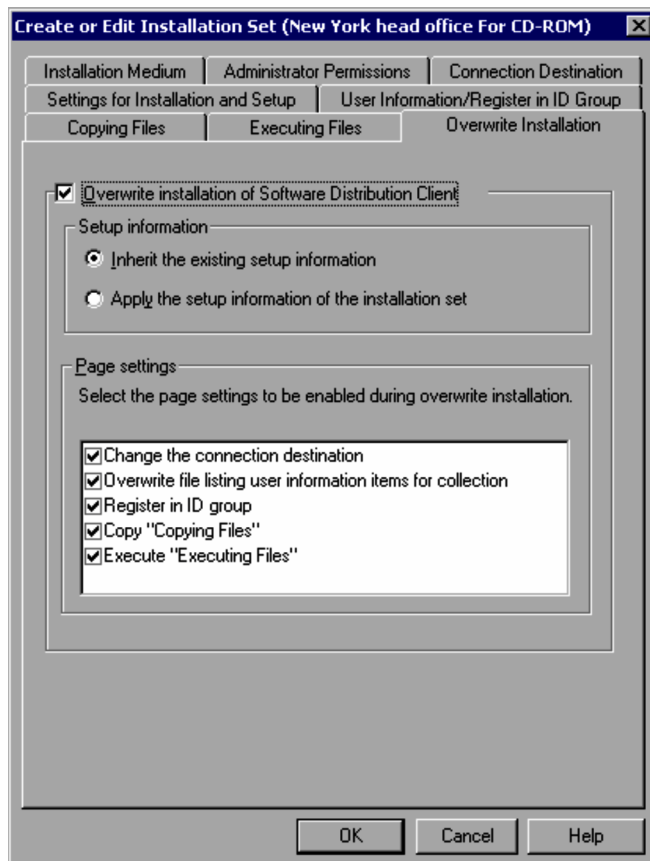
- The existing program folder containing the JP1/Software Distribution icon is inherited. This program folder cannot be changed. If this program folder has not been created, no new folder can be created.  
For details about specifying the program folder, see 3.3.12(2)(b) *Specifying the program folder*.
- The existing installation work directory and the existing backup directory to be used for restoration if installation fails are inherited. These directories cannot be changed.  
For details about specifying work directories, see 3.3.12(3)(c) *Specifying work directories*.
- Note the following when you select a subcomponent for specifying the setup information of a client:
  - If a subcomponent you select in the Select Subcomponents dialog box is already installed, the subcomponent will be overwritten. If a subcomponent has not been installed, it will be installed.
  - When a subcomponent that you have not selected in the Select Subcomponents dialog box is already installed, that subcomponent will be uninstalled if the JP1/Software Distribution Administrator Kit version is 07-00 or later. If the version is 06-71 or earlier, the subcomponent will remain installed.
  - If the check boxes for the **Package Setup Manager** and **Additional facilities** subcomponents are cleared in the Select Subcomponents dialog box when JP1/Software Distribution Administrator Kit is upgraded from version 05-12 or earlier, these two subcomponents will remain.

For details about selecting subcomponents, see 3.3.12(3)(a) *Selecting subcomponents*.

#### (1) Overwrite Installation page

Figure 3-14 shows the **Overwrite Installation** page.

Figure 3-14: Overwrite Installation page



#### (2) Components of the Overwrite Installation page

To perform overwrite installation on a client machine where JP1/Software Distribution Client has already been installed, in the **Overwrite Installation** page select the **Overwrite installation of Software Distribution Client**

check box. This check box is cleared by default. For new installation, all setup information of the installation set will be applied to the setup information for JP1/Software Distribution Client.

The following describes the components of the **Overwrite Installation** page that can be specified when the **Overwrite installation of Software Distribution Client** check box is selected.

(a) Inherit the existing setup information radio button

Select this radio button to inherit the setup information of existing JP1/Software Distribution Client, including the settings of multiple higher systems and the network environment. This radio button is selected by default. However, even if you select this radio button, settings for the JP1/Software Distribution Client display specified with the **Display the uninstallation information in "Add/Remove Programs"** check box in the **Settings for Installation and Setup** page will not be inherited.

For details about the setup information, see 3.3.12 *Creating setup information*. However, when you want to use JP1/Software Distribution Client 07-50 or earlier, see the description about the automatic installation of JP1/Software Distribution Client in the manual *Job Management Partner 1/Software Distribution Description and System Setup* for the appropriate version.

(b) Apply the setup information of the installation set radio button

Select this radio button to apply setup information specified in the **Settings for Installation and Setup** page, including the settings of multiple higher systems and the network environment, to set up information for JP1/Software Distribution Client. However, even if you select this radio button, information about hidden files for the JP1/Software Distribution Client installation directory specified with the **Hide the installation destination directory** check box in the **Settings for Installation and Setup** page will not be applied.

For details about the setup information, see 3.3.12 *Creating setup information*. However, when you want to use JP1/Software Distribution Client 07-50 or earlier, see the description about the automatic installation of JP1/Software Distribution Client in the manual *Job Management Partner 1/Software Distribution Description and System Setup* for the appropriate version.

(c) Page settings

Select the processing to be performed during installation of JP1/Software Distribution Client. You can perform the following processing specified in the pages in the Create or Edit Installation Set dialog box. The check boxes for all the items are selected by default. As required, clear the check boxes of the items not to be performed.

**Change the connection destination**

The specified higher connection destination is applied during installation of JP1/Software Distribution Client. Clear the check box if you do not want to change the higher connection destination. For details about how to set the connection destination, see 3.3.4 *Setting the connection destination of the client*.

To specify multiple higher systems in addition to the settings in the **Connection Destination** page in the Create or Edit Installation Set dialog box, use the **Setup** button in the **Settings for Installation and Setup** page.

**Overwrite file listing user information items for collection**

During installation of JP1/Software Distribution Client, the system overwrites the file listing the user information items for collection and acquires user inventory information. Clear the check box if you do not want to acquire user inventory information. For details about how to register the user inventory information items to be acquired, see 3.3.6 *Setting the user inventory items to be acquired and the ID groups to be registered in*.

**Register in ID group**

After installation of JP1/Software Distribution Client, the system registers JP1/Software Distribution Client into the specified ID group. Clear the check box if you do not add or change an ID group name. For details about how to specify the ID group to be registered, see 3.3.6 *Setting the user inventory items to be acquired and the ID groups to be registered in*.

**Copy "Copying Files"**

During installation of JP1/Software Distribution Client, the system copies the specified programs and files onto the client machine. Clear the check box if you do not have a program or files to be copied to the client machine. For details about how to set the files to be copied, see 3.3.7 *Setting the files to be copied at installation*.

**Execute "Executing Files"**

After installation of JP1/Software Distribution Client, the system automatically executes the specified program. Clear the check box if you do not have a program to be executed on the client machine. For details about how to set the program to be executed automatically, see 3.3.8 *Setting the programs to be executed after installation*.

### 3.3.10 Setting the network to be used

When you store an installation set on a file server in the network, you need to specify about mapping of the network drive and the transfer of the installation set. You can make these settings in the **Network Sharing** page. Note that the system only displays this page when you select **For file server** in the Installation Set Type dialog box.

#### (1) Network Sharing page

Figure 3-15 shows the **Network Sharing** page.

Figure 3–15: Network Sharing page

#### (2) Components of the Network Sharing page

The components of the **Network Sharing** page are as follows.

##### (a) Map a new network drive for the file server check box

Use this check box to specify whether to map a new network drive for the file server or to use a network drive that is already mapped in each client machine. When you select this check box, the system maps a new network drive for the file server. When you do not select this check box, the system uses an existing network drive. This check box is selected (map a new network drive for the file server) by default.

When a non-Administrator user uses an installation set for a file server for installation, select this check box. Non-Administrator users cannot use an installation set using the existing network drive.

##### Note

When you execute an installation set with the **Map a new network drive for the file server** check box selected, the mapped network drive will not be disconnected until you restart the system. To prevent inadvertent deletion of installation sets by end users, we recommend that you set the read-only attribute for the directory for storing installation sets in the file server.

## (b) Network drive combo box

Specify the network drive to be mapped for the file server. You must specify a network drive in this box. You can select `FREE` or a letter between `A` and `Z` in this box. `FREE` indicates the first drive that is free. By default, `FREE` is selected when the **Map a new network drive for the file server** check box is selected and `Z` is selected when the **Map a new network drive for the file server** check box is not selected. You cannot select `FREE` if the **Map a new network drive for the file server** check box is not selected.

## (c) Server name text box

Specify the server name of the file server. You must specify a server name when the **Map a new network drive for the file server** check box or the **Transfer the created installation set to the file server** check box is selected. No server name is specified by default. You cannot specify a server name when neither the **Map a new network drive for the file server** check box nor the **Transfer the created installation set to the file server** check box is selected.

## (d) Shared directory name text box

Specify the shared directory of the file server. This setting is required. (You need to specify the shared directory even if the **Map a new network drive for the file server** check box is not selected.)

If you want to store an installation set in a directory under the shared directory, use `\` as a delimiter. If the specified directory does not exist, the specified directory is automatically created in the shared directory when the installation set is transferred.

Specification examples are as follows:

- Transferring an installation set to the `DM_INST` shared directory  
`DM_INST`
- Transferring an installation set to the `Sub01` directory in the `DM_INST` shared directory  
`DM_INST\Sub01`

## (e) User name text box

Specify the name of the user who maps the network drive. You cannot specify a user name in this text box when the **Map a new network drive for the file server** check box is not selected. You can specify a user name in this text box when the **Map a new network drive for the file server** check box is selected. However, you do not need to specify anything if unnecessary. No user name is specified by default.

## (f) Password text box

Specify the password of the user who maps the network drive.

## (g) Domain text box

Specify the domain that the user who maps the network drive belongs to.

## (h) Transfer the created installation set to the file server check box

Use this check box to specify whether to transfer an installation set to the file server after the installation set is created. If you select this check box, the created installation set is transferred to the file server. This check box is not selected by default.

## (i) User name text box

Specify the name of the user who has the transfer account for the file server. You must specify a user name in this text box when the **Transfer the created installation set to the file server** check box is selected. You cannot specify a user name if the **Transfer the created installation set to the file server** check box is not selected.

## (j) Password text box

Specify the password of the user who has the transfer account for the file server.

## (k) Domain text box

Specify the domain that the user who has the transfer account for the file server belongs to.

### 3.3.11 Setting the FTP server to be used

When you store an installation set on an FTP server in the network, you need to specify the information about the FTP server and the transfer of the installation set. You can make these settings in the **FTP** page. Note that the system only displays this page when you select **For FTP server** in the Installation Set Type dialog box.

#### (1) FTP page

Figure 3-16 shows the FTP page.

Figure 3-16: FTP page

#### (2) Components of the FTP page

The components of the **FTP** page are as follows.

##### (a) FTP server name text box

Specify the server name of the FTP server. This setting is required. No FTP server name is specified by default.

##### (b) Directory name text box

Specify the name of the directory where you store the installation set. You can specify no more than 255 characters. This setting is required. No directory name is specified by default.

If the specified directory does not exist, the specified directory is automatically created when the installation set is transferred. If you want to store the installation set in a directory in a hierarchy, delimit directories using \.

##### Note

You need to delimit directories using \ when you use a non-Windows FTP server as well.



Specification examples are as follows:

- Transferring an installation set to the DM\_INST directory  
DM\_INST
- Transferring an installation set to the Sub01 directory in the DM\_INST directory  
DM\_INST\Sub01

(c) User name text box

Specify the name of the user who has the download account for the FTP server. This setting is required. No user name is specified by default.

(d) Password text box

Specify the password of the user who has the download account for the FTP server. This setting is required. No password is specified by default.

(e) Transfer the created installation set to the FTP server check box

Use this check box to specify whether to transfer an installation set to the FTP server after you create the installation set. When you select this check box, the system transfers the installation set to the FTP server. This check box is not selected by default.

(f) User name text box

Specify the name of the user who has the transfer account for the FTP server. This setting is required when the **Transfer the created installation set to the FTP server** check box is selected. You cannot specify a user name when the **Transfer the created installation set to the FTP server** check box is not selected.

(g) Password text box

Specify the password of the user who has the transfer account for the FTP server.

### 3.3.12 Creating setup information

On the **Settings for Installation and Setup** page, click the **Setup** button. The Startup Kit - Settings for Installation and Setup Information dialog box appears. Use this dialog box to specify the installation components and setup information for JP1/Software Distribution Client.

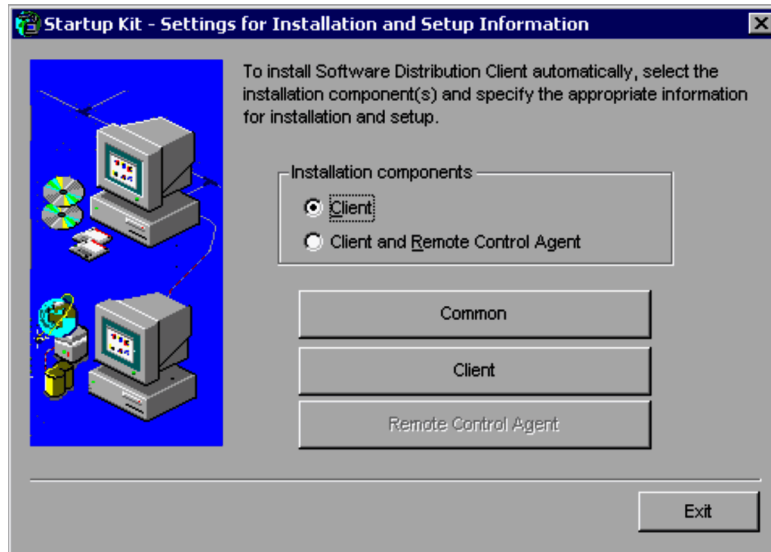
This subsection describes how to create setup information.

#### (1) Setup information creation procedure

To create the setup information:

1. In the Create or Edit Installation Set dialog box, on the **Settings for Installation and Setup** page, click the **Setup** button.  
The Startup Kit - Settings for Installation and Setup Information dialog box appears. You use this dialog box to create the setup information.

Figure 3–17: Startup Kit - Settings for Installation and Setup Information dialog box



2. From **Installation components**, select the components you wish to install.  
Select either **Client** to install Client only or **Client and Remote Control Agent** to install both Client and Remote Control Agent.
3. Click the **Common** button, and specify the setup information common to Client and Remote Control Agent.  
Specify information such as the installation directory. For details about the specification, see (2) *Creating common setup information* below in this section. When you finish specifying the common information, the Startup Kit - Settings for Installation and Setup Information dialog box is displayed again.
4. Click the **Client** or **Remote Control Agent** button to create setup information.  
Create the setup information for each component. For details, see (3) *Creating client setup information* and (4) *Creating Remote Control Agent setup information* below in this section.  
When you finish creating the setup information, the Startup Kit - Settings for Installation and Setup Information dialog box is displayed again.
5. When you finish creating all necessary setup information, click the **Exit** button.  
Creation of setup information has been completed.

## (2) Creating common setup information

To create the common setup information:

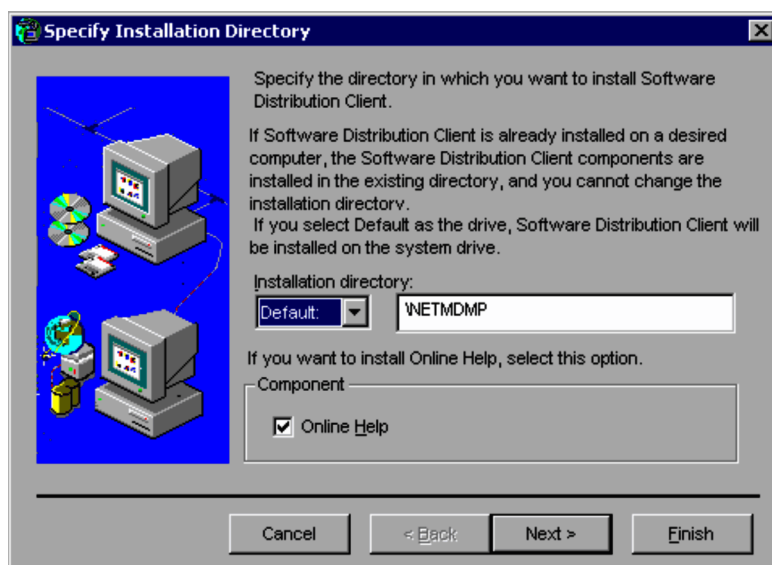
1. Specify the installation directory.
2. Specify the program folder.

This section explains each setting.

### (a) Specifying the installation directory

In the Startup Kit - Settings for Installation and Setup Information dialog box, choosing **Common** displays the Specify Installation Directory dialog box. In this dialog box, specify the Client installation directory and whether or not online Help is to be installed.

Figure 3–18: Specify Installation Directory dialog box

**Installation directory**

Specify the JP1/Software Distribution Client installation directory, using alphanumeric characters, spaces, and the following special characters:

\_ \ . : ( )

If you select **Default:** for the drive, the system drive is assumed.

**Component**

Select whether or not you wish to install online Help.

- Notes on performing overwrite installation

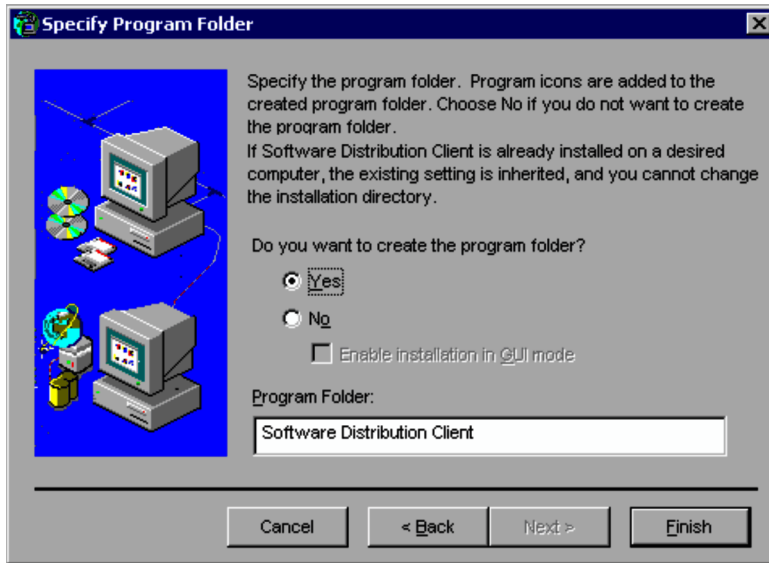
If JP1/Software Distribution Client has already been installed on a PC subject to automatic installation, JP1/Software Distribution Client will be installed in the existing installation directory; you cannot change it.

Click the **Next** button to display the Specify Program Folder dialog box.

**(b) Specifying the program folder**

In the Specify Program Folder dialog box, specify the program folder to which the JP1/Software Distribution Client icon is to be added.

Figure 3–19: Specify Program Folder dialog box



### Program Folder

Specify whether or not a program folder to which the JP1/Software Distribution Client icon will be added is to be created. If you create a program folder, specify a name for it. Note that you cannot specify a program folder name that includes a backslash (\).

If no program folder is created, you will not be able to perform installation in the GUI installation mode as the default. To execute GUI-mode installation without creating a program folder, you have to select **Enable installation in GUI mode**. When this option is selected, the GUI installation mode becomes available.

If you select **Enable installation in GUI mode**, you can create a `Software Distribution Client Setup` folder without having to create a program folder. To create a `Software Distribution Client Setup` folder, select the **Create Software Distribution Client Startup folder** option on the **Startup** page when you specify detailed client information.

- Notes on performing overwrite installation

If JP1/Software Distribution Client has already been installed on a PC subject to automatic installation, JP1/Software Distribution Client will be installed in the existing program folder; you cannot change it. You cannot create a new program folder even if there is no existing program folder.

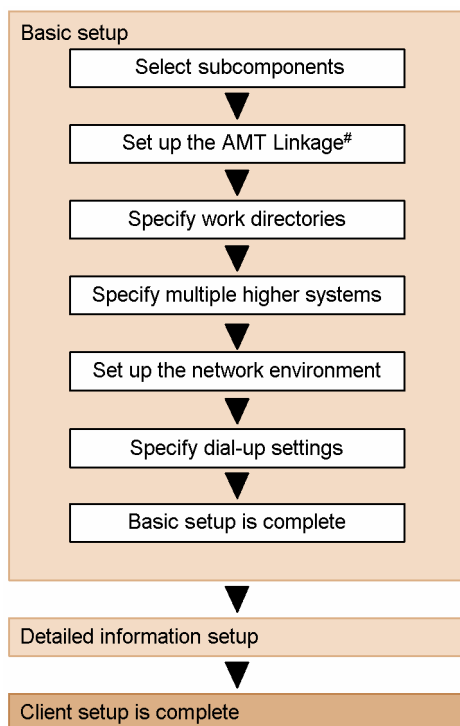
Click the **Finish** button to complete creation of the common setup information and to display the Startup Kit - Settings for Installation and Setup Information dialog box.

### (3) Creating client setup information

To create client setup information, choose **Client** in the Startup Kit - Settings for Installation and Setup Information dialog box. The two types of information that can be specified are basic setup information and detailed setup information. The basic setup information is required. You do not need to specify the detailed setup information unless default values need to be changed. After specifying the basic setup information, choose whether to finish creation of client setup information or to proceed to the detailed setup information.

Figure 3-20 shows the procedure for creating client setup information.

Figure 3–20: Creation of client setup information



#

In 08-00 and earlier versions, you cannot create an installation set that installs the AMT Linkage. If you want to use the AMT Linkage, create an installation set with 08-10 or later.

The detailed setup information is approximately the same as the JP1/Software Distribution Client setup information. For details about the detailed information items, see the description about setting up JP1/Software Distribution Client in either of the following manuals appropriate for the version of your JP1/Software Distribution Client: *Job Management Partner 1/Software Distribution Setup Guide*, for Windows systems, or *Job Management Partner 1/Software Distribution Description and System Setup*.

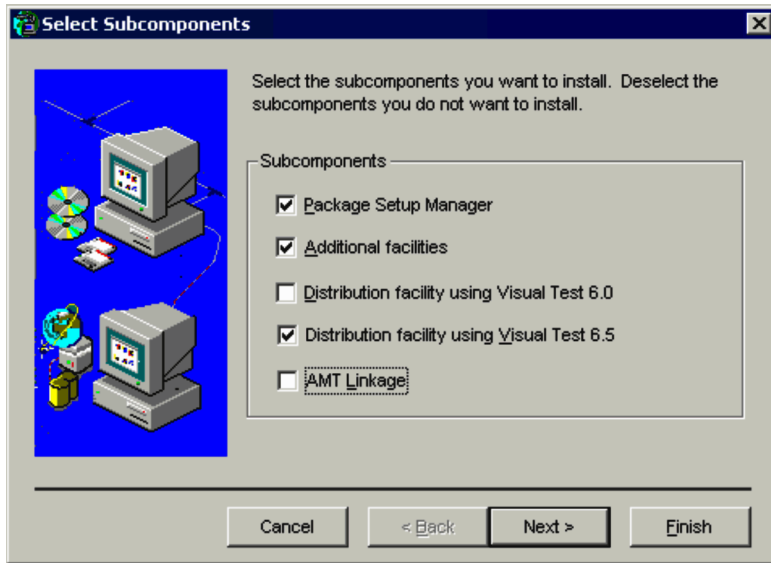
The following describes the creation of basic setup information.

#### (a) Selecting subcomponents

In the Select Subcomponents dialog box, select the subcomponents to be installed.

Note that in Windows 8, Windows Server 2012, Windows 7, Windows Server 2008 and Windows Vista, if you select **Distribution facility using Visual Test 6.0** or **Distribution facility using Visual Test 6.5**, subcomponents will not be installed. In 08-00 and earlier, you cannot select **AMT Linkage**.

Figure 3–21: Select Subcomponents dialog box



- Notes on performing overwrite installation

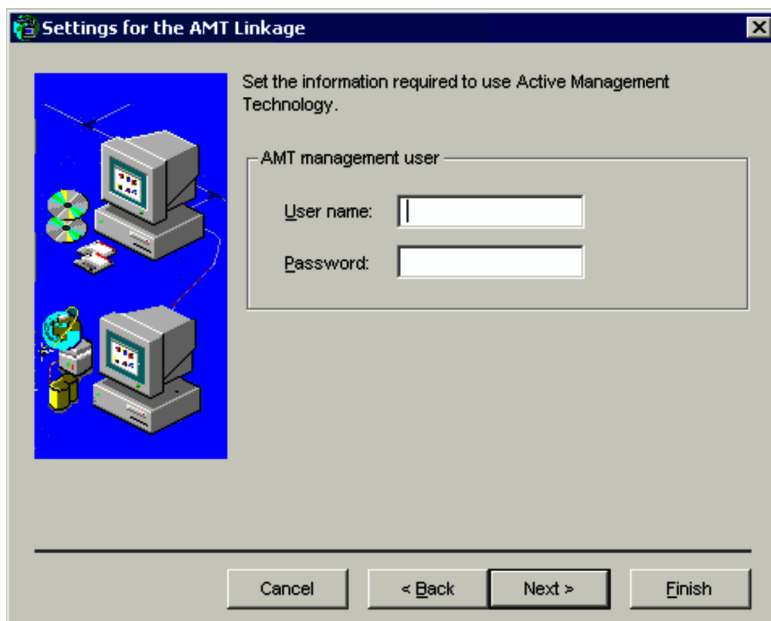
A subcomponent to be overwritten is handled as follows:

- When the selected subcomponent has already been installed, the existing subcomponent is overwritten. If the selected subcomponent has not been installed yet, it is installed as a new subcomponent.
- If subcomponents that are not selected have already been installed, subcomponents 07-00 or later are uninstalled. Subcomponents 06-71 or earlier remain unchanged.
- If an upgrade from 05-12 or earlier is performed with the check boxes for **Package Setup Manager** and **Additional facilities** cleared, these subcomponents remain unchanged.

(b) Setting up the AMT Linkage

In the Settings for the AMT Linkage dialog box, set the information required to use AMT Linkage.

Figure 3–22: Settings for the AMT Linkage dialog box



**AMT management user**

In this group, set the information for accessing AMT on the client. The user name and password you specify in this group must be identical to those settings on the managing server.

**User name**

Specify the user name for accessing AMT on the client. You can use a maximum of 60 characters to specify the user name.

**Password**

Specify the password for accessing AMT on the client. You can use a maximum of 60 characters to specify the password.

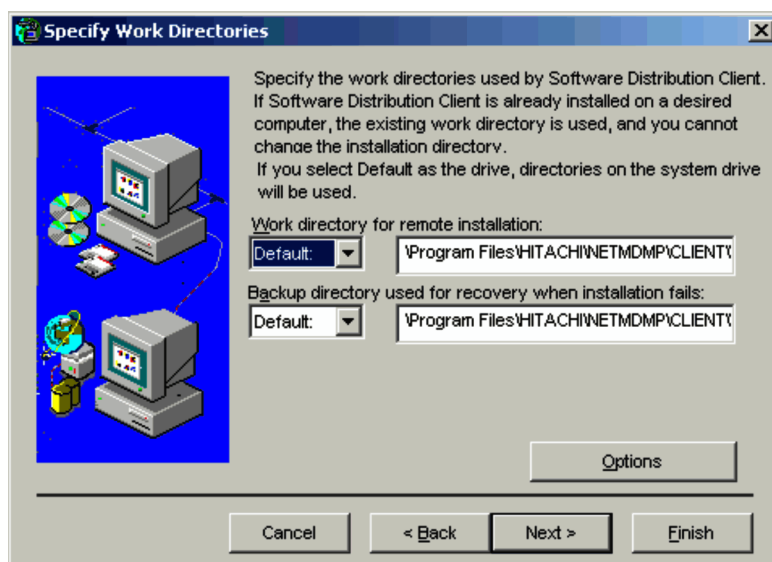
**(c) Specifying work directories**

In the Specify Work Directories dialog box, specify the directories to be used for processing by the client, using alphanumeric characters, spaces, and the following special characters:

\_ \ . : ( )

If you select **Default:** for the drive, the system drive is assumed.

Figure 3–23: Specify Work Directories dialog box



- Notes on performing overwrite installation

If JP1/Software Distribution Client has already been installed in a PC that is subject to automatic installation, the existing directories are used; you cannot change the directories.

**Work directory for remote installation**

Specify the directory to be used by the client for installing packages.

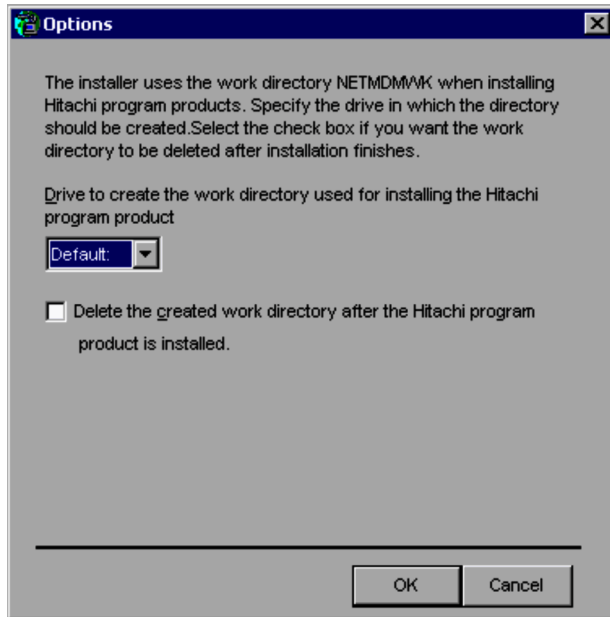
**Backup directory used for recovery when installation fails**

Specify the directory in which a backup is to be saved for when remote installation fails.

**Options**

Displays the Options dialog box that enables you to change the drive of the work directory for installing Hitachi program products (NETMDMWK directory). However, for overwrite installation, you cannot change the drive on which the directory is created.

Figure 3–24: Options dialog box



Under **Drive to create the work directory used for installing the Hitachi program product**, select the drive in which the directory is to be created. Do not specify the network drive. If the network drive is specified, operations cannot be guaranteed.

You can choose whether to delete the directory after a Hitachi program product has been installed. To delete the directory, choose **Delete the created work directory after the Hitachi program product is installed**. You should note the following precautions about choosing this option:

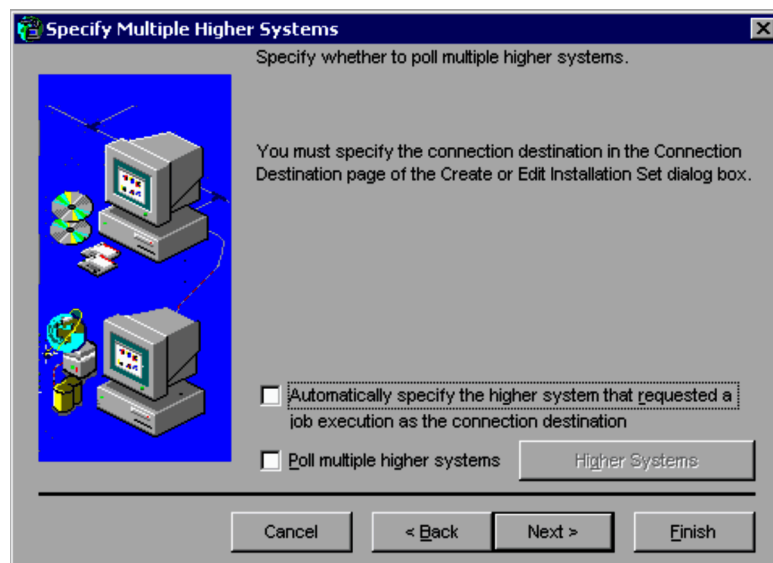
- In Windows NT, you must have the appropriate permissions to read, write, and delete the created drive in order to select the **Delete the created work directory after the Hitachi program product is installed** check box. If these permissions have not been granted, installation of a Hitachi program product will fail.
- Even though **Delete the created work directory after the Hitachi program product is installed** has been selected, the NETMDMWK directory may remain after installation. In such a case, the directory will be deleted when the PC is restarted or during polling.

(d) Specifying multiple higher systems

In the Specify Multiple Higher Systems dialog box, specify information about polling multiple higher systems and automatic selection of connection destination by transmission of execution requests.



Figure 3–25: Specify Multiple Higher Systems dialog box



#### Automatically specify the higher system that requested a job execution as the connection destination

Select this option for automatic specification of the higher system that issues a job execution request as the connection destination. When this check box is selected, if a job execution request is received from a system other than the higher system specified as the connection destination, the system automatically sets the connection destination of the client to the higher system that issued the job execution request.

This setting changes automatically the connection destination of the client on the basis of the higher system that requests job execution without having to re-create the client setup information or create an information file of higher connection destinations.

When this option is selected, you cannot use either of the following options:

- **Poll multiple higher systems** option.
- **Specify when installing Software Distribution Client** option on the **Connection Destination** page of the Create or Edit Installation Set dialog box

#### Poll multiple higher systems

Select this option to poll specific higher systems in addition to the higher system specified on the **Connection Destination** page of the Create or Edit Installation Set dialog box. When you select the **Poll multiple higher systems** option, you must click the **Higher Systems** button to specify the desired higher systems. You can specify a maximum of eight higher systems, including that specified on the **Connection Destination** page. Additionally, when you specify detailed information, specify the polling format for these higher systems from the **Default Running Status/Polling** page of the Detailed Information Setup dialog box.

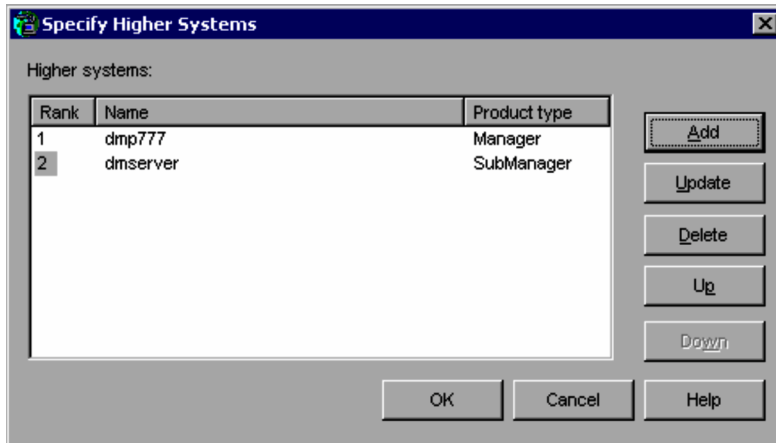
#### Higher Systems button

This button is enabled when **Poll multiple higher systems** is selected. Clicking this button displays the Specify Higher Systems dialog box. For details about the Specify Higher Systems dialog box, see (e) *Specifying higher systems* below.

#### (e) Specifying higher systems

If you are polling multiple higher systems, use the Specify Higher Systems dialog box to specify the product type, host name (or IP address), and polling priority of each higher system.

Figure 3–26: Specify Higher Systems dialog box

**Add button**

Adds a higher systems as a connection destination. You can specify a maximum of eight higher systems. In the Add/Change Higher System dialog box, specify the product type and host name or IP address of the higher systems you wish to add.

**Update button**

Updates information about a selected higher system. Clicking this button displays the Add/Change Higher System dialog box. Specify the product type and host name or IP address of the higher system in the dialog box.

**Delete button**

Deletes the selected higher system from the list.

**Up button**

Moves the priority of the selected higher system up one level.

**Down button**

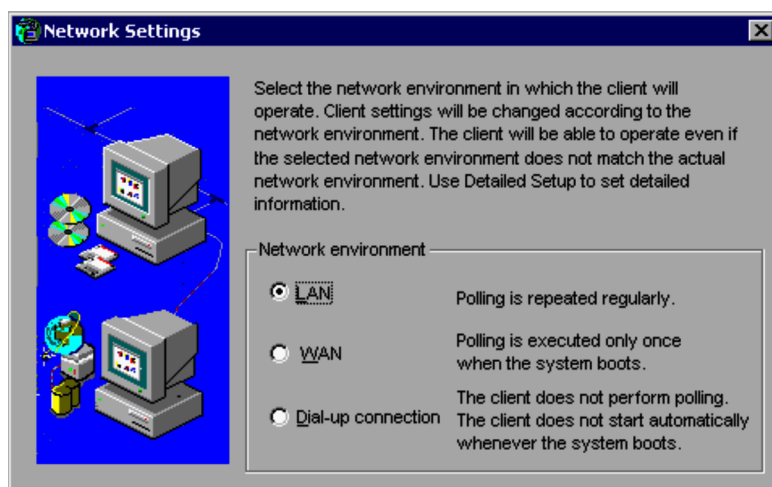
Moves the priority of the selected higher system down one level.

Note that you can specify a higher system that does not have the highest priority. The higher system with the highest priority is determined according to the setting on the **Connection Destination** page in the Create or Edit Installation Set dialog box. A hyphen (-) is always displayed in the **Name** and **Product type** columns of the higher system with the highest priority.

**(f) Specifying the network environment**

In the Network Settings dialog box, select **LAN**, **WAN**, or **Dial-up connection** as the network environment in which the client will run. The default is **LAN**. The settings in this dialog box are the same as in the Network Settings dialog box during JP1/Software Distribution Client installation.

Figure 3–27: Network Settings dialog box



Select the network environment in which the client will run. The polling-related default values in the Detailed Information Setup dialog box that is displayed during creation of detailed information will be optimized on the basis of the selected network environment.

If you select **LAN**, polling is executed at a set interval; the default is **Every 30 minutes**. If you select **WAN**, polling is executed only once when the system starts. If you select **Dial-up connection**, polling is not performed.

To change the default values, use the Detailed Information Setup dialog box.

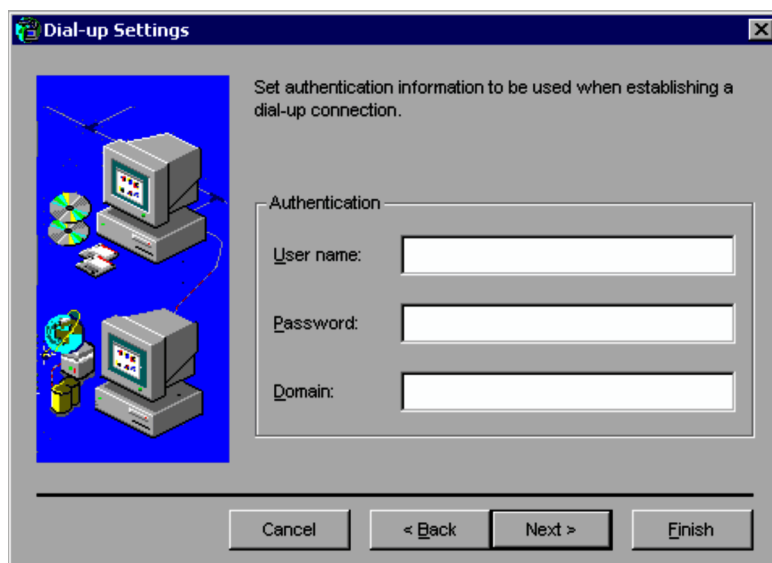
If you did not select **Dial-up connection** as the network environment, clicking the **Next** button displays the Basic Setup Completed dialog box.

If you selected **Dial-up connection** as the network environment, clicking the **Next** button displays the Dial-up Settings dialog box.

#### (g) Dial-up Settings

You specify in the Dial-up Settings dialog box the user name, password, and domain required in order to use dial-up connection. These settings are the same as in the Dial-up Settings dialog box during JP1/Software Distribution Client installation.

Figure 3–28: Dial-up Settings dialog box

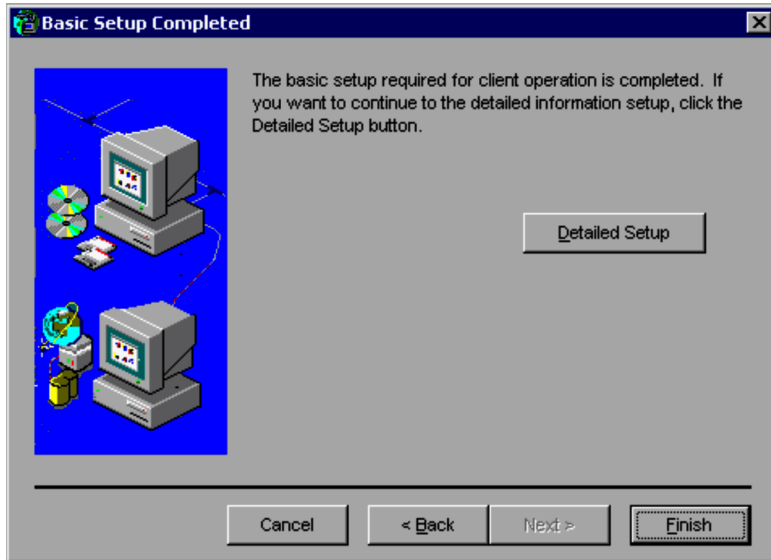


Click the **Next** button to display the Basic Setup Completed dialog box.

(h) Basic Setup Completed

When you are done specifying basic settings, the Basic Setup Completed dialog box is displayed. Select whether you wish to specify detailed information or you are done specifying client setup information.

Figure 3–29: Basic Setup Completed dialog box



Clicking the **Detailed Setup** button displays the Detailed Information Setup dialog box so that you can specify the detailed setup information. Most of the items displayed in this dialog box are the same as the setup items for JP1/ Software Distribution Client. Note that the **Connection Destination** and **Dial-up** pages are not displayed in this dialog box.

In addition, in Windows 8, Windows Server 2012, Windows 7, Windows Server 2008 and Windows Vista, the following detailed information items will be ignored if they are specified:

- **Role** page
- **Client starts automatically at system boot** check box on the **Default Running Status/Polling** page

For details about the detailed information items, see the description about setting up JP1/Software Distribution Client in either of the following manuals appropriate for the version of your JP1/Software Distribution Client: *Job Management Partner 1/Software Distribution Setup Guide*, for Windows systems, or *Job Management Partner 1/ Software Distribution Description and System Setup*.

(4) Creating Remote Control Agent setup information

To create Remote Control Agent setup information, choose **Remote Control Agent** in the Startup Kit - Settings for Installation and Setup Information dialog box.

Choosing **Remote Control Agent** displays the Remote Control Agent Setup dialog box. In this dialog box, specify the following information by clicking the **Next** button:

1. Subcomponent selection
2. Options related to startup
3. Options related to connection
4. Permitted controller information
5. Authentication information
6. Log information
7. File transfer information
8. Memory to be used
9. Setup password

In the authentication information settings, if you have set only users for which the Windows authentication function was specified as the permitted users, do not apply these settings to the Windows Me or Windows 98 operating systems. If applied, a connection request from any user will be rejected. For details about how to set the authentication information for Remote Control Agent, see the manual *Job Management Partner 1/Remote Control Description and Operator's Guide*.

When you finish specifying the information, click the **Finish** button to end setup information creation.

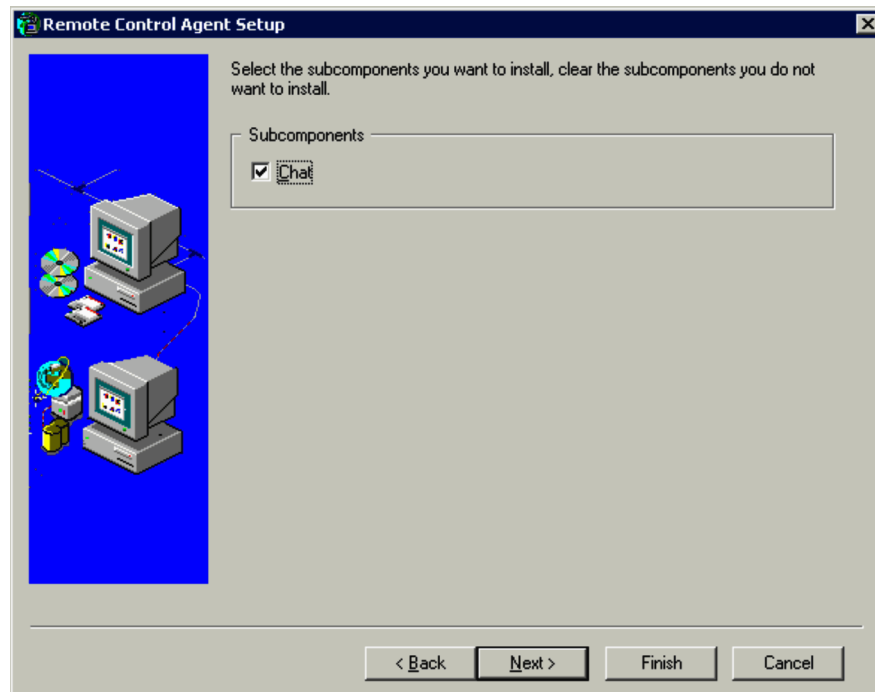
For all the information except whether to inherit the original settings and the subcomponent selection, the settings are the same as for the operating environment of Remote Control Agent. For details, see the manual *Job Management Partner 1/Remote Control Description and Operator's Guide*.

The following explains the subcomponent selection:

(a) Subcomponent selection

In the dialog box shown below, select the subcomponent that is to be installed. If you selected **Remote Control Agent** in the Startup Kit - Settings for Installation and Setup Information dialog box, this is the first dialog box that is displayed.

Figure 3–30: Remote Control Agent Setup dialog box



You can select **Chat**. By default, this subcomponent is selected.

Click the **Next** button to continue with creation of Remote Control Agent setup information.



# 4

## Installing JP1/Software Distribution Client Using an Installation Set

To install JP1/Software Distribution Client using JP1/Software Distribution Administrator Kit, end users execute Client Tool on each client machine to install JP1/Software Distribution Client. This chapter describes how to use Client Tool to install JP1/Software Distribution Client.

## 4.1 Preparation for using Client Tool

---

This section describes the steps required before you use Client Tool. Check the following points before you install JP1/Software Distribution Client on your client machine using Client Tool.

- Check whether JP1/Software Distribution Manager (relay manager), JP1/Software Distribution Client (relay system), and JP1/Software Distribution SubManager 07-50 or earlier are not installed on the client machine.  
If the following products are installed on the client machine, you cannot install JP1/Software Distribution Client:

- JP1/Software Distribution Manager (relay manager)
- JP1/Software Distribution Client (relay system)
- JP1/Software Distribution SubManager (version 07-50 or earlier)

- Check that the account permission is correct when the operating system of the client machine is Windows Server 2003 or Windows XP.

When you make the settings on the **Administrator Permissions** page when creating an installation set and you log on as a non-Administrator user and execute Client Tool, the account information of Administrator on the client machine must match the account information that is set in the **Administrator Permissions** page. Otherwise, you cannot install JP1/Software Distribution Client. If this is the case, you must log on again using the account with the Administrator permissions, not as a non-Administrator user.

- Check whether JP1/Remote Control Agent is installed in the client machine.  
If JP1/Remote Control Agent is already installed, you cannot install Remote Control Agent even if you set the installation set to install Remote Control Agent as an installation component when you create the installation set.
- Check whether the installation destinations for JP1/Software Distribution Client contain a Windows 95 client machine.

JP1/Software Distribution Client 07-00 or later cannot be installed on a Windows 95 client machine. Therefore, you need to create the following two types of installation sets in advance:

- Installation set for JP1/Software Distribution Client 07-00 or later  
This installation set is required to install JP1/Software Distribution Client on a client machine whose operating system is other than Windows 95.
- Installation set for JP1/Software Distribution Client 06-53 or 06-71  
This installation set is required to install JP1/Software Distribution Client on a Windows 95 client machine.

To use these installation sets to install JP1/Software Distribution Client with ease, you need to create and execute a batch file.

- Check whether the combination of the OS on the machine on which the installation sets were created and the OS on the client machine is correct.

Install the installation sets for Windows 8, Windows Server 2012, Windows 7, Windows Server 2008, and Windows Vista Edition JP1/Software Distribution Client on client machines that run Windows 8, Windows Server 2012, Windows 7, Windows Server 2008, or Windows Vista.

### 4.1.1 Preparation required before using an installation set for an FTP server

To use an installation set for an FTP server, the system administrator first needs to make settings to allow storing Client Tool in each client machine in some manner (by allowing download of Client Tool from the Web or distributing Client Tool via email to the end users who use client machines). Client Tool consists of `dminst.exe` (executable file), `dminst.sci` (installation script file), and `dminst.exe.manifest` (manifest file), which are created in an installation set for an FTP server.



## 4.2 Executing Client Tool

---

You (in this case, an end user or system administrator) execute Client Tool in each client machine to install JP1/Software Distribution Client. The execution method of Client Tool differs depending on the type of installation set that is created.

This section describes the execution method for each type of installation set (for a CD-ROM, for a file server, and for an FTP server), the return codes that appear during execution, and cautions that apply during execution.

### 4.2.1 When using an installation set for a CD-ROM

When you use an installation set for a CD-ROM, perform the following procedure.

To execute Client Tool in an installation set for a CD-ROM:

1. Insert the CD-ROM containing the installation set into the drive.
2. Execute `dminst.exe` in the installation set.

When you execute `dminst.exe`, the installation of JP1/Software Distribution Client begins. Note that the Specify Connection Destination dialog box is displayed during installation only when you select **Specify when installing Software Distribution Client** in the **Connection Destination** page in creating the installation set. When this dialog box is displayed, determine the higher connection destination according to the instructions in the dialog box. When the installation of JP1/Software Distribution Client is completed, a completion dialog box is displayed and it disappears automatically after a while.

### 4.2.2 When using an installation set for a file server

When you use an installation set for a file server, perform the following procedure.

To execute Client Tool in an installation set for a file server:

1. Find the directory containing the installation set in the shared directory of the file server.
2. Execute `dminst.exe` in the directory containing the installation set.

If you want to copy Client Tool to the client machine, copy both `dminst.exe` and `dminst.sci` in the same directory. When the client machine OS is Windows 8, Windows Server 2012, Windows 7, Windows Server 2008 or Windows Vista, also copy `dminst.exe.manifest` into the same directory.

When you execute `dminst.exe`, the installation of JP1/Software Distribution Client begins. Note that the Specify Connection Destination dialog box is displayed during installation only when you select **Specify when installing Software Distribution Client** in the **Connection Destination** page in creating the installation set. When this dialog box is displayed, determine the higher connection destination according to the instructions in the dialog box. When the installation of JP1/Software Distribution Client is completed, a completion dialog box is displayed and it disappears automatically after a while.

*Note*

- When you create an installation set with the setting to map a new network drive and you execute Client Tool in that installation set, the mapped network drive might not be disconnected even after JP1/Software Distribution Client is installed. We recommend that you set the read-only attribute for the installation set storage directory in the file server to prevent end users from deleting the installation set by mistake. The mapped network drive is not reconnected after the system is restarted.
- When you specify the account settings necessary for installation on the **Administrator Permissions** page, specify the same user name and password that are used for **Account for mapping the network drive** on the **Network Sharing** page. If you do not use these values, an error occurs in user authentication, and the installation will fail.

### 4.2.3 When using an installation set for an FTP server

To use an installation set for an FTP server, perform the following procedure.

To execute Client Tool in an installation set for an FTP server:

1. Store `dminst.exe` and `dminst.sci` in the client machine.

Store `dminst.exe` and `dminst.sci` that are distributed via the Web or email in the client machine. You can store `dminst.exe` and `dminst.sci` in any directory. However, they must be stored in the same directory. When the client machine OS is Windows 8, Windows Server 2012, Windows 7, Windows Server 2008 or Windows Vista, also store `dminst.exe.manifest` in the same directory.

2. Execute `dminst.exe`.

When you execute `dminst.exe`, the installation of JP1/Software Distribution Client begins. Note that the Specify Connection Destination dialog box is displayed during installation only when you select **Specify when installing Software Distribution Client** in the **Connection Destination** page in creating the installation set. When this dialog box is displayed, determine the higher connection destination according to the instructions in the dialog box. When the installation of JP1/Software Distribution Client is completed, a completion dialog box is displayed and it disappears automatically after a while.

#### 4.2.4 Return codes displayed for Client Tool

The following describes the return codes displayed for `dminst.exe`.

Table 4–1: Return codes for `dminst.exe`

Code	Meaning	Action
0	Successful installation.	None.
1	<ul style="list-style-type: none"> <li>• Client Tool has been executed by a non-Administrator user.</li> <li>• <code>dminst.sci</code> was not found or is broken.</li> <li>• <code>dminst.exe.manifest</code> was not found.</li> </ul>	<ul style="list-style-type: none"> <li>• To execute Client Tool as a non-Administrator user, set an account with Administrator permissions in the <b>Administrator Permissions</b> page.</li> <li>• Make sure that <code>dminst.sci</code> has been stored correctly.</li> <li>• Make sure that <code>dminst.exe.manifest</code> has been stored correctly.</li> </ul>
2	An invalid value is set for the argument.	Check the value specified for the argument.
3	JP1/Software Distribution Client has already been installed.	<p>To perform overwrite installation, specify necessary information in the <b>Overwrite Installation</b> page in the Create or Edit Installation Set dialog box. For details about how to set overwrite installation, see <i>3.3.9 Setting overwrite installation</i>.</p> <p>If you do not want to perform overwrite installation, uninstall Remote Control Agent and then install it again.</p>

#### 4.2.5 Notes on executing Client Tool

The following are notes on executing Client Tool.

- When the client machine OS is Windows 8, Windows Server 2012, Windows 7, Windows Server 2008 or Windows Vista, only a member of the Administrators group can install a program. Therefore, the User Account Control dialog box appears before Client Tool starts. After program execution is permitted in this dialog box, Client Tool can start. If you choose **Cancel** in this dialog box, Client Tool does not start.
- In the following cases, restart the client machine after executing Client Tool:
  - When installing Remote Control Agent
  - When overwriting JP1/Software Distribution Client 08-00 and later versions
- If a new installation using Client Tool fails, restart the client machine and then re-execute the installation. For details about how to re-execute a new installation, see the *Job Management Partner 1/Software Distribution Setup Guide*, for Windows systems.

## 4.3 Executing Client Tool according to the type of operation

---

Client Tool consists of two files, the executable file and the installation script file. The system administrator distributes these two files to end users via email or the Web to allow the end users to install JP1/Software Distribution Client without being aware of the installation set located whether on the file server or FTP server. Since two files are required, however, the system administrator and the end users need to make some effort for distribution via email and download from the Web.

This section describes the methods that allow the end users to execute Client Tool efficiently. They are the distribution of compressed Client Tool and the use of a batch file for the logon script.

This section also describes the method of installing JP1/Software Distribution Client easily in an environment containing a Windows 95 client machine.

### 4.3.1 Distribution of compressed Client Tool

Client Tool consists of the following files:

- `dminst.exe`
- `dminst.sci`
- `dminst.exe.manifest`

The system administrator compresses the `dminst.exe`, `dminst.sci`, and `dminst.exe.manifest` files on the file server or the FTP server in advance as self-extracting files, and specifies the destination for the compressed files and the executable file (`dminst.exe`) that runs after decompression. By doing so, the system administrator can efficiently distribute Client Tool to end users.

The end users only need to download one file distributed by the system administrator and execute it to efficiently install JP1/Software Distribution Client.

### 4.3.2 Using a batch file for the logon script

JP1/Software Distribution Administrator Kit creates a sample batch file (`install.bat`) for the logon script when an installation set is created. By editing this batch file and registering it in the user profile, the user can install JP1/Software Distribution Client using the logon script.

However, the logon script is available only when the user uses installation set for a file server to install JP1/Software Distribution Client.

In Windows 8, Windows Server 2012, Windows 7, Windows Server 2008 or Windows Vista, because the User Account Control dialog box appears when Client Tool starts, automatic installation employing a batch script file for the logon script cannot be used.

The following explains how to edit the batch file for the logon script (`install.bat`).

*How to edit the batch file for the logon script (install.bat)*

Find the following description in the batch file. Replace *server-name* and *shared-directory-name* with the actual name of the server storing the installation set and the name of the directory storing the installation set.

```
if not exist JP1/Software-Distribution-Client-installation-destination-
directory\INSTRSLT Start /W \\server-name\shared-directory-name\dminst.exe \
\server-name\shared-directory-name\dminst.sci /createcheckfile
```

### 4.3.3 When the operating systems for installation destination client machines contain Windows 95

JP1/Software Distribution Client 07-00 or later cannot be installed on a Windows 95 client machine. Installing JP1/Software Distribution Client on a Windows 95 client machine requires an installation set for JP1/Software

#### 4. Installing JP1/Software Distribution Client Using an Installation Set

Distribution Client 06-53 or 06-71. Therefore, to install JP1/Software Distribution Client 07-00 or later, you need to create two types of installation sets. When using two types of installation sets, creating and executing a batch file allows you to install JP1/Software Distribution Client with ease.

The following describes how to create and execute a batch file.

##### (1) Creating a batch file

Create a batch file with the following contents. Assign a file name, such as DIR\_INST.BAT, to the batch file.

Figure 4-1 shows the data to be specified in the batch file.

Figure 4-1: Specification of the batch file

```
1. [ ver | find "Windows 95"
    [ if ERRORLEVEL 1 goto NOT_WINDOWS95

2. [ cd name of the directory for storing the installation set or
    [ dminst.exe and dminst.sci to be started when the operating
    [ system is Windows 95
    [ goto INST_DMP

3. [ :NOT_WINDOWS95
    [ cd name of the directory for storing the installation set or
    [ dminst.exe and dminst.sci to be started when the operating
    [ system is other than Windows 95

4. [ :INST_DMP
    [ Start dminst.exe dminst.sci
    [ cd ..
    [ exit
```

1. Specify the check to determine whether the operating system on the machine on which JP1/Software Distribution Client is to be installed is Windows 95.
2. Specify the name of the directory<sup>#</sup> for storing the installation set or `dminst.exe` and `dminst.sci` to be started when the operating system is Windows 95.  
Specify the name of the directory, for example, `06-71_CD` for storing the installation set or `dminst.exe` and `dminst.sci`. The name must be identifiable as being created in the installation medium for JP1/Software Distribution Client 06-71 or earlier.  
For an installation set for a CD-ROM, specify the name of the directory containing the installation set. For an installation set for a file server or FTP server, specify the name of the directory containing `dminst.exe` and `dminst.sci` copied from the installation set.
3. Specify the name of the directory<sup>#</sup> for storing the installation set or `dminst.exe` and `dminst.sci` to be started when the operating system is other than Windows 95.  
Specify the name of the directory, for example, `07-00_CD` for storing the installation set or `dminst.exe` and `dminst.sci`. The name must be identifiable as being created in the installation medium for JP1/Software Distribution Client 07-00 or later.  
For an installation set for a CD-ROM, specify the name of the directory containing the installation set. For an installation set for a file server or FTP server, specify the name of the directory containing the `dminst.exe`, `dminst.sci` and `dminst.exe.manifest` files copied from the installation sets.
4. Specify the execution of Client Tool.

#

For details about the location of the installation sets, see (2)(a) *When using an installation set for a CD-ROM*, or (2)(b) *When using an installation set for a file server or FTP server*.

## (2) Executing a batch file

The following describes how to execute a created batch file for each type of the installation set.

When executing the batch file, set the current directory to the directory containing the batch file.

### (a) When using an installation set for a CD-ROM

To execute a batch file:

#### 1. Create installation sets.

Create two types of installation sets as follows:

- Installation set for a CD-ROM available to machines whose operating system is Windows 95  
Use an installation medium for JP1/Software Distribution Client 06-53 or 06-71 to create the installation set.
- Installation set for a CD-ROM available to machines whose operating system is other than Windows 95  
Use an installation medium for JP1/Software Distribution Client 07-00 or later to create the installation set.

#### 2. Create a batch file.

For details about how to create a batch file, see (1) *Creating a batch file*.

#### 3. Edit `Autorun.inf`.

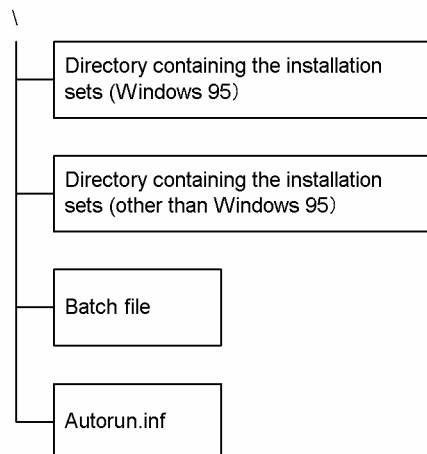
When an installation set is created, `Autorun.inf` is created in the installation set. Edit the created `Autorun.inf` by specifying the path to the batch file so that the batch file will be started.

#### 4. Copy the installation sets, the batch file, and `Autorun.inf` to the CD-ROM.

Store the two types of installation sets in separate directories. Specify the same directory names that you specified in the batch file.

Copy the batch file and `Autorun.inf` to directly under the CD-ROM. The following shows the directory structure.

Figure 4–2: Directory configuration (when using the installation set for CD-ROM)



5. Insert the CD-ROM into the machine where you want to install JP1/Software Distribution Client.  
The batch file starts and installation starts.

### (b) When using an installation set for a file server or FTP server

To execute a batch file:

#### 1. Create installation sets.

Create two types of installation sets as follows:

- Installation set for a file server or FTP server available to machines whose operating system is Windows 95  
Use an installation medium for JP1/Software Distribution Client 06-53 or 06-71 to create the installation set.
- Installation set for a file server or FTP server available to machines whose operating system is other than Windows 95

#### 4. Installing JP1/Software Distribution Client Using an Installation Set

Use an installation medium for JP1/Software Distribution Client 07-00 or later to create the installation set.

2. Create a batch file.

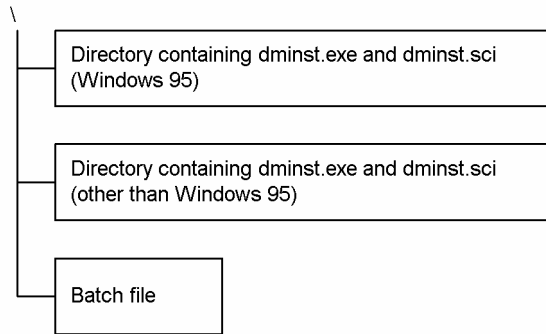
For details about how to create a batch file, see (1) *Creating a batch file*.

3. Store the necessary files from the installation sets and the batch file into the file server or FTP server.

From each installation set, copy the created `dminst.exe`, `dminst.sci`, and `dminst.exe.manifest`, and then store them in separate directories. Specify the same directory names that you specified in the batch file.

The following shows the directory structure.

Figure 4–3: Directory configuration (when using the installation set for the file server or the FTP server)



4. Execute the batch file.

Installation starts.

When the batch file is executed, the directories created in step 3 are copied to the machine where JP1/Software Distribution Client is to be installed.

When you are using installation sets for a file server, you can also execute the batch file stored in the file server from the machine where JP1/Software Distribution Client is to be installed.

# Appendixes

## A. Version Changes

### (1) Changes in version 09-50

- Windows 7 and Windows Server 2008 R2 have been added as applicable operating systems.

### (2) Changes in version 09-00

- The terms used in JP1/Software Distribution manuals have been made consistent.
- Notes have been added that apply if a new installation of JP1/Software Distribution Client that uses an installation set has failed.

### (3) Changes in version 08-51

- Windows Server 2008 has been added as an applicable operating system.
- The installation set can be created independently of the operating system of a machine on which the installation set is to be created.
- A description of the `dminst.exe.manifest` file contained in the installation set for Windows Server 2008 and Windows Vista has been added.

### (4) Changes in version 08-10

- JP1/Software Distribution Administrator Kit can now be used in Windows Vista.
- Information necessary for controlling a client by using AMT can now be set during creation of an installation set.

### (5) Changes in version 08-00

- Along with the change of the organization of products, descriptions have been added and changed.
- Memory requirements for Client Tool have been changed.

### (6) Changes in version 07-11

- The descriptions of the memory requirements and disk requirements for JP1/Software Distribution Administrator Kit have been changed.
- Overwrite installation of JP1/Software Distribution Client is now possible. Accordingly, the part that must be edited in the batch file has been changed.
- The user can now enable the settings of the job execution options for JP1/Software Distribution Manager by specifying a file listing the user information items for collection.
- By creating and executing a batch file, the user can now install JP1/Software Distribution Client 07-00 or later in an environment that contains a Windows 95 client machine.
- Return codes that are displayed during execution of Client Tool have been added.

### (7) Changes in version 07-00

- Windows Server 2003 has been added to the applicable operating systems. Windows NT 4.0 has been deleted from the applicable operating systems.
- The Integrated CD-ROM without a defined password has been added to the media that can be used for creating an installation set.
- Installation of JP1/Software Distribution Client is now possible even if the higher connection destination is not yet determined.



- The method of uninstalling JP1/Software Distribution Client has been changed. This method is applicable when uninstalling JP1/Software Distribution Client without using **Add/Remove Programs** is specified in the installation set.

---

## B. Glossary

### **Administrator Tool**

One of the Startup Kit tools. By using Administrator Tool, you can create an installation set for JP1/Software Distribution Client.

### **Client Tool**

One of the Startup Kit tools. By using Client Tool, you can install JP1/Software Distribution Client on the client machine used by an end user.

### **installation set**

A collection of files that are required to automatically install JP1/Software Distribution Client. There are the installation set for a CD-ROM, the installation set for a file server, and the installation set for an FTP server. You can create the desired type of installation set using Administrator Tool.

### **JP1/Software Distribution**

An integrated system that distributes software and centrally manages clients using a network.

### **Startup Kit**

A collection of tools provided by JP1/Software Distribution Administrator Kit to ease the installation and setup of JP1/Software Distribution Client. Startup Kit consists of Administrator Tool and Client Tool.

---

# Index

## Symbols

---

%NETMDMP% 36  
%SYSTEM% 36  
%WINDOWS% 36

## A

---

abbreviations for products II  
account  
    for transferring to file server 43  
    for transferring to FTP server 45  
    setting required for installation 26  
    with Administrator permissions 26  
acronyms IV  
Add/Remove Programs 33  
Administrator Permissions page 23, 26  
    components of 27  
Administrator Tool 3  
    concept to create installation set 5  
    defined 70  
    starting 18  
AMT Linkage  
    setting up 50  
Apply setup information of installation set 41  
argument  
    dialog box for specifying 38  
Automatic Specification of Connection Destinations dialog  
    box 30  
Autorun.inf 65

## B

---

Basic Setup Completed dialog box 56  
batch file for logon script  
    editing 63

## C

---

CD-ROM  
    installation set for 16  
characters  
    that can be used for installation set names 19  
client  
    setup information of, creating 48  
Client Tool 3, 60, 63  
    defined 70  
    distribution with compressing 63  
    executing 61  
    executing according to type of operation 63  
    preparation for using 60  
    when using installation set for CD-ROM 61  
    when using installation set for file server 61  
    when using installation set for FTP server 61  
components to be installed  
    setting 31  
compressing

    Client Tool for distribution 63  
concept of creating installation set 4  
concept of installing  
    JP1/Software Distribution Client using installation  
    set 6  
connection destination  
    automatic update 31  
connection destination of client  
    setting 27  
Connection Destination page 23, 27  
    components of 28  
conventions  
    abbreviations for products II  
    acronyms IV  
    diagrams IV  
    fonts and symbols V  
    KB, MB, GB and TB VI  
    version numbers VI  
copying  
    files to client machine 35  
    installation set 21  
Copying Files page 24, 35  
    components of 36  
CPU performance 10  
Create or Edit Installation Set dialog box 23  
    Administrator Permissions page 26  
    Connection Destination page 27  
    Copying Files page 35  
    Executing Files page 37  
    for specifying arguments 38  
    FTP page 44  
    Installation Medium page 24  
    Network Sharing page 42  
    Overwrite Installation page 40  
    setting items in each page 23  
    setting items in Network Sharing page and FTP  
    page 24  
    Settings for Installation and Setup page 31  
    User Information/Register in ID Group page 33  
creating  
    installation set 15, 19  
    setup information 45

## D

---

deleting  
    installation set 21  
Detailed Information Setup dialog box 56  
diagram conventions IV  
dialog box  
    Automatic Specification of Connection Destinations  
    30  
    Basic Setup Completed 56  
    Create or Edit Installation Set 23  
    Detailed Information Setup 56  
    for specifying installation set name (for copying  
    installation set) 21

- Installation Set Type 20
- Options 51
- Remote Control Agent Setup 56
- Startup Kit 18
- Startup Kit - Settings for Installation and Setup Information 46
- dial-up settings 55
- directories to be created after installing JP1/Software Distribution Administrator Kit 12
- directory for storing installation sets 42
- disk requirements 11
- dmhost.txt 29
- dminst.exe 63
- dminst.exe.manifest 63
- dminst.exe.manifest (manifest file) 60
- dminst.exe (executable file) 60
- dminst.sci 63
- dminst.sci (installation script file) 60

## E

---

- editing
  - installation set 20
- estimation for hardware 10
- executing Client Tool 62
- Executing Files page 24, 37
  - components of 38

## F

---

- file listing user information items for collection 34
- file server
  - installation set for 16
  - transfer account for 43
- files to be copied at installation
  - setting 35
- font conventions V
- FTP page 24, 44
  - components of 44
- FTP server
  - information 44
  - installation set for 16
  - transfer account for 45
- FTP server to be used
  - setting 44

## G

---

- GB meaning VI
- glossary 70

## H

---

- higher connection destination 27
  - setting automatically 27
- higher system
  - specifying 53

## I

---

- ID group 6, 33
- ID groups to be registered in

- setting 33
- information file for higher connection destinations 29
  - path 29
- information for higher connection destinations 29
- Inherit existing setup information 41
- install.bat (batch file for logon script) 63
- installation directory
  - specifying 46
- installation medium
  - setting directory of 24
- Installation Medium page 23, 24
  - components of 25
- installation procedure of JP1/Software Distribution Client using Startup Kit 3
- installation set 2
  - characters that can be used for names of 19
  - concept to create using Administrator Tool 5
  - copying 21
  - creating 15, 19
  - defined 70
  - deleting 21
  - determining type of 16
  - determining type to be created 17
  - editing 20
  - for CD-ROM 4, 16
  - for file server 4, 16
  - for FTP server 4, 16
  - preparations for creating 16
  - procedure for creating 18
  - restrictions for names 21
  - setting details 23
  - setting items 23
  - suited to operation type of distribution-destination
    - client machine 4
  - transferring 42, 44
  - types 4
- installation set for FTP server
  - preparation required before using 60
- installation set storage directory 61
- Installation Set Type dialog box 20
- installing
  - JP1/Software Distribution Administrator Kit and Startup Kit Support Tool component 12

## J

---

- JP1/Software Distribution
  - defined 70
- JP1/Software Distribution Administrator Kit
  - directories to be created after installation 12
  - features and facilities of 3
  - installing 12
  - notes on using 8
  - procedure for using 14
  - purpose of 2
- JP1/Software Distribution Client 13
  - higher connection destination of 27
  - installation destination directory of 32, 36
  - preparing installation medium of 16
  - procedure for installing 3

**K**

---

KB meaning VI

**M**

---

mapping

network drive 16, 42

MB meaning VI

memory requirements 10

multiple higher systems  
specifying 52**N**

---

network drive

mapping 16, 42

network environment

specifying 54

Network Sharing page 24, 42

components of 42

network to be used

setting 42

notes on using JP1/Software Distribution Administrator Kit  
8**O**

---

online Help 47

operating systems for installation destination client

machines contain Windows 95 63

Options dialog box 51, 52

Overwrite Installation page 24

components of 40

**P**

---

polling priority 53

program folder

specifying 47

programs to be automatically executed 37

programs to be executed after installation

setting 37

**R**

---

Remote Control Agent

creating setup information of 56

Remote Control Agent Setup dialog box 56

return code 62

for Client Tool 62

for dminst.exe 62

**S**

---

selecting

subcomponent 49, 57

self-extracting compression files 63

setting

account required for installation 26

components to be installed 31

connection destination of client 27

details about installation set 23

directory of installation medium 24

files to be copied at installation 35

FTP server to be used 44

ID groups to be registered in 33

items of installation set 23

network to be used 42

overwrite installation 39

programs to be executed after installation 37

user inventory items to be acquired 33

Settings for Installation and Setup page 24, 31

components of 32

setting up

AMT Linkage 50

setup information

common, creating 46

creating 45

specifying

higher system 53

installation directory 46

multiple higher systems 52

network environment 54

program folder 47

work directory 51

starting

Administrator Tool 18

Startup Kit 3

defined 70

Startup Kit dialog box 18

Startup Kit - Settings for Installation and Setup Information

dialog box 45, 46

Startup Kit Support Tool component 12

checking installation of 16

installing 12

version of 13

subcomponent

selecting 49, 57

symbol conventions V

system or system32 directory

in installation destination directory of Windows 36

**T**

---

TB meaning VI

transfer account for

file server 43

FTP server 45

transferring

installation set 42, 44

**U**

---

uninstalling

JP1/Software Distribution Administrator Kit and

Startup Kit Support Tool component 12

User Information/Register in ID Group page 24, 33

components of 34

user inventory item 6, 33

user inventory items to be acquired

setting 33

using

batch file for logon script 63

## V

---

version number conventions VI

## W

---

### Windows

    installation destination directory of 36  
work directory  
    specifying 51